



Grange End

Midsomer Norton, BA3 4XA

£580,000

Launched by our Midsomer Norton office!

Located within the popular Charlton Park area you will find a collection of large detached family homes within the cul-de-sac of Grange End. The property benefits from a large living space and great sized garden for expanding families.

- Sought after location
- Fantastic rear garden
- Spacious ground floor living
- Close to schools & amenities
- Ample off-street parking
- Double garage

Viewing

Please contact our Bath Stone Property (MSN) Office on 01761 360144

if you wish to arrange a viewing appointment for this property or require further information.



5



2

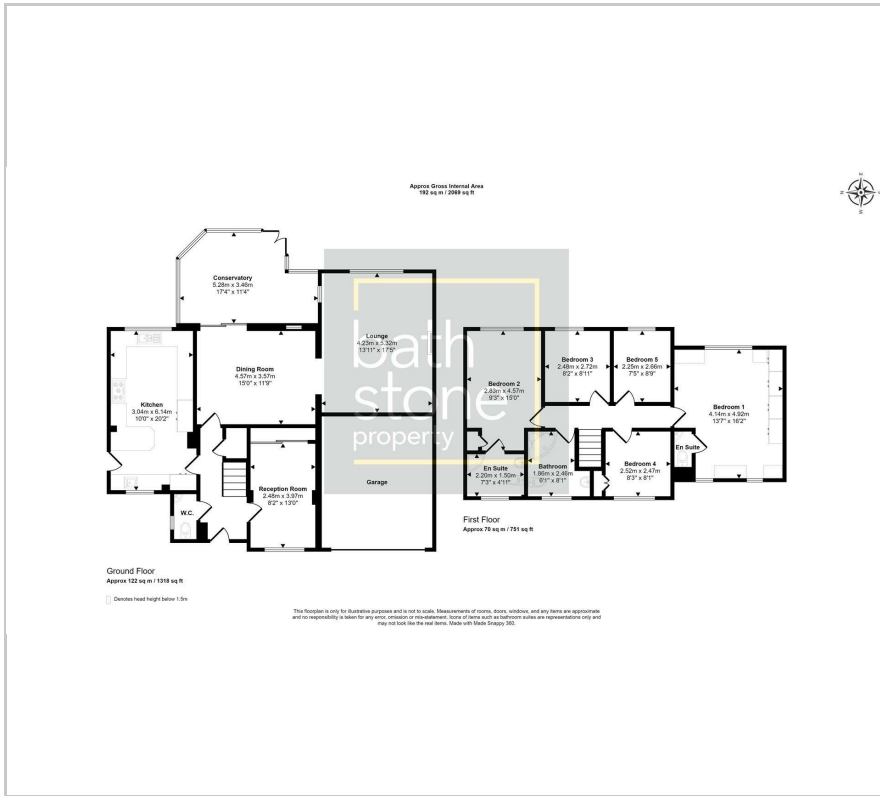


4



C

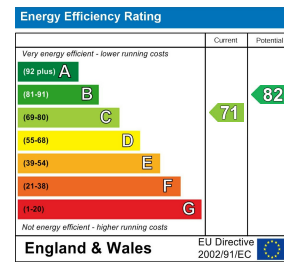
Floor Plan



Area Map



Energy Efficiency Graph



These particulars, whilst believed to be accurate are set out as a general outline only for guidance and do not constitute any part of an offer or contract. Intending purchasers should not rely on them as statements of representation of fact, but must satisfy themselves by inspection or otherwise as to their accuracy. No person in this firm's employment has the authority to make or give any representation or warranty in respect of the property.