



## Fir Tree Avenue

Paulton, BS39 7SQ

£379,950

Launched by our Midsomer Norton branch!

An extended three bedroom house, located on the edge of Paulton village. Offering a modern open plan layout and expansive garden, this property provides an ideal setting for family life and entertaining.

- Extended family home
- Impressive open planned living
- Large rear garden
- Workshop, garage and office
- Three double bedrooms
- Shower room and bathroom

### Viewing

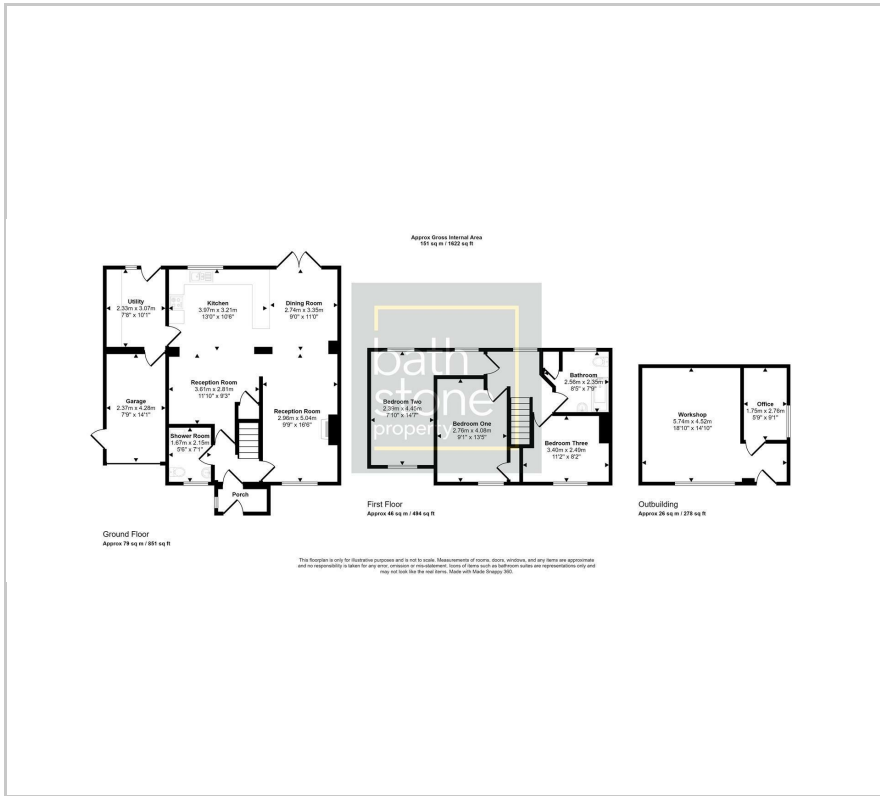
Please contact our Bath Stone Property (MSN) Office on 01761 360144

if you wish to arrange a viewing appointment for this property or require further information.





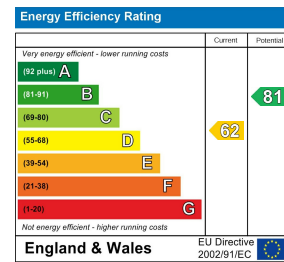
## Floor Plan



## Area Map



## Energy Efficiency Graph



These particulars, whilst believed to be accurate are set out as a general outline only for guidance and do not constitute any part of an offer or contract. Intending purchasers should not rely on them as statements of representation of fact, but must satisfy themselves by inspection or otherwise as to their accuracy. No person in this firm's employment has the authority to make or give any representation or warranty in respect of the property.

1 Gladys House South Road, Midsomer Norton, BA3 2EZ

Tel: 01761 360144 Email: [sales@bathstoneproperty.com](mailto:sales@bathstoneproperty.com) <https://www.bathstoneproperty.com>