



Gregorys Tynning

Paulton, BS39 7PW

£289,950

Launched by our Midsomer Norton branch!
This elevated bungalow sits towards the end of a lovely cul-de-sac in Paulton. There are fantastic views to front across Paulton and Timsbury providing a great setting. The accommodation has benefitted from many costly upgrades including new roof, gas boiler and UPVC windows and doors throughout.

- Motivated sellers
- Views to front
- Large Garage
- New roof, windows, doors and boiler
- New conservatory to rear
- Good sized garden

Viewing

Please contact our Bath Stone Property (MSN) Office on 01761 360144 if you wish to arrange a viewing appointment for this property or require further information.



3



1

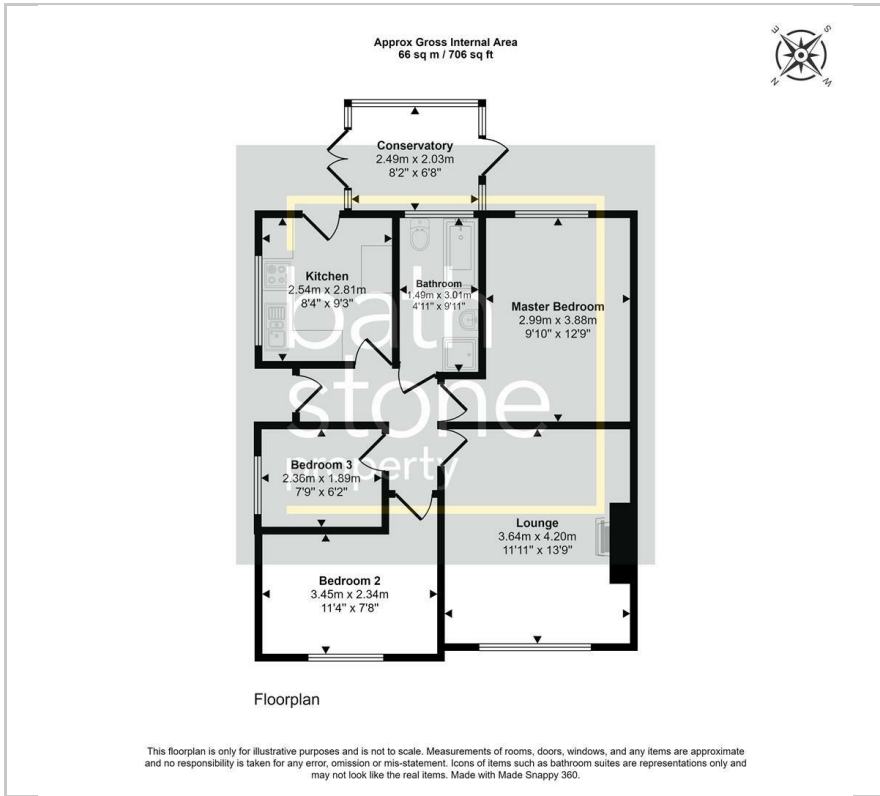


1



D

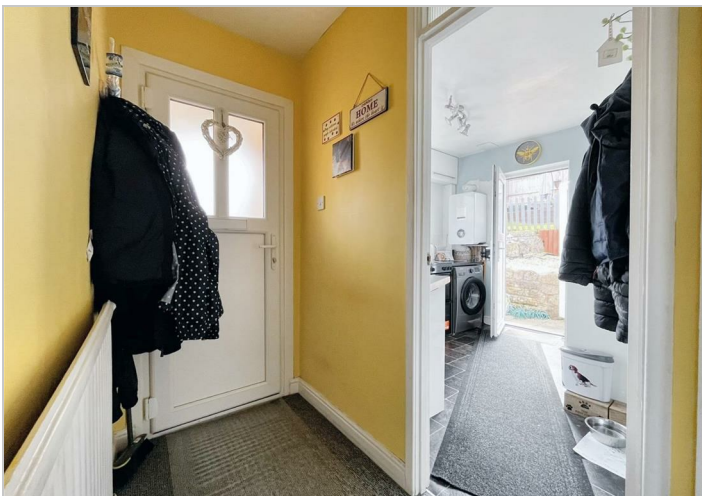
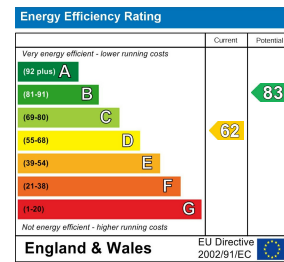
Floor Plan



Area Map



Energy Efficiency Graph



These particulars, whilst believed to be accurate are set out as a general outline only for guidance and do not constitute any part of an offer or contract. Intending purchasers should not rely on them as statements of representation of fact, but must satisfy themselves by inspection or otherwise as to their accuracy. No person in this firm's employment has the authority to make or give any representation or warranty in respect of the property.