



Bloomfield Drive

Bath, BA2 2BG

Offers In The Region Of £700,000



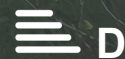
3



2



3



10

Bloomfield Drive



Description

Being sold with NO CHAIN - Bloomfield Drive boasts three spacious bedrooms, perfect for a growing family or those in need of extra space. With three reception rooms, there's plenty of room for entertaining guests. The property features two bathrooms, ensuring convenience and comfort for all residents. Parking is made easy with space for parking and a garage, a rare find in this sought-after area.

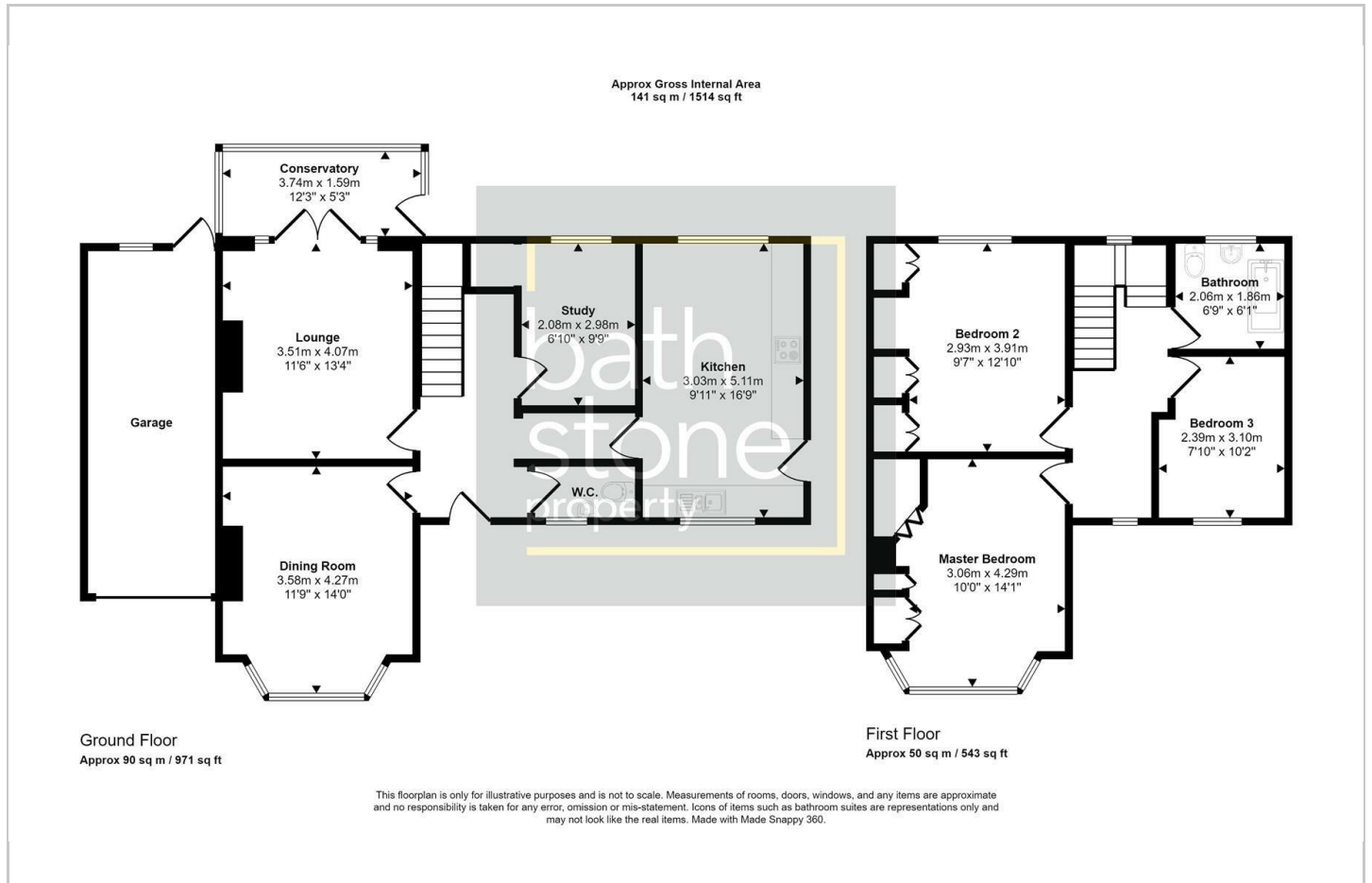
Detached
Three Reception Rooms
Garage and Driveway
Parking
Scenic Garden

Three Bedrooms
No Chain
Spacious

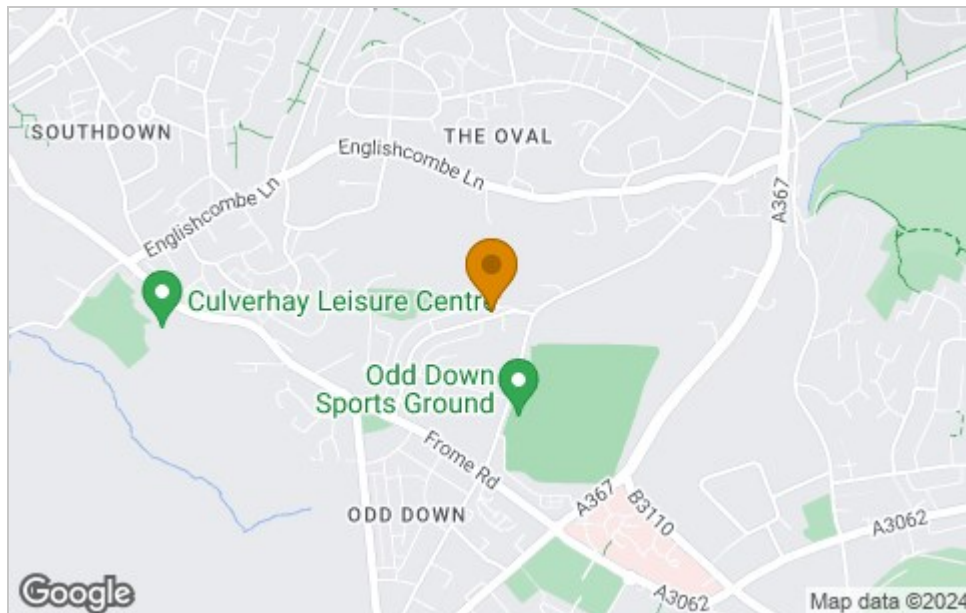




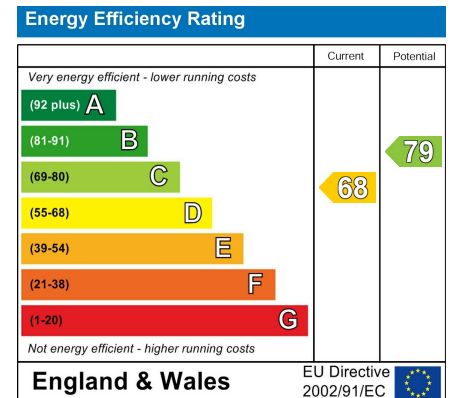
Floor Plan



Area Map



Energy Efficiency Graph



Viewing

Please contact our Bath Stone Property Office on 01225422224 if you wish to arrange a viewing appointment for this property or require further information.

These particulars, whilst believed to be accurate are set out as a general outline only for guidance and do not constitute any part of an offer or contract. Intending purchasers should not rely on them as statements of representation of fact, but must satisfy themselves by inspection or otherwise as to their accuracy. No person in this firm's employment has the authority to make or give any representation or warranty in respect of the property.