



4 Heather Rise Bannerdown Road

Batheaston, Bath, BA1 7PL

Price £400,000

360 VIRTUAL AVAILABLE Beautifully presented, show home like property located in Batheaston on a small, private development. The accommodation includes: cloakroom, spacious open plan kitchen, living and dining room to the ground floor, Two double bedrooms with two en-suites. Externally the property offers communal garden with views, bbq and seating area additionally, two parking spaces. The whole development is accessed via electronic gates. The property is a must to view to appreciate its spacious.

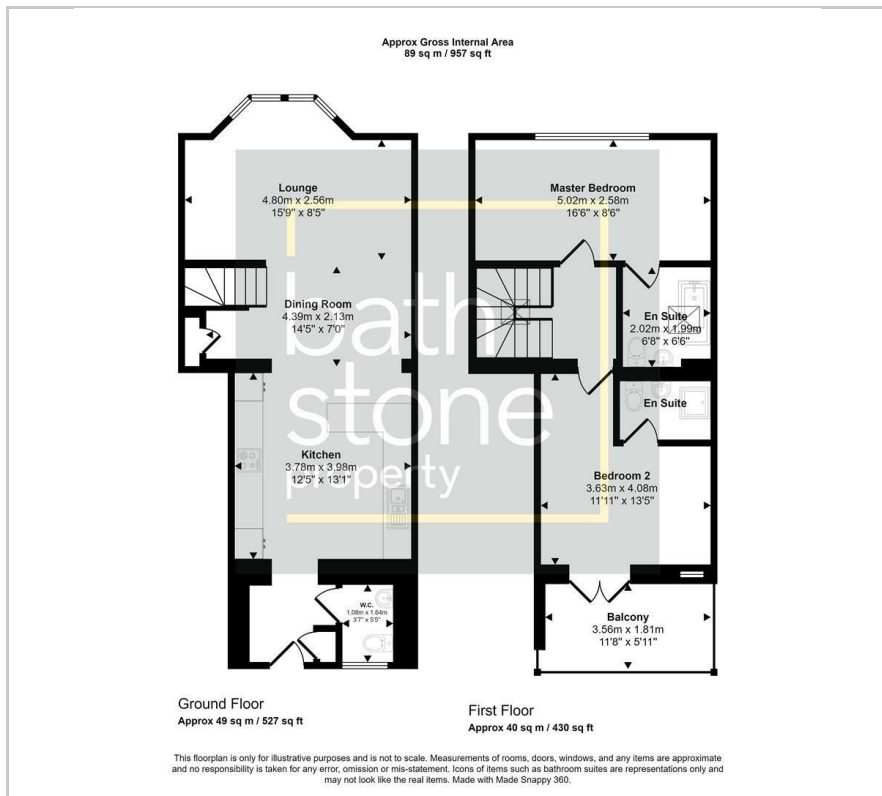
- Two Bedrooms
- Two En-suites
- Mid-Terrace
- Spacious
- Communal Garden
- Two Parking Spaces
- Private Gated Access
- Situated on a Small Development

Viewing

Please contact our Bath Stone Property Office on 01225422224 if you wish to arrange a viewing appointment for this property or require further information.



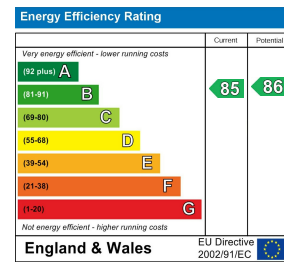
Floor Plan



Area Map



Energy Efficiency Graph



These particulars, whilst believed to be accurate are set out as a general outline only for guidance and do not constitute any part of an offer or contract. Intending purchasers should not rely on them as statements of representation of fact, but must satisfy themselves by inspection or otherwise as to their accuracy. No person in this firm's employment has the authority to make or give any representation or warranty in respect of the property.