



200 Charlton Park

Midsomer Norton, BA3 4BR

£379,950

Launched by our new Midsomer Norton branch!
Located within the desirable Charlton Park this property has been subject to a double storey extension that has produced a show stopping kitchen! There are four bedrooms, en-suite to main and even a home office.

Vendors suited with onward purchase with no chain!

Extended family home

High standard kitchen

Home office

Ample off street parking & garage

Set in the heart of the desirable Charlton Park

Call our Midsomer Norton branch today!

Viewing

Please contact our Midsomer Norton Branch on 01761 360144 if you wish to arrange a viewing appointment for this property or require further information.



4



2

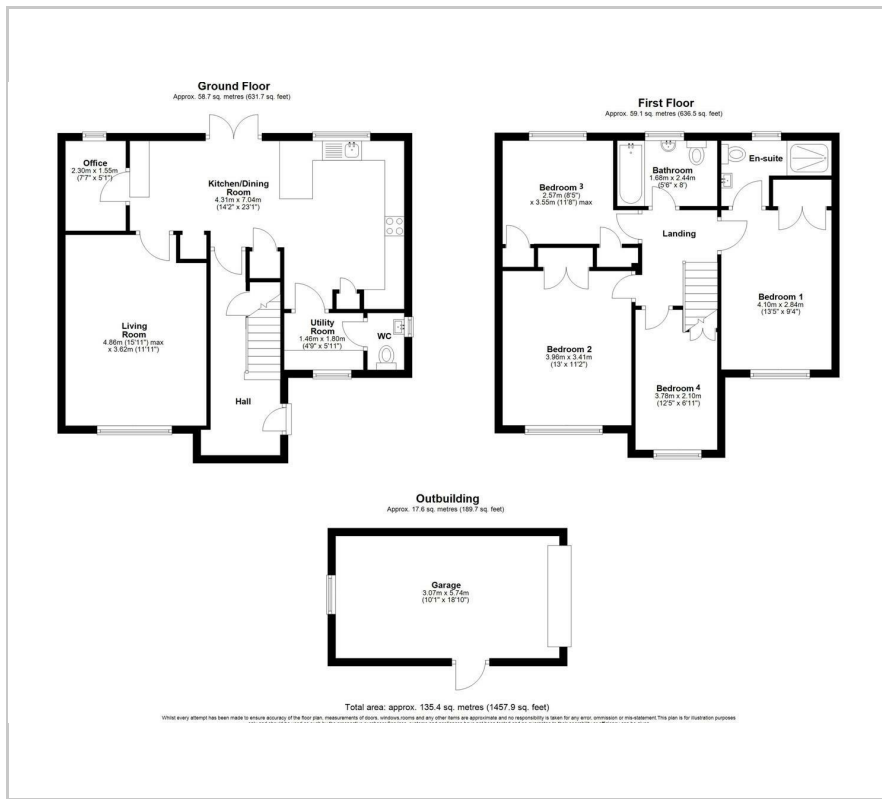


1



D

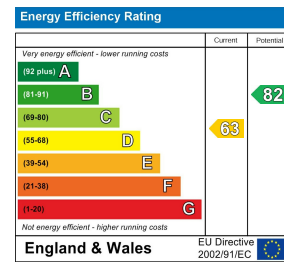
Floor Plan



Area Map



Energy Efficiency Graph



These particulars, whilst believed to be accurate are set out as a general outline only for guidance and do not constitute any part of an offer or contract. Intending purchasers should not rely on them as statements of representation of fact, but must satisfy themselves by inspection or otherwise as to their accuracy. No person in this firm's employment has the authority to make or give any representation or warranty in respect of the property.