



30 Bloomfield Rise

, Bath, BA2 2BL

Offers In Excess Of £400,000

VIRTUAL TOUR AVAILABLE - The cul-de-sac of Bloomfield Rise is a very sought-after location. This home offers spacious living accommodation with two reception rooms, a galley kitchen, wc, three bedrooms, a family bathroom, a garage, and a good-sized private garden.

- No Chain
- Three Bedrooms
- Spacious
- Two reception Rooms
- Downstairs WC
- Private Garden
- Cul-de-sac
- Garage

Viewing

Please contact our Bath Stone Property Office on 01225422224 if you wish to arrange a viewing appointment for this property or require further information.



3



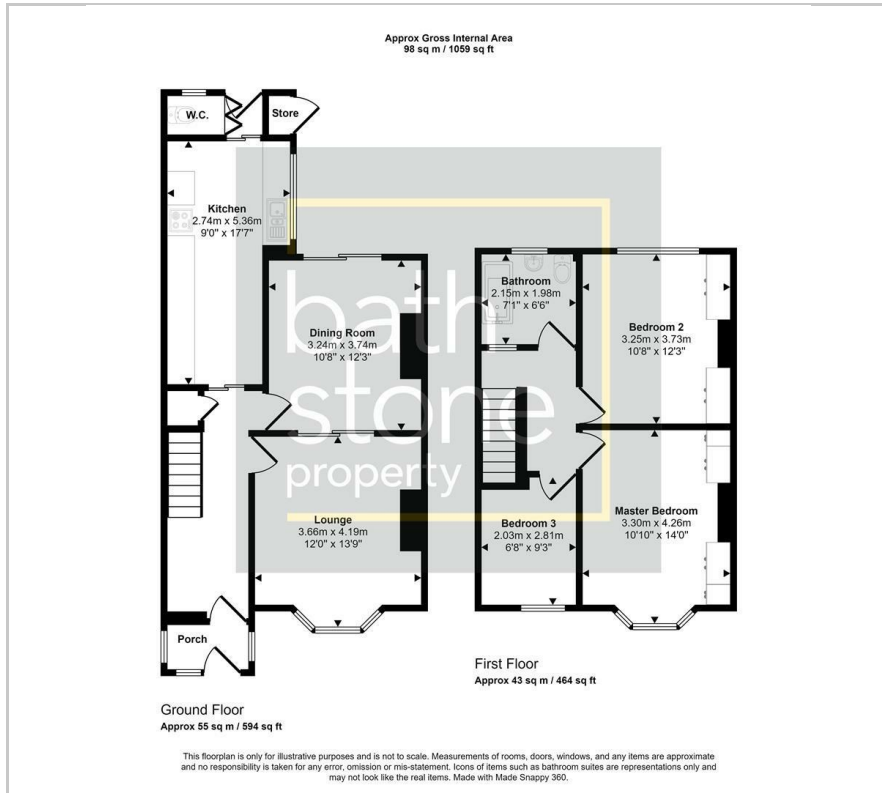
1



2



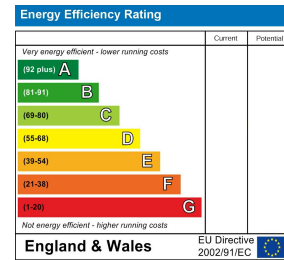
Floor Plan



Area Map



Energy Efficiency Graph



These particulars, whilst believed to be accurate are set out as a general outline only for guidance and do not constitute any part of an offer or contract. Intending purchasers should not rely on them as statements of representation of fact, but must satisfy themselves by inspection or otherwise as to their accuracy. No person in this firm's employment has the authority to make or give any representation or warranty in respect of the property.