



24 Sladebrook Road

Southdown, Bath, BA2 1LR

£650,000

A beautiful and stylishly presented detached dormer bungalow set on a generous plot on the lower slopes of Sladebrook Road. Offering open-plan kitchen/living space, three double bedrooms (master with en-suite) and double garage. The property is offered with no onward chain.

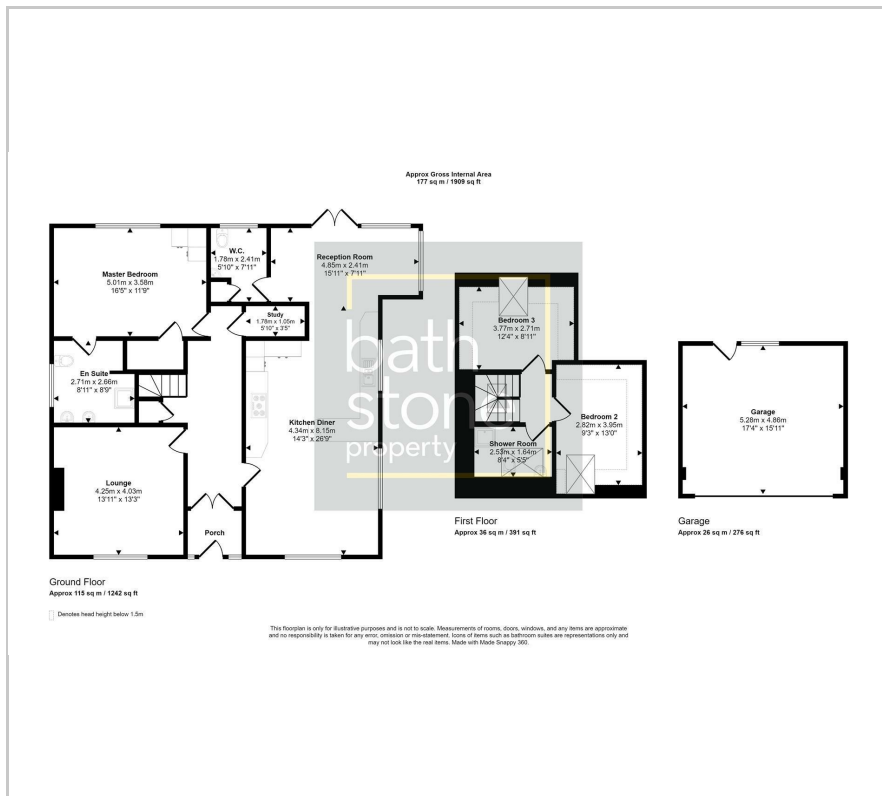
- Detached bungalow in large plot
- Large open-plan kitchen/reception area
- Three double bedrooms
- Master bedroom with en-suite shower room
- Generous driveway parking
- Double garage
- No onward chain

Viewing

Please contact our Bath Stone Property Office on 01225422224 if you wish to arrange a viewing appointment for this property or require further information.



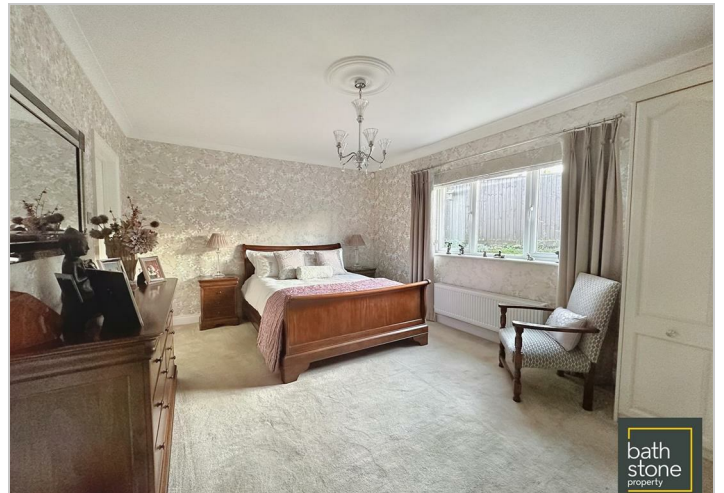
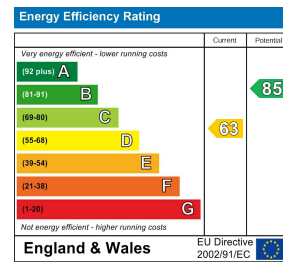
Floor Plan



Area Map



Energy Efficiency Graph



These particulars, whilst believed to be accurate are set out as a general outline only for guidance and do not constitute any part of an offer or contract. Intending purchasers should not rely on them as statements of representation of fact, but must satisfy themselves by inspection or otherwise as to their accuracy. No person in this firm's employment has the authority to make or give any representation or warranty in respect of the property.