



Corner Cottage, Main Street, Great Longstone, Derbyshire, DE45 1TZ

Saxton Mee

Main Street

Great Longstone

Guide Price

£250,000

£250,000 - £275,000 Guide Price

A charming and characterful stone-built end terrace cottage, beautifully positioned in the heart of the sought-after village of Great Longstone. This picturesque Derbyshire village lies within the Peak District National Park and offers a peaceful setting surrounded by stunning countryside, while also benefitting from a vibrant local community, country inns, a village shop and easy access to nearby walks and cycle trails, including the Monsal Trail.

The cottage retains a wealth of original features and presents an exciting opportunity as a permanent home, holiday let or investment property. The accommodation includes a welcoming fitted kitchen with a Belfast sink and feature fireplace, a cosy sitting room with a log burning stove and a ground floor bathroom.

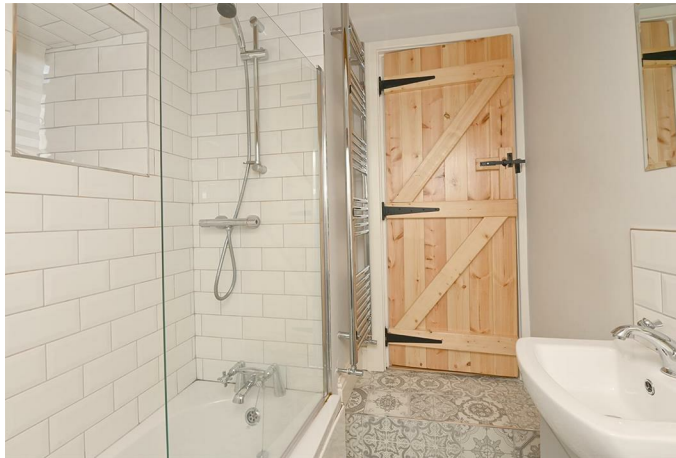
On the first floor, there are two generously proportioned double bedrooms, both full of charm and natural light.

The property is offered for sale with no upward chain, making it an ideal choice for those looking to secure a home in one of the Peak District's most desirable and well-connected villages.

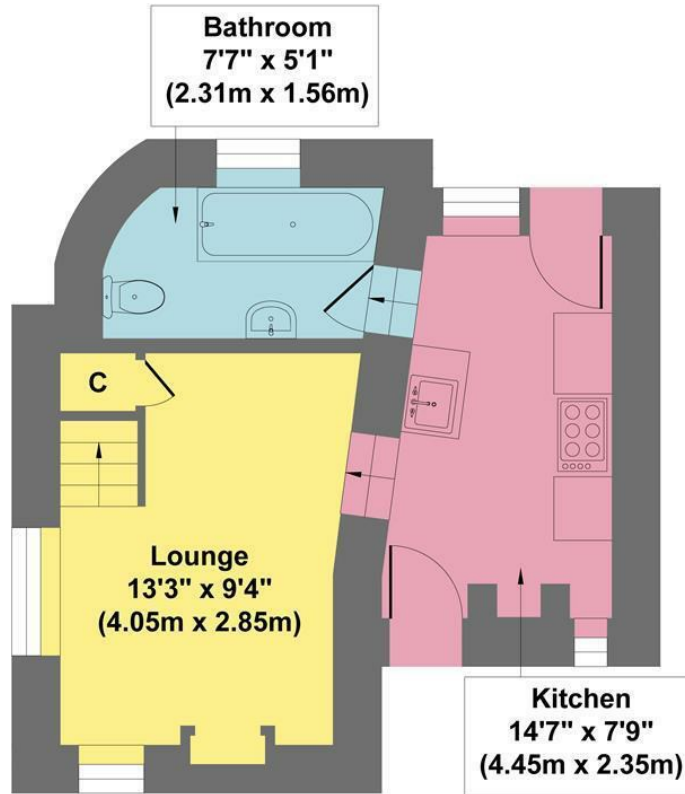


- Idyllic Peak District Village
- Ideal Main Home Or Investment Property
- Close To Local Shops & County Inns
- Excellent Local Primary School
- Immaculately Presented With Character Features
- Potential Holiday Cottage
- No Upward Chain
- EPC Rating: C
- Viewings: Bakewell Office

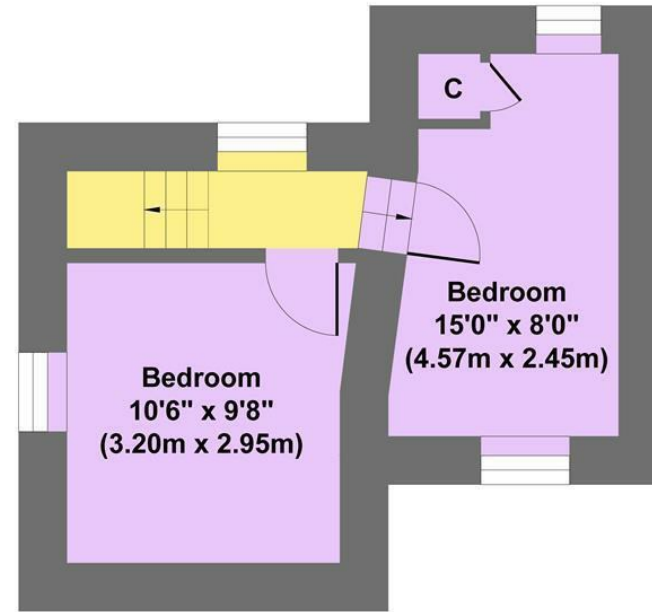




Corner Cottage



Ground Floor
Approximate Floor Area
Area 292 sq.ft
(27.15 sq.m.)



First Floor
Approximate Floor Area
Area 235 sq.ft
(21.81 sq.m.)

Approx. Gross Internal Floor Area 527 sq.ft / 48.97 sq.m

Illustration for identification puposes only ,measurements are approximate, not to scale

While we endeavour to make our sales particulars fair, accurate and reliable, they are only a general guide to the property and, accordingly, if there is any point, which is of particular importance to you, please contact the relevant office. The Agents have not tested any apparatus, equipment, fittings or services and so cannot verify they are in working order. The buyer is advised to obtain verification. Please note all the measurement details are approximate and should not be relied upon as exact. All plans, floor plans and maps are for guidance purposes only and are not to scale. Under no circumstances should they be relied upon as exact or for use in planning carpets and other such fixtures, fittings or furnishings. YOUR HOME IS AT RISK IF YOU DO NOT KEEP UP REPAYMENTS ON A MORTGAGE OR OTHER LOAN SECURED ON IT. 'A Life Assurance policy may be requested.' 'Written Quotations of credit terms available on request.'

Banner Cross
T: 0114 268 3241
E: bannercross@saxtonmee.co.uk
www.saxtonmee.co.uk

Hathersage
T: 01433 650009
E: hathersage@saxtonmee.co.uk

Bakewell
T: 01629 815307
E: bakewell@saxtonmee.co.uk

Matlock
T: 01629 828250
E: matlock@saxtonmee.co.uk

