



The Bobbin, 3 Lower Terrace Road, Tideswell, Derbyshire, SK17 8LX

Saxton Mee

3 Lower Terrace Road

Tideswell

Guide Price

£300,000

£300,000 - £325,000 Guide Price

Nestled in a peaceful position with elevated views across the village and surrounding countryside, this traditional stone-built character cottage offers two well-proportioned double bedrooms and an abundance of charm. Ideally situated in the popular Peak District village of Tideswell, it is within easy reach of a superb selection of shops, amenities and a lively calendar of local events. Surrounded by the breathtaking Derbyshire landscape, the location is perfect for those who enjoy walking, cycling and other outdoor pursuits.

The cottage itself is beautifully presented and has undergone a full upgrade and sympathetic refurbishment in recent years. It currently operates as a successful holiday let, with the contents available by separate negotiation. Equally well-suited as a permanent residence, the accommodation begins with a welcoming front entrance porch that opens into a spacious sitting room, where a fireplace with a log-burning stove adds warmth and character. The dining kitchen is fitted with a range of units and appliances, offering a practical yet charming space for everyday living.

Upstairs, a first-floor landing leads to a modern shower room and two generous double bedrooms, both enjoying pleasant outlooks.

Outside, there is a small courtyard to the rear and an easily managed seating terrace at the front, perfect for relaxing and taking in the views.

This delightful property is offered with no upward chain.

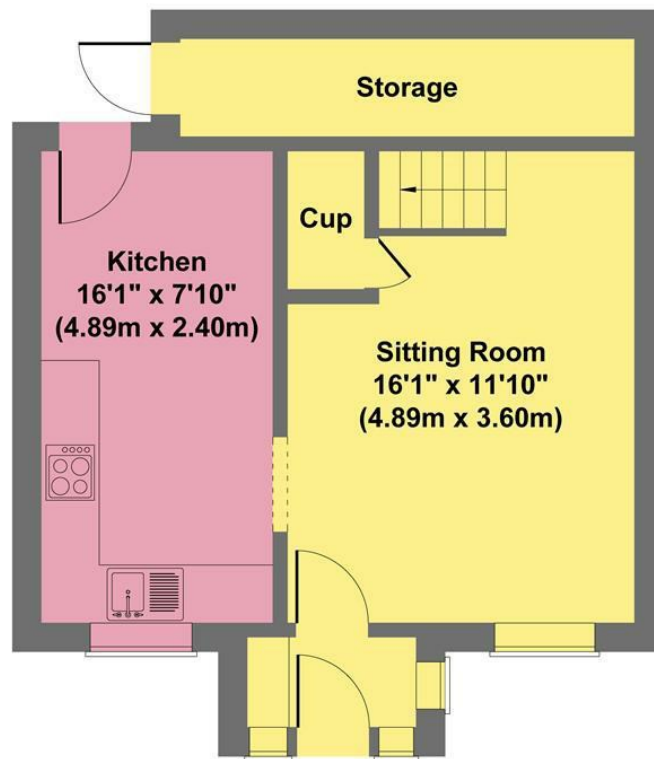


- Peaceful Setting With Attractive Views
- Thriving Village Community
- Excellent Amenities
- Direct Access To A Wealth Of Outdoor Pursuits
- Traditional Features
- Currently Run As A Successful Holiday Let
- Ideal Main Home
- No Upward Chain
- EPC: D
- Viewings: Bakewell Office

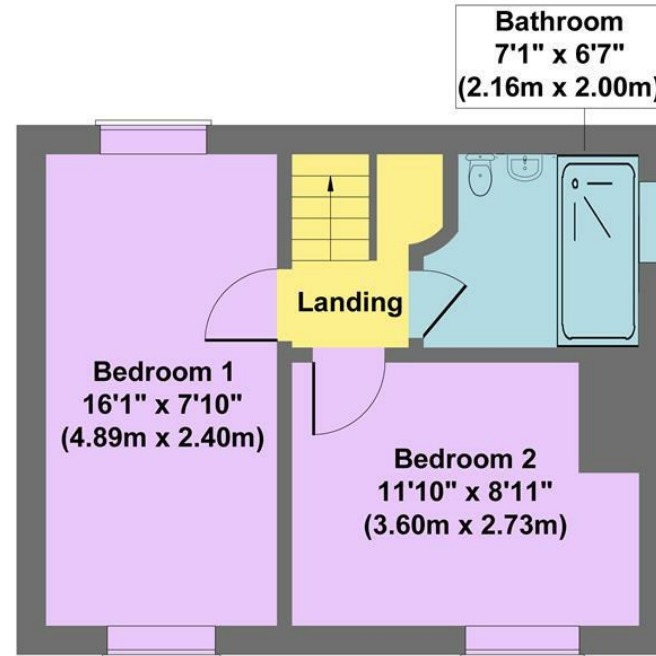




The Bobbin



Ground Floor
Approximate Floor Area
403 sq.ft
(37.46 sq.m.)



First Floor
Approximate Floor Area
324 sq.ft
(30.07 sq.m.)

Approx. Gross Internal Floor Area 727 sq.ft / 67.53 sq.m

Illustration for identification puposes only measurements are approximate, not to scale

While we endeavour to make our sales particulars fair, accurate and reliable, they are only a general guide to the property and, accordingly, if there is any point, which is of particular importance to you, please contact the relevant office. The Agents have not tested any apparatus, equipment, fittings or services and so cannot verify they are in working order. The buyer is advised to obtain verification. Please note all the measurement details are approximate and should not be relied upon as exact. All plans, floor plans and maps are for guidance purposes only and are not to scale. Under no circumstances should they be relied upon as exact or for use in planning carpets and other such fixtures, fittings or furnishings. YOUR HOME IS AT RISK IF YOU DO NOT KEEP UP REPAYMENTS ON A MORTGAGE OR OTHER LOAN SECURED ON IT. 'A Life Assurance policy may be requested.' 'Written Quotations of credit terms available on request.'

Banner Cross
T: 0114 268 3241
E: bannercross@saxtonmee.co.uk
www.saxtonmee.co.uk

Hathersage
T: 01433 650009
E: hathersage@saxtonmee.co.uk

Bakewell
T: 01629 815307
E: bakewell@saxtonmee.co.uk

Matlock
T: 01629 828250
E: matlock@saxtonmee.co.uk

