



Endcliffe Rocks, The Rock, Bakewell, Derbyshire, DE45 1DH

Saxton Mee

The Rock

Offers In The Region Of

£950,000

Perched in an enviable position with spectacular views across the historic market town of Bakewell, this impressive four bedroom, double fronted stone built residence is a home of distinction. Brimming with original features and sympathetically presented with traditional décor, every detail has been carefully considered to enhance its period charm. Set within beautifully landscaped gardens, the property also benefits from generous off-road parking for several vehicles and a detached stone cottage, currently run as a successful holiday let.

Stepping through the entrance porch, a welcoming hallway with oak flooring, leads into a charming sitting room where a striking feature fireplace houses a Jotul log-burning stove. The formal dining room has a raised fireplace and gas stove. A bespoke shaker-style kitchen boasts hand-painted units, a double Belfast sink, integrated appliances and a pantry cupboard, all complemented by reclaimed York stone flooring. A study and the large hardwood conservatory, overlooks the private rear courtyard. A ground-floor WC completes the accommodation on this level.

Upstairs, the first-floor landing leads to four beautifully appointed bedrooms. The luxurious family bathroom is a standout feature, with a freestanding bath adding to its period elegance.

Beyond the main residence, the detached cottage provides a delightful additional living space. Thoughtfully designed, it includes a pretty sitting room that flows into a maple-fitted kitchen, while a mezzanine-level double bedroom and a stylish shower room complete the accommodation.

A private driveway offers ample parking. The mature gardens have been lovingly designed, featuring a variety of well-stocked beds, borders, specimen shrubs and trees, creating a haven of tranquillity.

Bakewell itself is one of the Peak District's most desirable market towns,

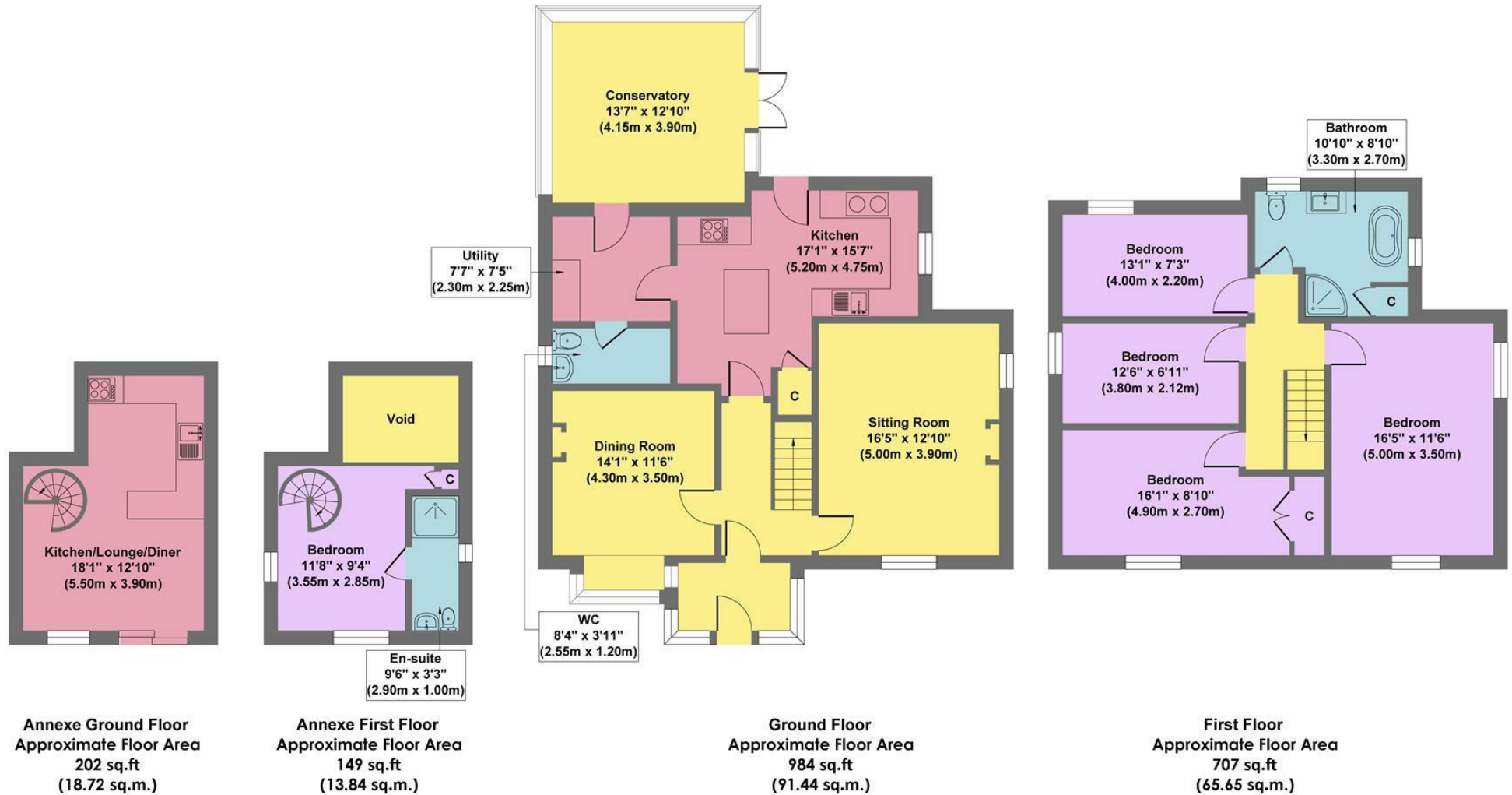


- Superb Far Reaching Views
- Stunning Landscaped Gardens
- Detached One Bedroom Cottage
- Generous Off Road Parking For Several Vehicles
- Within Lady Manners School Catchment
- Excellent Town Centre Amenities & Leisure Facilities
- Traditional Period Features
- Direct Access to A Wealth Of Outdoor Pursuits
- EPC: E
- Viewings: Bakewell Office





Endcliffe Rocks



Approx. Gross Internal Floor Area 2042 sq.ft / 189.65 sq.m

Illustration for identification purposes only, measurements are approximate, not to scale

While we endeavour to make our sales particulars fair, accurate and reliable, they are only a general guide to the property and, accordingly, if there is any point, which is of particular importance to you, please contact the relevant office. The Agents have not tested any apparatus, equipment, fittings or services and so cannot verify they are in working order. The buyer is advised to obtain verification. Please note all the measurement details are approximate and should not be relied upon as exact. All plans, floor plans and maps are for guidance purposes only and are not to scale. Under no circumstances should they be relied upon as exact or for use in planning carpets and other such fixtures, fittings or furnishings. YOUR HOME IS AT RISK IF YOU DO NOT KEEP UP REPAYMENTS ON A MORTGAGE OR OTHER LOAN SECURED ON IT. 'A Life Assurance policy may be requested.' 'Written Quotations of credit terms available on request.'

Banner Cross
T: 0114 268 3241
E: bannercross@saxtonmee.co.uk
www.saxtonmee.co.uk

Hathersage
T: 01433 650009
E: hathersage@saxtonmee.co.uk

Bakewell
T: 01629 815307
E: bakewell@saxtonmee.co.uk

Matlock
T: 01629 828250
E: matlock@saxtonmee.co.uk

Saxton Mee