



8 Hall End Lane, Ashford-In-The-Water, Derbyshire, DE45 1QJ

Saxton Mee

8 Hall End Lane

Ashford-In-The-Water

Offers Over

£325,000

Nestled in the heart of the picturesque village of Ashford in the Water, 8 Hall End Lane is a beautifully presented stone-built cottage, exuding charm and character. With two spacious double bedrooms and an inviting living space, this delightful home is perfect as a main residence or a holiday retreat, especially as it is available with no upward chain.

The cottage welcomes you with a light-filled living room, where the warmth of a gritstone fireplace and a log-burning stove create a cosy atmosphere. The open-plan kitchen, finished to a high standard, flows effortlessly into a generous family room, offering a wonderful space for entertaining. A separate utility room and a ground-floor shower room add to the home's practicality.

Upstairs, the landing leads to two double bedrooms, each thoughtfully designed to make the most of the cottage's charming character. The bathroom, complete with a separate shower enclosure.

To the rear of the property, the easily managed garden is a peaceful haven, with planted beds, borders, and a seating terrace.

Set within one of the Peak District's most scenic villages, the location is truly special. Ashford in the Water, with its enchanting setting on the banks of the River Wye, is home to the famous medieval Sheepwash Bridge, a favourite among photographers and steeped in history. The village offers a selection of country inns, a charming tea room, a traditional hotel and a village shop.

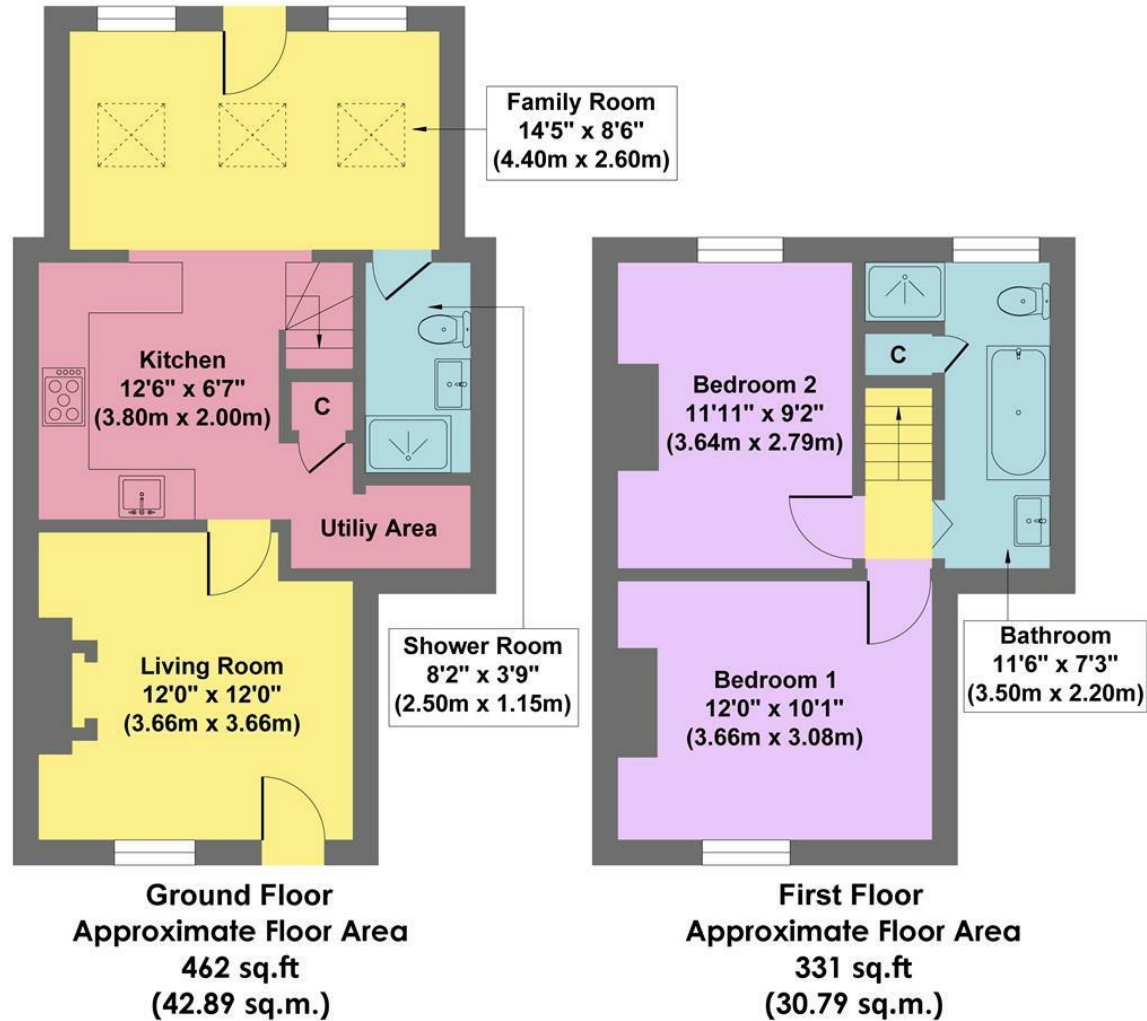
Surrounded by breathtaking countryside, this is a haven for walkers and cyclists, with an abundance of trails leading to nearby villages, the market town of Bakewell, and the magnificent Chatsworth Estate. With its blend of traditional charm and modern comfort.



- Idyllic Peak District Village
- Aisseford Tea Rooms, Bulls Head Pub, Ashford Arms Hotel & Village Shop
- Spacious Light & Airy Accommodation
- Peaceful Setting (no through road)
- Easily Managed South Facing Garden
- Direct Access To A Wealth of Local Walks
- No Upward Chain
- EPC: TBC
- Viewings: Bakewell Office



8 Hall End Lane



Approx. Gross Internal Floor Area 793 sq.ft / 73.68 sq.m

Illustration for identification purposes only, measurements are approximate, not to scale

While we endeavour to make our sales particulars fair, accurate and reliable, they are only a general guide to the property and, accordingly, if there is any point, which is of particular importance to you, please contact the relevant office. The Agents have not tested any apparatus, equipment, fittings or services and so cannot verify they are in working order. The buyer is advised to obtain verification. Please note all the measurement details are approximate and should not be relied upon as exact. All plans, floor plans and maps are for guidance purposes only and are not to scale. Under no circumstances should they be relied upon as exact or for use in planning carpets and other such fixtures, fittings or furnishings. YOUR HOME IS AT RISK IF YOU DO NOT KEEP UP REPAYMENTS ON A MORTGAGE OR OTHER LOAN SECURED ON IT. 'A Life Assurance policy may be requested.' 'Written Quotations of credit terms available on request.'

Banner Cross
T: 0114 268 3241
E: bannercross@saxtonmee.co.uk
www.saxtonmee.co.uk

Hathersage
T: 01433 650009
E: hathersage@saxtonmee.co.uk

Bakewell
T: 01629 815307
E: bakewell@saxtonmee.co.uk

Matlock
T: 01629 828250
E: matlock@saxtonmee.co.uk

