



Ash Cottage, School Lane, Baslow, Derbyshire, DE45 1RZ

Saxton Mee

School Lane

Baslow

£299,000

Tucked away in the heart of the picturesque village of Baslow, this gorgeous one-bedroom stone-built cottage exudes charm and sophistication. Refurbished to an exceptional standard by the current owner, the property combines timeless character with contemporary luxury. Creating a stylish and welcoming retreat that is currently operated as a successful holiday let, with furnishings available by separate negotiation.

The cottage sits in a peaceful yet central position within this highly sought-after village, which is renowned for its blend of rural tranquility and vibrant community. Baslow offers a choice of local pubs, cafes and independent shops, all just a short stroll away, and lies on the doorstep of the magnificent Chatsworth Estate. With excellent transport links, it also offers easy access to Sheffield, Chesterfield and Manchester.

Inside, the light-filled accommodation flows seamlessly from a beautifully fitted kitchen complete with units and integrated appliances into the charming living and dining area. A door opens onto a seating terrace, perfect for enjoying the surroundings.

Stone steps lead down to a useful cellar utility space.

Upstairs, the first floor reveals a delightful double bedroom and a luxurious bathroom that boasts a separate shower enclosure, designed with the same eye for quality found throughout the property.

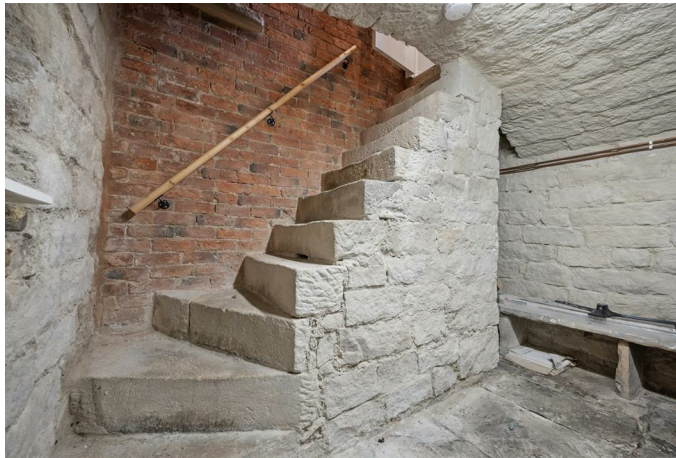
Outside, both the front and rear gardens are easily managed and landscaped.

The property is offered with no upward chain.

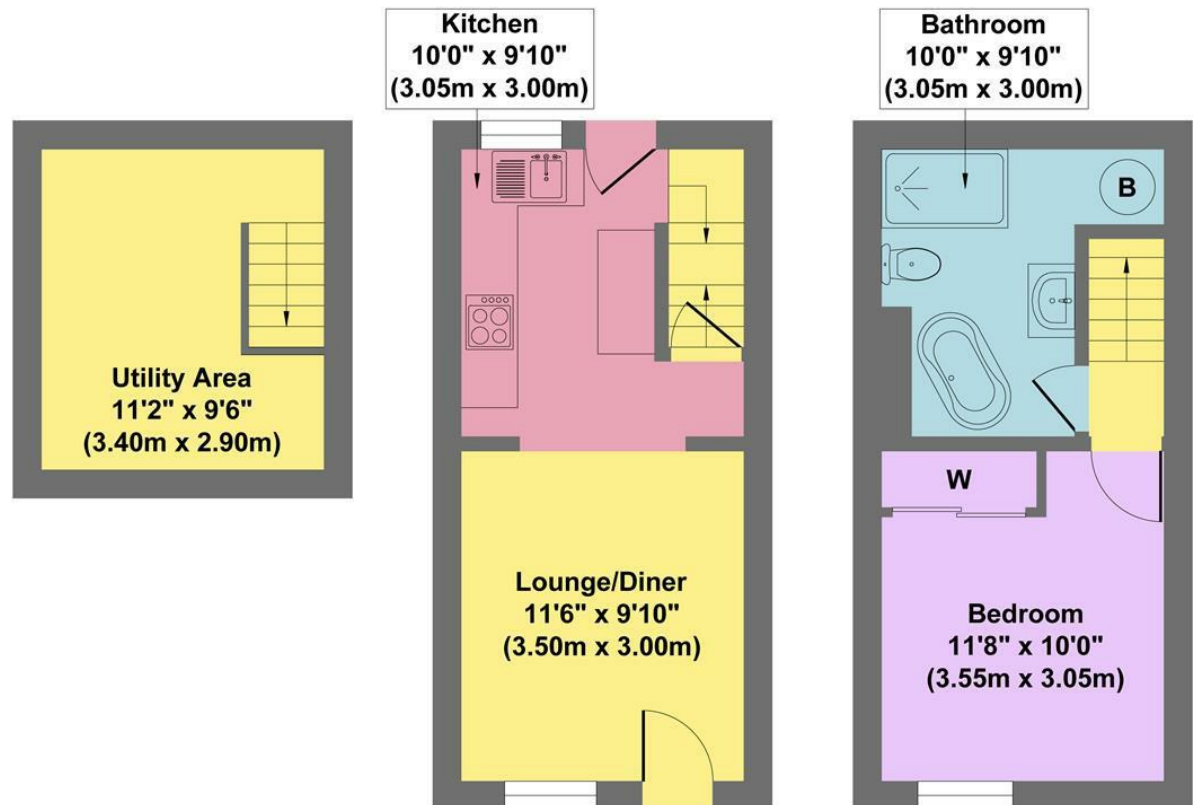


- A Little Gem
- Front & Rear Gardens
- Immaculately Presented
- Idyllic Peaceful Setting
- Direct Access To Many Local Walks
- Excellent Village Amenities
- Contents By Separate Negotiation
- No Upward Chain
- EPC: TBC
- Viewings: Bakewell Office





Ash Cottage



Cellar
Approximate Floor Area
110 sq.ft
(10.20 sq.m.)

Ground Floor
Approximate Floor Area
216 sq.ft
(20.10 sq.m.)

First Floor
Approximate Floor Area
216 sq.ft
(20.10 sq.m.)

Approx. Gross Internal Floor Area 542 sq.ft / 50.40 sq.m

Illustration for identification purposes only, measurements are approximate, not to scale

While we endeavour to make our sales particulars fair, accurate and reliable, they are only a general guide to the property and, accordingly, if there is any point, which is of particular importance to you, please contact the relevant office. The Agents have not tested any apparatus, equipment, fittings or services and so cannot verify they are in working order. The buyer is advised to obtain verification. Please note all the measurement details are approximate and should not be relied upon as exact. All plans, floor plans and maps are for guidance purposes only and are not to scale. Under no circumstances should they be relied upon as exact or for use in planning carpets and other such fixtures, fittings or furnishings. YOUR HOME IS AT RISK IF YOU DO NOT KEEP UP REPAYMENTS ON A MORTGAGE OR OTHER LOAN SECURED ON IT. 'A Life Assurance policy may be requested.' 'Written Quotations of credit terms available on request.'

Banner Cross
T: 0114 268 3241
E: bannercross@saxtonmee.co.uk
www.saxtonmee.co.uk

Hathersage
T: 01433 650009
E: hathersage@saxtonmee.co.uk

Bakewell
T: 01629 815307
E: bakewell@saxtonmee.co.uk

Matlock
T: 01629 828250
E: matlock@saxtonmee.co.uk

