



Time Cottage, Nether End, Baslow, Derbyshire, DE45 1SR

Saxton Mee

Nether End

Baslow

Asking Price

£350,000

Situated on a peaceful riverside plot in the picturesque village of Baslow, this delightful two double bedroom character cottage effortlessly blends traditional charm with high quality contemporary finishes. The home welcomes you through an entrance porch that flows into inviting dining room, where exposed stonework and a log burning stove immediately set the tone for the cottage's cosy atmosphere. The adjacent fitted kitchen is both stylish and practical, featuring a thoughtful arrangement of units and modern appliances.

The spacious sitting room, with a log burning stove and opens seamlessly into a bright sun room, inviting you to soak in the idyllic riverside views and tranquil surroundings.

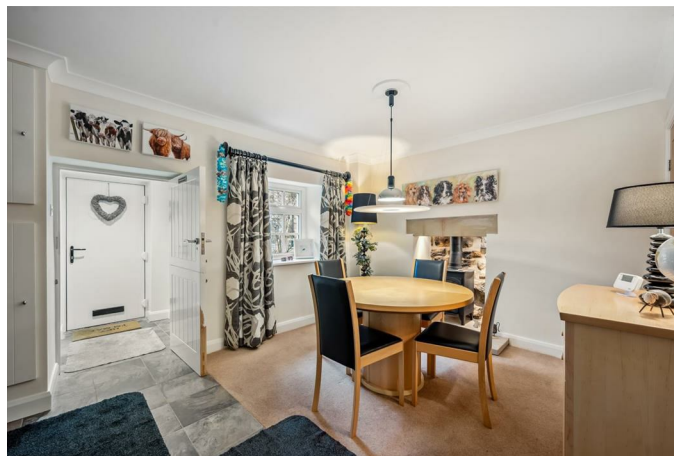
Upstairs, the first floor landing leads to two generously proportioned double bedrooms. One offers fitted wardrobes and a private WC with wash hand basin, while the second features built-in wardrobes and is served by a well-appointed bathroom complete with a separate shower enclosure.

Outside, the cottage enjoys an easily maintained front garden and a rear balcony that provides an idyllic spot. The property is offered with no upward chain, making it an ideal choice for those seeking a relaxed lifestyle or a charming weekend retreat.

Baslow is a thriving village with a strong sense of community, known for its natural beauty and rich local heritage. Set amidst rolling countryside, it offers scenic riverside walks, traditional village pubs, a tearoom and a small selection of independent shops and services. The surrounding area is ideal for nature lovers and those who enjoy outdoor pursuits, while good transport links provide easy access to nearby market towns and further afield.

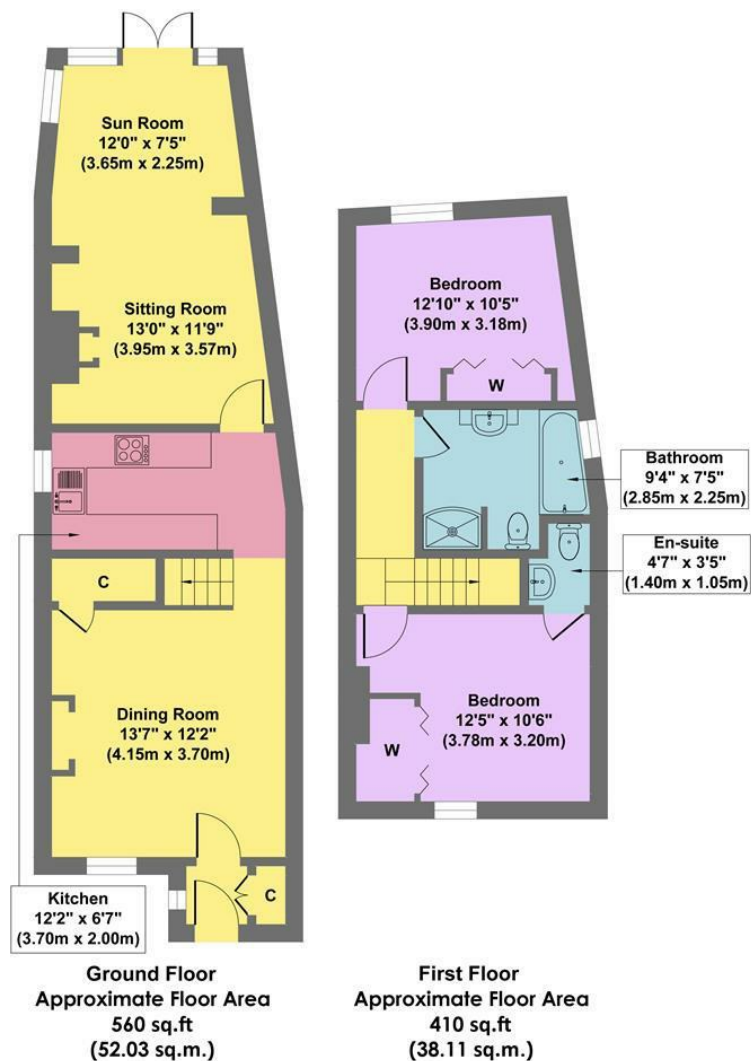


- Idyllic Riverside Setting
- Sought After Peak District Village
- Traditional Features
- Excellent Local Amenities
- Log Burning Stoves
- Direct Access To A Wealth Of Outdoor Pursuits
- Immaculately Presented
- No Upward Chain
- EPC: D
- Viewings: Bakewell Office





Time Cottage



Approx. Gross Internal Floor Area 970 sq.ft / 90.14 sq.m

Illustration for identification puposes only ,measurements are approximate, not to scale

While we endeavour to make our sales particulars fair, accurate and reliable, they are only a general guide to the property and, accordingly, if there is any point, which is of particular importance to you, please contact the relevant office. The Agents have not tested any apparatus, equipment, fittings or services and so cannot verify they are in working order. The buyer is advised to obtain verification. Please note all the measurement details are approximate and should not be relied upon as exact. All plans, floor plans and maps are for guidance purposes only and are not to scale. Under no circumstances should they be relied upon as exact or for use in planning carpets and other such fixtures, fittings or furnishings. YOUR HOME IS AT RISK IF YOU DO NOT KEEP UP REPAYMENTS ON A MORTGAGE OR OTHER LOAN SECURED ON IT. 'A Life Assurance policy may be requested.' 'Written Quotations of credit terms available on request.'

Banner Cross
T: 0114 268 3241
E: bannercross@saxtonmee.co.uk
www.saxtonmee.co.uk

Hathersage
T: 01433 650009
E: hathersage@saxtonmee.co.uk

Bakewell
T: 01629 815307
E: bakewell@saxtonmee.co.uk

Matlock
T: 01629 828250
E: matlock@saxtonmee.co.uk

