



15 Stoney Close, Bakewell, Derbyshire, DE45 1FR

Saxton Mee

15 Stoney Close

Guide Price

£225,000

Tucked away in a desirable residential area of the historic market town of Bakewell, this three-bedroom end-terrace home effortlessly blends practicality and convenience. Positioned on the outskirts of Bakewell, the property enjoys an elevated location above the town, offering easy access to local amenities and schools, including the highly regarded Lady Manners School. Residents can take full advantage of Bakewell's vibrant array of shops, cafés and leisure facilities, all set against the stunning backdrop of the Derbyshire countryside and the sprawling Peak District National Park, famous for its outdoor adventures.

225,000 - £250,000 Guide Price

It presents an exciting opportunity for modernisation, allowing buyers to complete it to their own taste and style. The ground floor is well-planned, comprising an entrance hall with built-in storage, a bright dual-aspect sitting room, a functional fitted kitchen with a walk-in pantry and a rear entrance lobby with additional storage space. On the first floor, the landing leads to two double bedrooms, a single bedroom and a shower room, providing comfortable accommodation.

Outside, the house benefits from low-maintenance gardens to the front and rear with a glazed greenhouse and timber storage shed, ideal for relaxing or gardening. A shared driveway connects the property to a detached timber garage/workshop, offering further practicality.

With no upward chain, this delightful home promises a relaxed lifestyle in a sought-after location, perfect for families or anyone looking for a peaceful haven in the heart of Derbyshire.

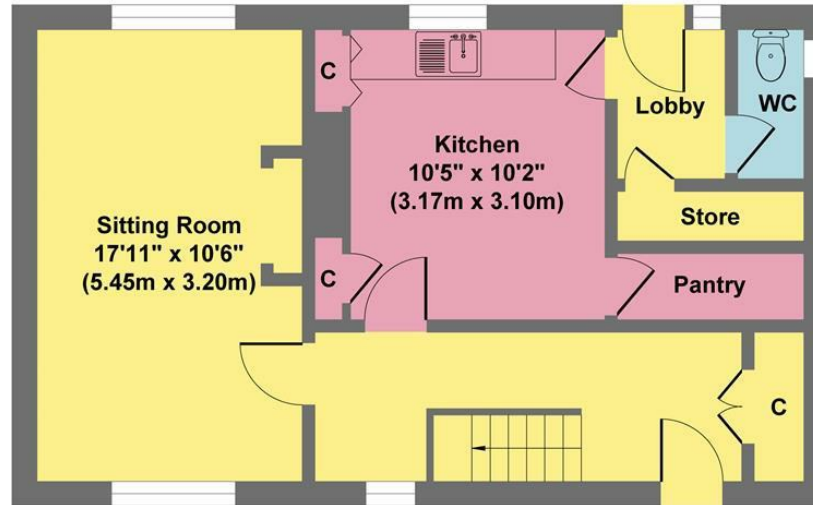
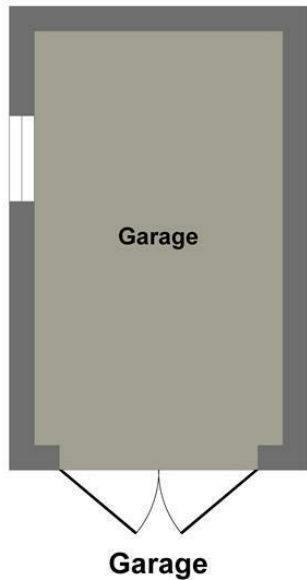


- Bordered By Stunning Derbyshire Countryside
- Access To Many Local Walks
- Close To Excellent Local Shops & Amenities
- Shared Driveway & Garage To The Rear
- Close To Lady Manners School
- Offers Scope To Complete To Individual Specifications
- No Upward Chain
- EPC D

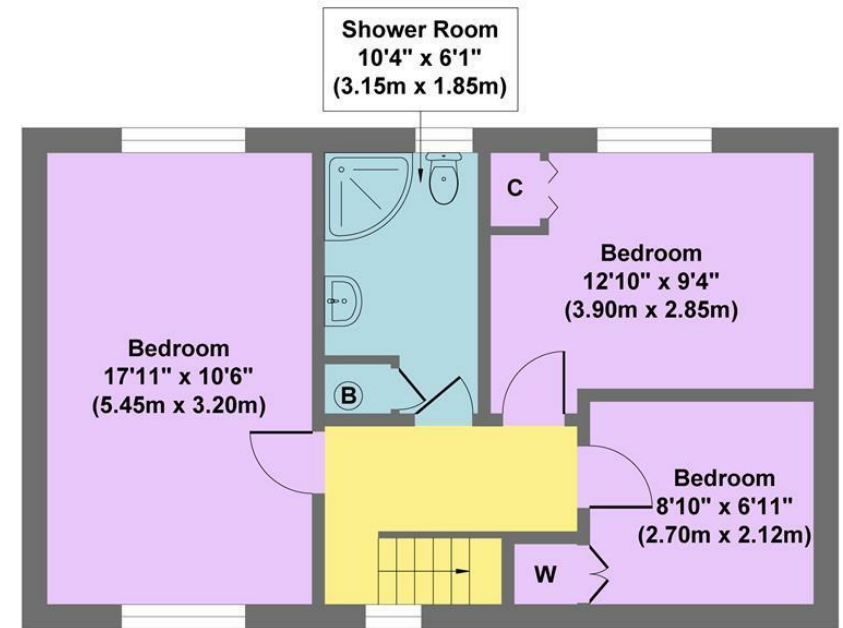




15 Stoney Close



Ground Floor
Approximate Floor Area
543 sq.ft
(50.41 sq.m.)



First Floor
Approximate Floor Area
543 sq.ft
(50.41 sq.m.)

Approx. Gross Internal Floor Area 1086 sq.ft / 100.82 sq.m
(Excluding Garage)

Illustration for identification puposes only ,measurements are approximate, not to scale

While we endeavour to make our sales particulars fair, accurate and reliable, they are only a general guide to the property and, accordingly, if there is any point, which is of particular importance to you, please contact the relevant office. The Agents have not tested any apparatus, equipment, fittings or services and so cannot verify they are in working order. The buyer is advised to obtain verification. Please note all the measurement details are approximate and should not be relied upon as exact. All plans, floor plans and maps are for guidance purposes only and are not to scale. Under no circumstances should they be relied upon as exact or for use in planning carpets and other such fixtures, fittings or furnishings. YOUR HOME IS AT RISK IF YOU DO NOT KEEP UP REPAYMENTS ON A MORTGAGE OR OTHER LOAN SECURED ON IT. 'A Life Assurance policy may be requested.' 'Written Quotations of credit terms available on request.'

Banner Cross
T: 0114 268 3241
E: bannercross@saxtonmee.co.uk
www.saxtonmee.co.uk

Hathersage
T: 01433 650009
E: hathersage@saxtonmee.co.uk

Bakewell
T: 01629 815307
E: bakewell@saxtonmee.co.uk

Matlock
T: 01629 828250
E: matlock@saxtonmee.co.uk

