



Merman Barn Alma Road, Tideswell, Derbyshire, SK17 8LS

Saxton Mee

Merman Barn Alma Road

Tideswell

Offers In The Region Of

£775,000

Nestled in a desirable Peak District village, an expansive six-bedroom, five-bathroom detached property. The residence is thoughtfully designed with ample space & flexibility, including a double garage that offers potential for conversion into a self-contained annex, pending the necessary planning approvals

The home is ideally situated near an array of village amenities, all just a short stroll away. This vibrant village is well-regarded for its primary school, historic church & an active community spirit, making it a highly sought-after location. Surrounded by scenic Derbyshire countryside with access to local walking & cycle trails, as well as a busy schedule of village events. The home's location also offers convenient commuting options to Buxton, Manchester & Sheffield.

Generously proportioned, with oil fired central heating & double glazing throughout. The layout features an inviting entrance hallway that leads to a study, a formal dining room & a cozy sitting room with a log-burning stove. The sitting room opens out onto the rear garden through beautiful feature doors, blending indoor and outdoor living. A fitted dining kitchen, complete with a range of units & appliances, flows into an additional lounge area that boasts a rustic brick fireplace with another log burner, creating a warm & welcoming atmosphere.

The first-floor landing connects to three double bedrooms, with built-in storage & en-suite shower rooms. Additionally, a fourth double bedroom shares a 'Jack & Jill' style bathroom. On the second floor, a landing leads to two more double bedrooms & a shower room.

A private driveway provides generous parking for multiple vehicles & leads to the double garage, which includes an adjoining utility & WC. Outside, the rear garden is designed for easy maintenance, featuring flower beds, borders, a seating terrace & a summer house,

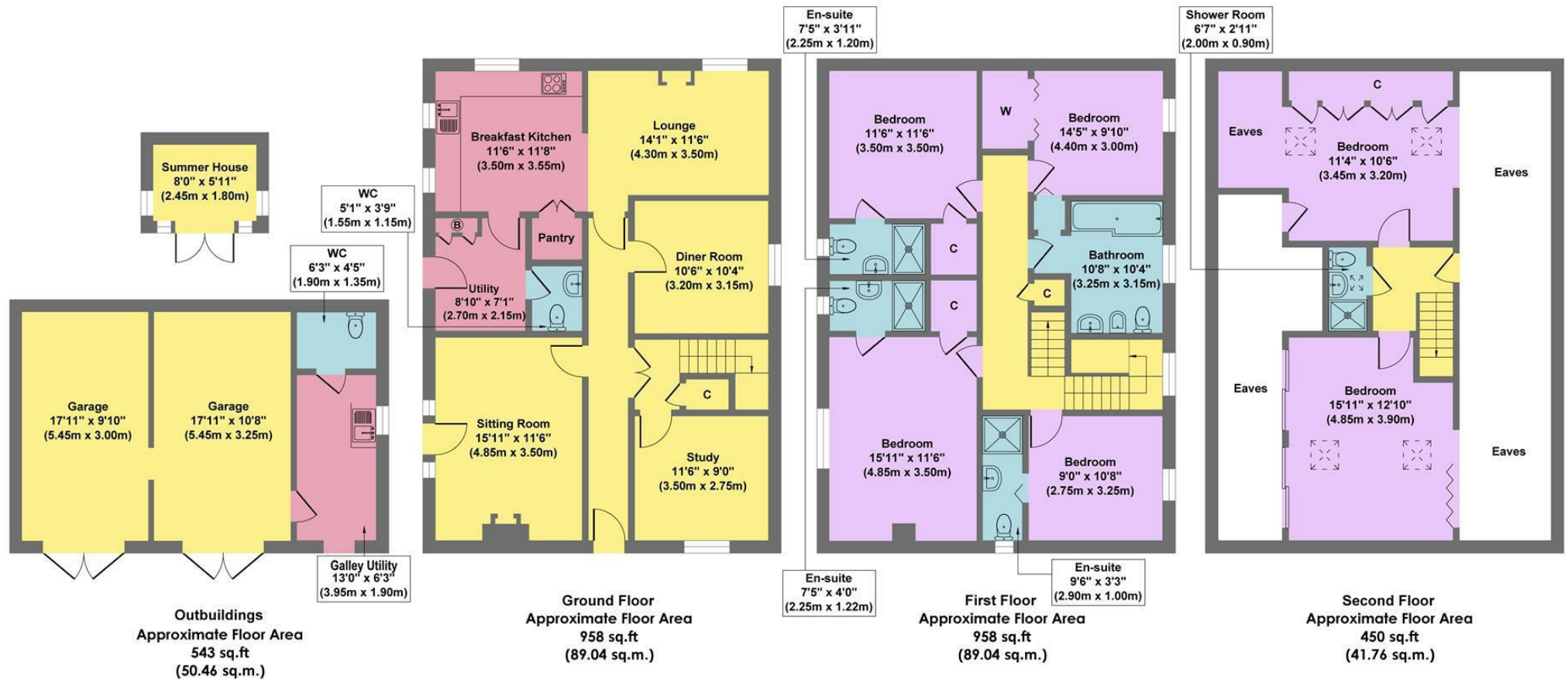
No Upward Chain



- Peaceful Village Setting
- Excellent Local Amenities
- Flexible Family Home
- Double Garage & Off Road Parking For Several Vehicles
- Potential To Convert The Garage To An Annex For A Dependent Relative
- Direct Access To A Wealth Of Outdoor Pursuits
- Contents By Separate Negotiation
- EPC: D
- Viewings: Bakewell Office



Merman Barn



Approx. Gross Internal Floor Area 2909 sq.ft / 270.30 sq.m

Illustration for identification purposes only, measurements are approximate, not to scale

While we endeavour to make our sales particulars fair, accurate and reliable, they are only a general guide to the property and, accordingly, if there is any point, which is of particular importance to you, please contact the relevant office. The Agents have not tested any apparatus, equipment, fittings or services and so cannot verify they are in working order. The buyer is advised to obtain verification. Please note all the measurement details are approximate and should not be relied upon as exact. All plans, floor plans and maps are for guidance purposes only and are not to scale. Under no circumstances should they be relied upon as exact or for use in planning carpets and other such fixtures, fittings or furnishings. YOUR HOME IS AT RISK IF YOU DO NOT KEEP UP REPAYMENTS ON A MORTGAGE OR OTHER LOAN SECURED ON IT. 'A Life Assurance policy may be requested.' 'Written Quotations of credit terms available on request.'

Banner Cross
T: 0114 268 3241
E: bannercross@saxtonmee.co.uk
www.saxtonmee.co.uk

Hathersage
T: 01433 650009
E: hathersage@saxtonmee.co.uk

Bakewell
T: 01629 815307
E: bakewell@saxtonmee.co.uk

Matlock
T: 01629 828250
E: matlock@saxtonmee.co.uk

Saxton Mee