



2 Devonshire Square, Beeley, Matlock, Derbyshire, DE4 2NZ



2 Devonshire Square

Beeley

£500,000

Nestled in the heart of the historic village of Beeley, this enchanting two-bedroom stone-built cottage offers a rare opportunity to own a home in an idyllic Peak District setting. With the majority of the village owned by the Chatsworth Estate, privately-owned properties like this are seldom available. With its charming traditional design overlooking the award-winning Devonshire Arms public house and is surrounded by breathtaking countryside.

£500,000- £550,000 Guide Price.

This delightful home exudes character, from its stone mullioned windows with Thomas Sanderson shutters, to the gritstone fireplace housing a log-burning stove in the sitting room. The cottage is filled with original period features, complemented by tasteful modern fittings and a recently installed Viessmann boiler.

The ground floor includes a wood panelled inner lobby leading to a welcoming dual aspect sitting room with exposed beams, a window seat and a gritstone fireplace housing a log burning stove. A beautifully fitted kitchen with a range of appliances and units with granite work surface, which leads to the dual aspect dining room with a stable style door leading to the rear garden.

Upstairs, the landing leads to a dual aspect double bedroom with a window seat, a second double bedroom and a luxurious bathroom.

With its pretty easily managed garden with gravel beds and meandering pathway leading to the seating terrace to enjoy the view. A further courtyard garden and two useful stores.

A driveway provides off road parking.

With no upward chain and its unique location on the edge of the Chatsworth Estate, this home is a true gem.

Previously featured in Ideal Home magazine, it captures the essence of country living in one of Derbyshire's most desirable villages.

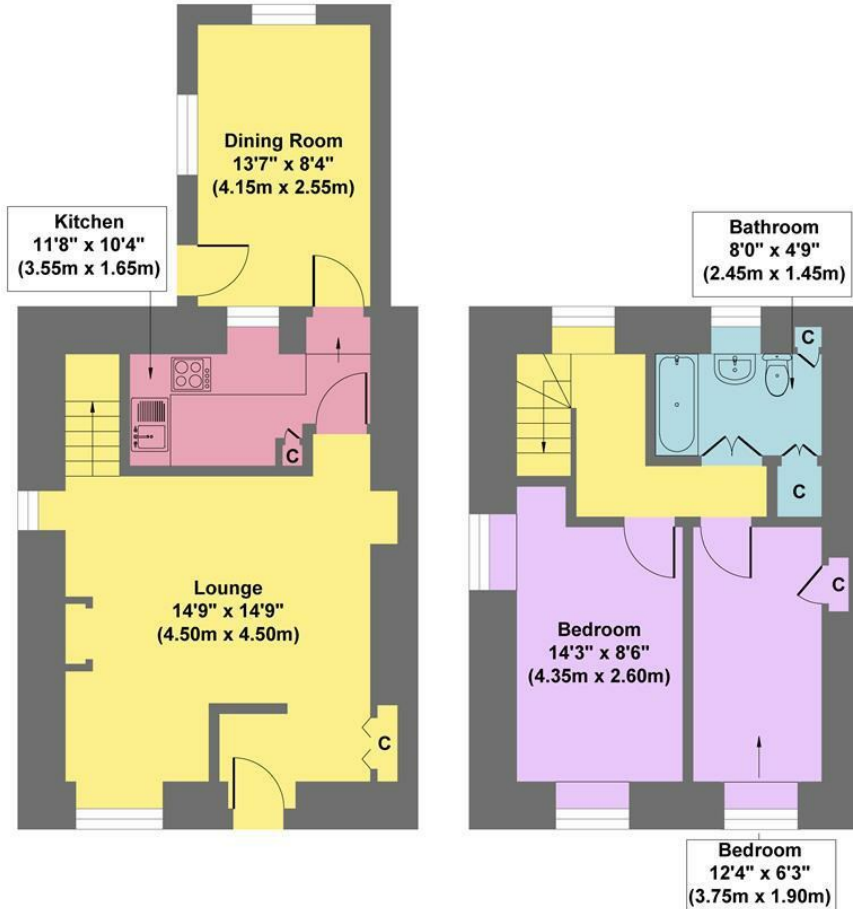


- A Chocolate Box Cottage Brimming With Character Features
- Idyllic Derbyshire Village
- On The Edge Of The Chatsworth Country Estate
- Direct Access To A Wealth Of Outdoor Pursuits
- Charming Gardens & A Stone Store
- Immaculately Presented Throughout & Completed To An Exceptionally High Standard
- Off Road Parking
- Contents By Separate Negotiation & No Upward Chain
- EPC: TBC
- Viewings: Bakewell Office





2 Devonshire Square



Ground Floor
Approximate Floor Area
461 sq.ft
(42.83 sq.m.)

First Floor
Approximate Floor Area
308 sq.ft
(28.66 sq.m.)

Approx. Gross Internal Floor Area 769 sq.ft / 71.49 sq.m

Illustration for identification purposes only, measurements are approximate, not to scale

While we endeavour to make our sales particulars fair, accurate and reliable, they are only a general guide to the property and, accordingly, if there is any point, which is of particular importance to you, please contact the relevant office. The Agents have not tested any apparatus, equipment, fittings or services and so cannot verify they are in working order. The buyer is advised to obtain verification. Please note all the measurement details are approximate and should not be relied upon as exact. All plans, floor plans and maps are for guidance purposes only and are not to scale. Under no circumstances should they be relied upon as exact or for use in planning carpets and other such fixtures, fittings or furnishings. YOUR HOME IS AT RISK IF YOU DO NOT KEEP UP REPAYMENTS ON A MORTGAGE OR OTHER LOAN SECURED ON IT. 'A Life Assurance policy may be requested.' 'Written Quotations of credit terms available on request.'

Banner Cross
T: 0114 268 3241
E: bannercross@saxtonmee.co.uk
www.saxtonmee.co.uk

Hathersage
T: 01433 650009
E: hathersage@saxtonmee.co.uk

Bakewell
T: 01629 815307
E: bakewell@saxtonmee.co.uk

Matlock
T: 01629 828250
E: matlock@saxtonmee.co.uk

