



4 Royal Croft Drive, Baslow, Derbyshire, DE45 1SN

Saxton Mee

4 Royal Croft Drive

Baslow

Guide Price

£725,000

This spacious and well-positioned bungalow is located in a highly desirable area of Baslow, nestled within an exclusive cul-de-sac & set on a prime South-Westerly facing plot with stunning open views both to the front and rear.

£725,000 - £750,000 Guide Price

Baslow, a charming Peak District village on the edge of the Chatsworth Country Estate, is surrounded by breathtaking Derbyshire countryside, offering easy access to scenic walks & numerous outdoor activities. The village itself boasts a variety of local amenities, including shops, a Post Office, country inns, restaurants & a primary school, all while being conveniently close to Bakewell, Sheffield & Chesterfield.

The beautifully maintained & presented property provides light & airy living spaces that are both spacious & versatile. Upon entering, a hallway complete with a built-in storage cupboard & WC.

A generously sized sitting room, which features a striking curved window & a fireplace. This room seamlessly flows into the dining room, where doors open onto a decked seating terrace, perfect for enjoying the outdoors. The adjacent fitted kitchen is equipped with a range of units, granite worktops & integrated appliances, with convenient access to the integral garage.

The bungalow offers two double bedrooms. The master bedroom with built-in wardrobes provides direct access to a large, 'Jack & Jill' wet room, which can also be accessed from the third bedroom. Additionally, the second double bedroom has an adjoining shower room, completing the accommodation.

Externally, the property features a double-width driveway offering ample off-road parking, leading to the attached garage & an attractive front garden.

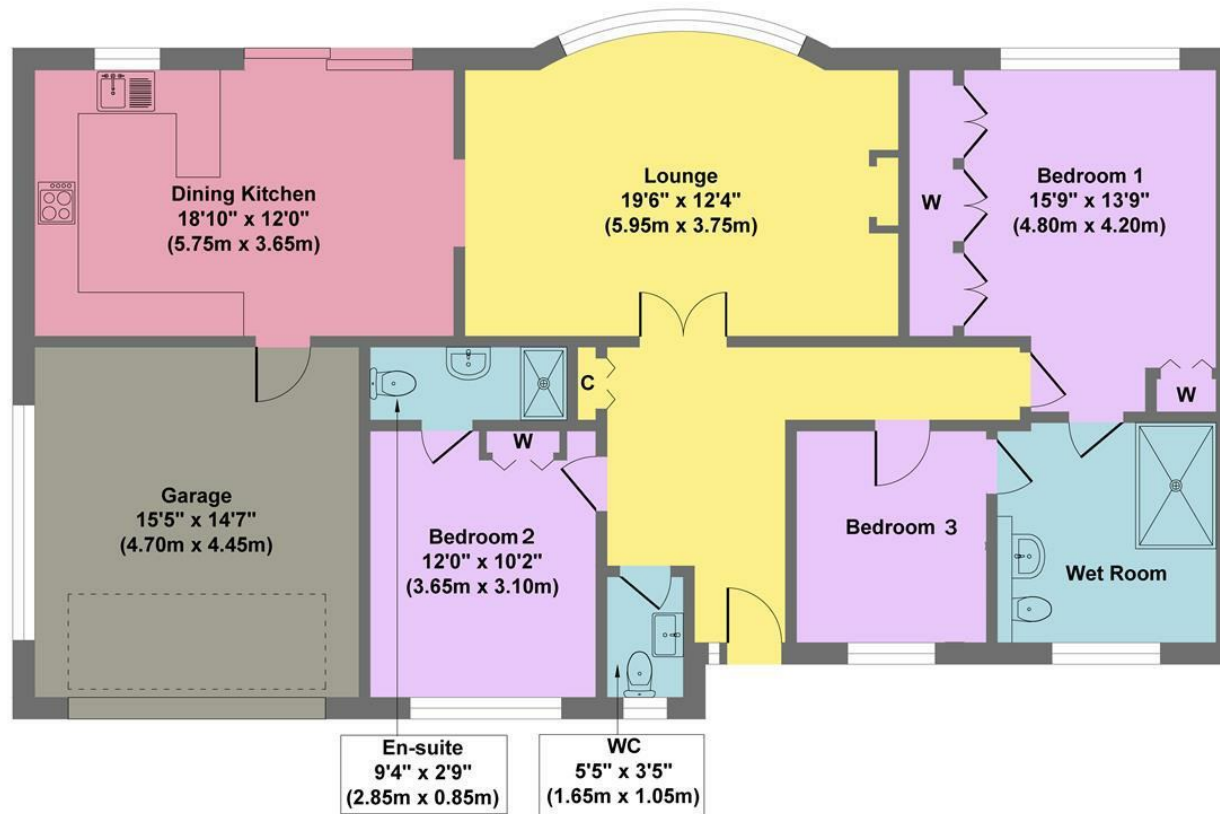
The rear of the property is a standout, with a large decked balcony featuring a glazed balustrade, offering lovely South-Westerly views over the Hunting Tower and Chatsworth Estate. The garden is beautifully landscaped for easy maintenance, creating a peaceful outdoor retreat. No Upward Chain.



- Luxury Three Bedroom Detached Bungalow
- Well Presented Throughout With An Air Con System That Both Heats & Cools.
- Stunning Bay Windowed Sitting Room
- Direct Access To Many Local Walks & Outdoor Pursuits
- Integral Garage & Off Road Parking
- Sought After Cul-De-Sac & Set In A Prime Position
- Beautiful Gardens, South Westerly Facing To The Rear With Exceptional Views
- Baslow Has An Excellent Range Of Amenities
- EPC: TBC
- Viewings: Bakewell Office



4 Royal Croft Drive



Ground Floor
Approximate Floor Area
1470 sq.ft
(136.61 sq.m.)

Approx. Gross Internal Floor Area 1470 sq.ft / 136.61 sq.m

Illustration for identification purposes only, measurements are approximate, not to scale

While we endeavour to make our sales particulars fair, accurate and reliable, they are only a general guide to the property and, accordingly, if there is any point, which is of particular importance to you, please contact the relevant office. The Agents have not tested any apparatus, equipment, fittings or services and so cannot verify they are in working order. The buyer is advised to obtain verification. Please note all the measurement details are approximate and should not be relied upon as exact. All plans, floor plans and maps are for guidance purposes only and are not to scale. Under no circumstances should they be relied upon as exact or for use in planning carpets and other such fixtures, fittings or furnishings. YOUR HOME IS AT RISK IF YOU DO NOT KEEP UP REPAYMENTS ON A MORTGAGE OR OTHER LOAN SECURED ON IT. 'A Life Assurance policy may be requested.' 'Written Quotations of credit terms available on request.'

Banner Cross
T: 0114 268 3241
E: bannercross@saxtonmee.co.uk
www.saxtonmee.co.uk

Hathersage
T: 01433 650009
E: hathersage@saxtonmee.co.uk

Bakewell
T: 01629 815307
E: bakewell@saxtonmee.co.uk

Matlock
T: 01629 828250
E: matlock@saxtonmee.co.uk

