



4 Hillmorton The Dukes Drive, Ashford-In-The-Water, Derbyshire, DE45

Saxton Mee

4 Hillmorton The Dukes Drive

Offers In The Region Of

£325,000

This beautifully renovated three-bedroom mid-terrace cottage offers an inviting blend of modern comfort and traditional charm, nestled in a sought-after residential area on the edge of Ashford in the Water. Set in the heart of the breathtaking Peak District National Park, it provides a perfect retreat with easy access to the stunning Derbyshire countryside. The property is conveniently close to local shops and amenities, while also falling within the catchment area for Lady Manners School, making it ideal for families. With Sheffield, Chesterfield, and Manchester just a short commute away, it strikes an excellent balance between rural serenity and urban accessibility.

As you enter, you're greeted by an entrance lobby that flows into a spacious sitting room, complete with a feature fireplace. The sitting room seamlessly transitions into a dining area, enhanced by additional storage. The fitted kitchen includes a range of units and appliances.

Upstairs, you'll find three well-proportioned bedrooms along with a family bathroom.

An area of lawn to the front of the property. The easily managed rear garden provides a tranquil outdoor space for relaxation or entertaining, while off-road parking adds to the convenience. A useful exterior store completes the property, offering additional storage options.

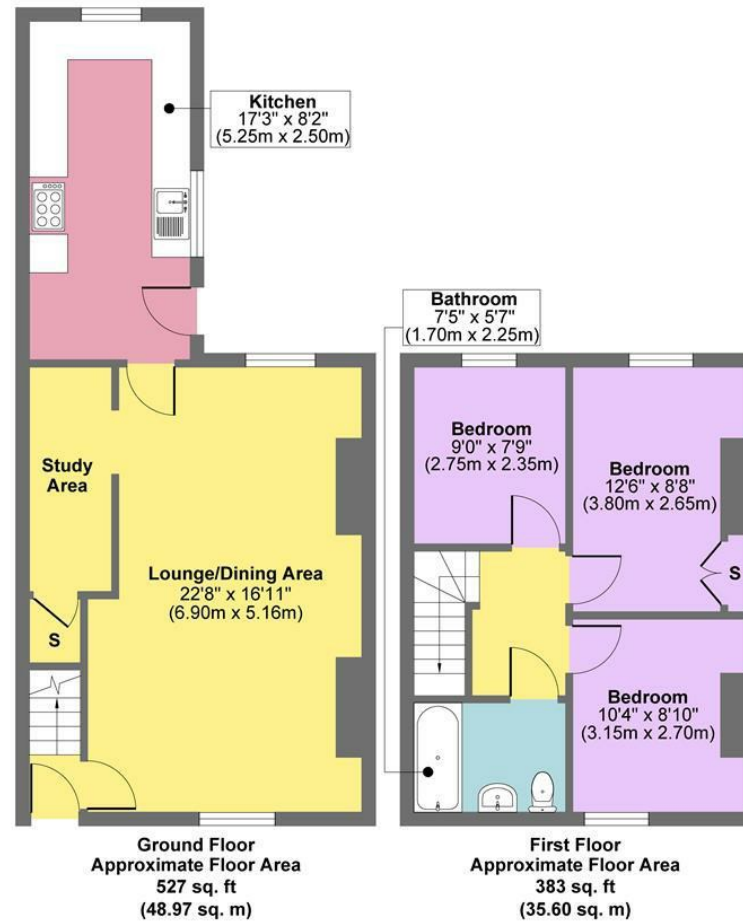
Whether you're looking for a primary residence or a holiday cottage, this delightful home is sure to impress, surrounded by the picturesque landscapes and numerous outdoor activities that the Peak District has to offer.



- Charming Setting On The Edge Of An Idyllic Village
- Fully Renovated Throughout
- Off Road Parking Space
- Easily Managed Rear Garden & Exterior Store
- Currently Run As Successful Holiday Let
- Lady Manners School Catchment
- No Upward Chain
- Feature Fireplace With Gas Stove
- EPC D
- Viewings: Bakewell Office



4 Hillmorton



Approx. Gross Internal Floor Area 910 sq. ft / 84.58 sq. m

Illustration for identification purposes only, measurements are approximate, not to scale.
Produced by Elements Property

While we endeavour to make our sales particulars fair, accurate and reliable, they are only a general guide to the property and, accordingly, if there is any point, which is of particular importance to you, please contact the relevant office. The Agents have not tested any apparatus, equipment, fittings or services and so cannot verify they are in working order. The buyer is advised to obtain verification. Please note all the measurement details are approximate and should not be relied upon as exact. All plans, floor plans and maps are for guidance purposes only and are not to scale. Under no circumstances should they be relied upon as exact or for use in planning carpets and other such fixtures, fittings or furnishings. YOUR HOME IS AT RISK IF YOU DO NOT KEEP UP REPAYMENTS ON A MORTGAGE OR OTHER LOAN SECURED ON IT. 'A Life Assurance policy may be requested.' 'Written Quotations of credit terms available on request.'

Banner Cross
T: 0114 268 3241
E: bannercross@saxtonmee.co.uk
www.saxtonmee.co.uk

Hathersage
T: 01433 650009
E: hathersage@saxtonmee.co.uk

Bakewell
T: 01629 815307
E: bakewell@saxtonmee.co.uk

Matlock
T: 01629 828250
E: matlock@saxtonmee.co.uk

