



The Ryles Old Dam, Peak Forest, Derbyshire, SK17 8EN

Saxton Mee

# The Ryles Old Dam

## Peak Forest

Guide Price

# £500,000

Spectacular Countryside Views

GUIDE PRICE £500,000-£525,000

A charming rural village nestled in the hills of the White Peak hosts this spacious three-bedroom detached bungalow. The property occupies a spectacular position with superb panoramic south-facing views over the village and surrounding Derbyshire countryside, offering a wealth of outdoor pursuits. Situated in a peaceful setting, it is within easy commuting distance of Bakewell, Buxton, Manchester, and the adjoining Peak District villages.

The flexible living accommodation includes an entrance porch/utility room with access to the integral garage. An inner hallway leads to the well-proportioned fitted kitchen and a dual-aspect sitting room with an open fire. The bungalow features three bedrooms and a shower room.

The driveway provides off-road parking for several vehicles and leads to the garage. Additionally, there are two workshops/stores at the rear of the property.

The large south-facing front garden and a generous rear garden, which adjoins countryside, enhance the home's appeal.

The property is offered with no upward chain.

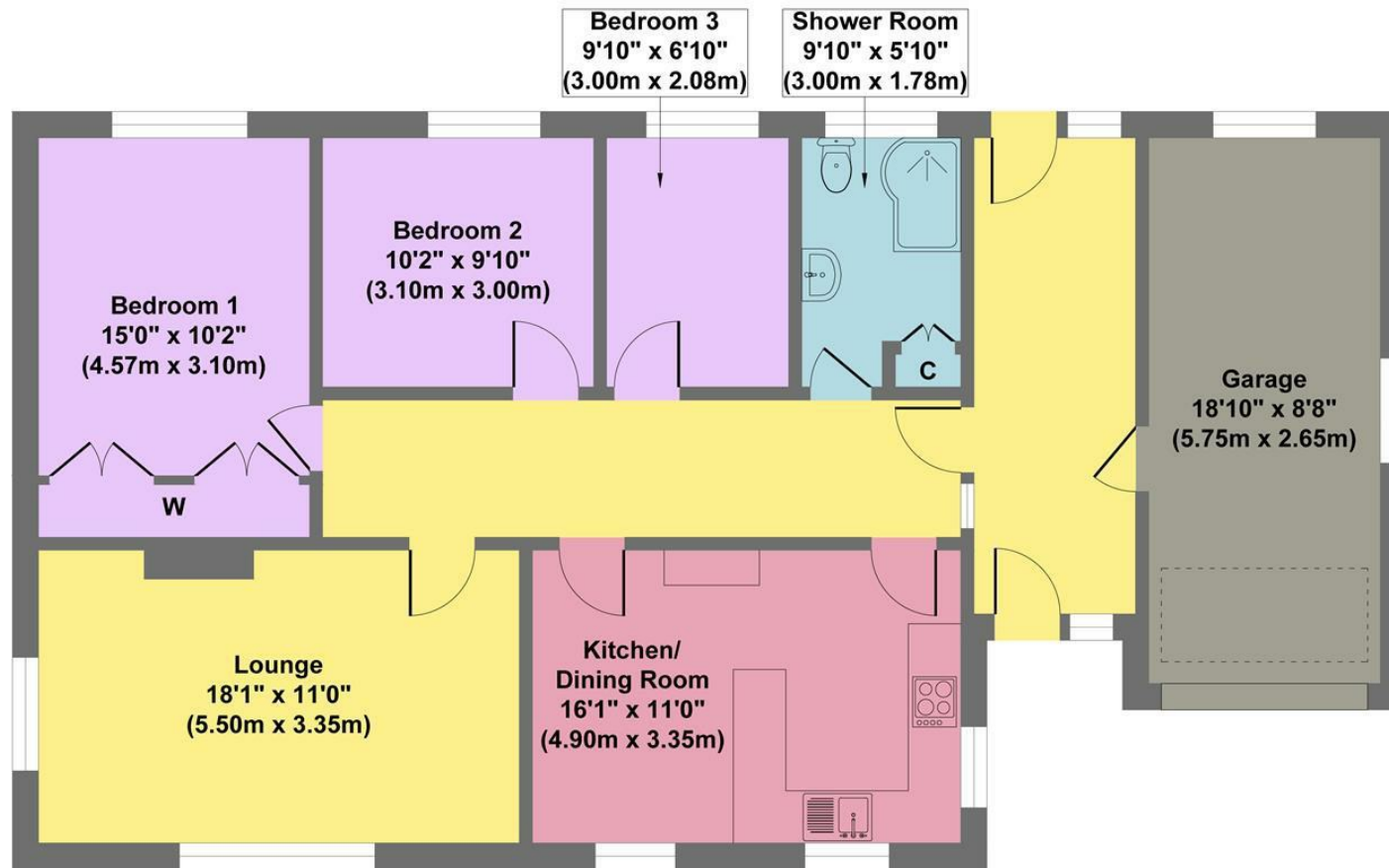


- Breathtaking Views Across Impressive Derbyshire Countryside
- Integral Garage & Generous Off Road Parking
- Two Large Workshops/Stores
- Offers Scope To Enlarge Or Complete To Individual Specifications
- Easy Commutable Distance Of Major Commercial Centres
- Spacious & Flexible living Accommodation
- Within Highly Regarded School Catchment
- Attractive Front & Rear Gardens
- EPC: D
- Viewings: Bakewell Office





# The Ryles



Approximate Floor Area  
1221 sq.ft  
(113.40 sq.m.)

**Approx. Gross Internal Floor Area 1221 sq.ft / 113.40 sq.m**

Illustration for identification purposes only, measurements are approximate, not to scale

While we endeavour to make our sales particulars fair, accurate and reliable, they are only a general guide to the property and, accordingly, if there is any point, which is of particular importance to you, please contact the relevant office. The Agents have not tested any apparatus, equipment, fittings or services and so cannot verify they are in working order. The buyer is advised to obtain verification. Please note all the measurement details are approximate and should not be relied upon as exact. All plans, floor plans and maps are for guidance purposes only and are not to scale. Under no circumstances should they be relied upon as exact or for use in planning carpets and other such fixtures, fittings or furnishings. YOUR HOME IS AT RISK IF YOU DO NOT KEEP UP REPAYMENTS ON A MORTGAGE OR OTHER LOAN SECURED ON IT. 'A Life Assurance policy may be requested.' 'Written Quotations of credit terms available on request.'

Banner Cross  
T: 0114 268 3241  
E: [bannercross@saxtonmee.co.uk](mailto:bannercross@saxtonmee.co.uk)  
[www.saxtonmee.co.uk](http://www.saxtonmee.co.uk)

Hathersage  
T: 01433 650009  
E: [hathersage@saxtonmee.co.uk](mailto:hathersage@saxtonmee.co.uk)

Bakewell  
T: 01629 815307  
E: [bakewell@saxtonmee.co.uk](mailto:bakewell@saxtonmee.co.uk)

Matlock  
T: 01629 828250  
E: [matlock@saxtonmee.co.uk](mailto:matlock@saxtonmee.co.uk)

