



15 Yeld Close, Bakewell, DE45 1FX



15 Yeld Close

Offers In The Region Of

£250,000

Nestled in the heart of the picturesque Peak District village, this charming three-bedroom mid-terrace property offers an attached garage and low-maintenance gardens, it is situated in a popular residential area within the highly coveted market town of Bakewell.

Convenience is at your doorstep with a diverse range of local amenities including shops, cafes, and leisure facilities nearby. Families will appreciate its proximity to esteemed schools, while outdoor enthusiasts will revel in the stunning Derbyshire countryside that surrounds the area, offering a wealth of outdoor activities.

Featuring gas central heating and double glazing throughout, the property comprises a front entrance porch leading to a hallway. A sitting room with double doors opens into the dining room and an adjoining fitted kitchen. Additionally, a small garden room and WC add to the functionality of the ground floor.

Upstairs, a landing leads to two double bedrooms, a bathroom, and an additional bedroom, offering versatile living space to suit your needs.

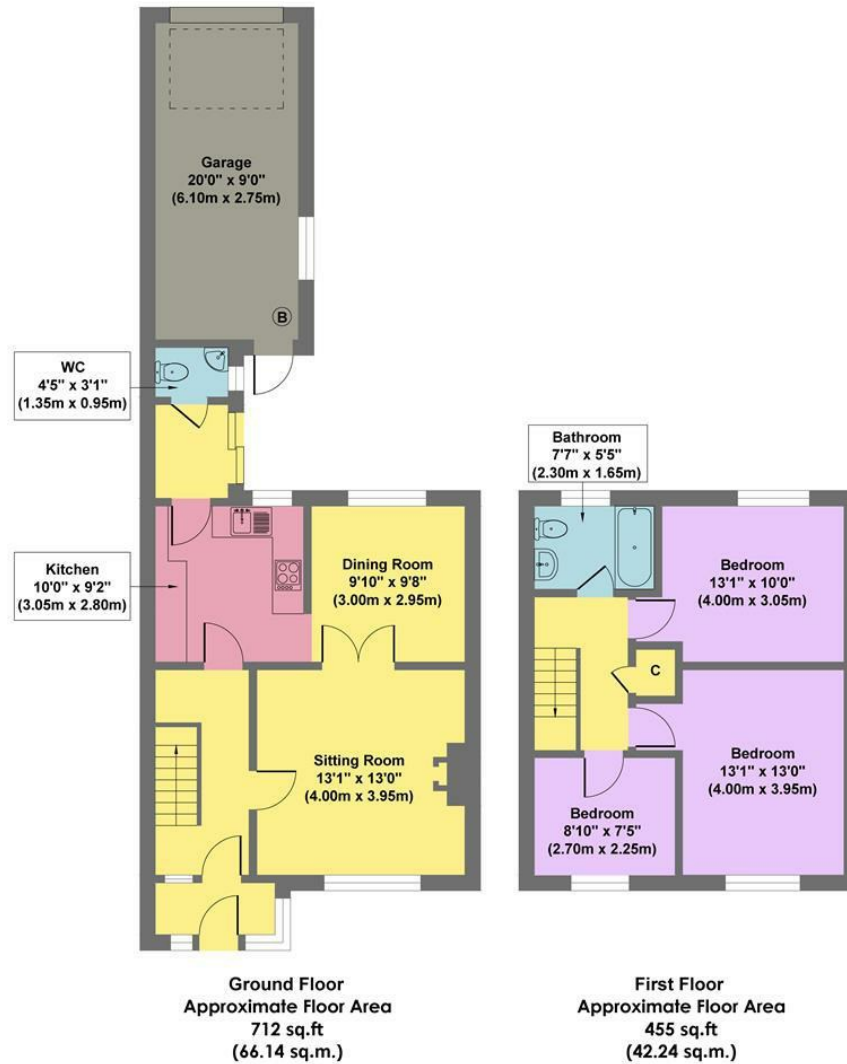
Externally, the property boasts an attached garage and easily maintained gardens, perfect for relaxing or entertaining outdoors. Please note that a local occupancy clause applies, and the property is offered with no upward chain.

- Popular Peak District Setting
- Close To An Excellent Range Of Amenities
- Peaceful Residential Setting
- A Local Occupancy Clause Applies
- Scope To Complete To Individual Specifications
- Within Lady Manners School Catchment
- Garage
- No Upward Chain
- EPC: TBC
- Viewings: Bakewell Office





15 Yeld Close



Approx. Gross Internal Floor Area 1167 sq.ft / 108.38 sq.m

Illustration for identification purposes only, measurements are approximate, not to scale

While we endeavour to make our sales particulars fair, accurate and reliable, they are only a general guide to the property and, accordingly, if there is any point, which is of particular importance to you, please contact the relevant office. The Agents have not tested any apparatus, equipment, fittings or services and so cannot verify they are in working order. The buyer is advised to obtain verification. Please note all the measurement details are approximate and should not be relied upon as exact. All plans, floor plans and maps are for guidance purposes only and are not to scale. Under no circumstances should they be relied upon as exact or for use in planning carpets and other such fixtures, fittings or furnishings. YOUR HOME IS AT RISK IF YOU DO NOT KEEP UP REPAYMENTS ON A MORTGAGE OR OTHER LOAN SECURED ON IT. 'A Life Assurance policy may be requested.' 'Written Quotations of credit terms available on request.'

Banner Cross
T: 0114 268 3241
E: bannercross@saxtonmee.co.uk
www.saxtonmee.co.uk

Hathersage
T: 01433 650009
E: hathersage@saxtonmee.co.uk

Bakewell
T: 01629 815307
E: bakewell@saxtonmee.co.uk

Matlock
T: 01629 828250
E: matlock@saxtonmee.co.uk

