



Chalice Cottage, Church Alley, Bakewell, Derbyshire, DE45 1FF

Saxton Mee

# Church Alley

Offers Over

## £250,000

Centrally Positioned With Attractive Views.

£250,000 - £265,000 Guide Price.

This charming traditional Derbyshire cottage, centrally positioned in historic Bakewell, offers a cozy retreat with modern amenities. Currently operating as a successful holiday let, this two-bedroom character cottage is brimming with original features, including exposed beams and an open fire, creating a warm and inviting atmosphere.

Nestled in the heart of Bakewell with easy access to an extensive range of shops, cafes, country inns, and restaurants. Surrounded by the picturesque Peak Park countryside, outdoor enthusiasts have plenty of opportunities for local walks, cycle trails, and other outdoor pursuits right at their doorstep. The cottage boasts a delightful view towards the church from the rear.

The accommodation comprises a sitting room with a gritstone fireplace and a dining kitchen with integrated appliances.

Upstairs, there are two bedrooms and a bathroom, providing comfortable living space.

Whether used as a main home or a holiday retreat, this cottage offers a quintessential Derbyshire experience in the heart of Bakewell.

To the rear of the property is a small yard and storage shed.

No upward chain and the contents are available by separate negotiation.

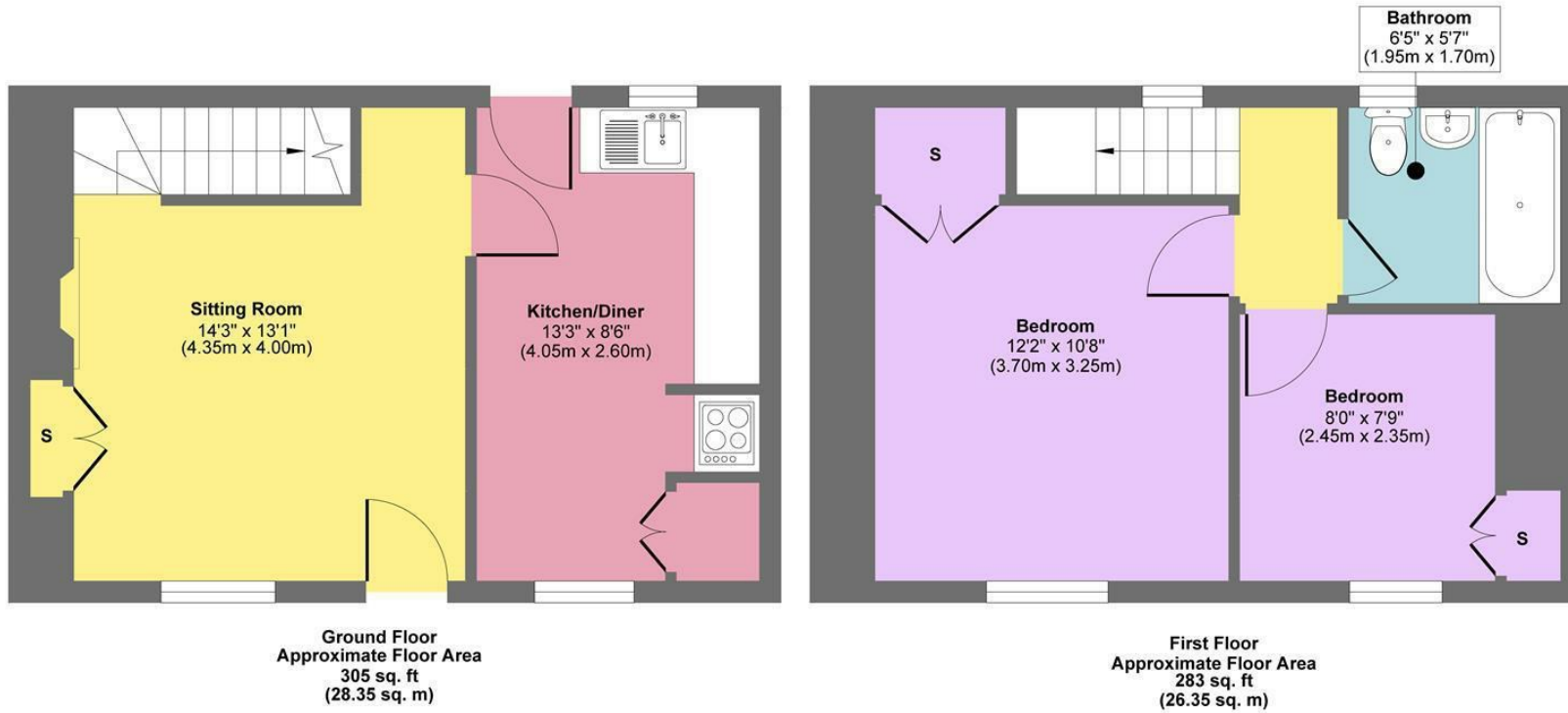


- Views Towards The Impressive Church
- Currently Run As A Successful Holiday Cottage
- Charming Features
- Centrally Positioned Within Historic Bakewell
- Close To Town Centre Amenities
- Easy Access To Local Walks And Cycle Trails
- Contents By Separate Negotiation
- No Upward Chain
- EPC: TBC
- Viewings: Bakewell Office





## Chalice Cottage



**Approx. Gross Internal Floor Area 588 sq. ft / 54.70 sq. m**

Illustration for identification purposes only, measurements are approximate, not to scale.  
Produced by Elements Property

While we endeavour to make our sales particulars fair, accurate and reliable, they are only a general guide to the property and, accordingly, if there is any point, which is of particular importance to you, please contact the relevant office. The Agents have not tested any apparatus, equipment, fittings or services and so cannot verify they are in working order. The buyer is advised to obtain verification. Please note all the measurement details are approximate and should not be relied upon as exact. All plans, floor plans and maps are for guidance purposes only and are not to scale. Under no circumstances should they be relied upon as exact or for use in planning carpets and other such fixtures, fittings or furnishings. YOUR HOME IS AT RISK IF YOU DO NOT KEEP UP REPAYMENTS ON A MORTGAGE OR OTHER LOAN SECURED ON IT. 'A Life Assurance policy may be requested.' 'Written Quotations of credit terms available on request.'

Banner Cross  
T: 0114 268 3241  
E: [bannercross@saxtonmee.co.uk](mailto:bannercross@saxtonmee.co.uk)  
[www.saxtonmee.co.uk](http://www.saxtonmee.co.uk)

Hathersage  
T: 01433 650009  
E: [hathersage@saxtonmee.co.uk](mailto:hathersage@saxtonmee.co.uk)

Bakewell  
T: 01629 815307  
E: [bakewell@saxtonmee.co.uk](mailto:bakewell@saxtonmee.co.uk)

Matlock  
T: 01629 828250  
E: [matlock@saxtonmee.co.uk](mailto:matlock@saxtonmee.co.uk)

