



Veryan, 13 Over Road, Baslow, Derbyshire, DE45 1PL

Saxton Mee

13 Over Road

Baslow

Offers In The Region Of

£630,000

A Highly Sought After Setting.

A stunning three bedroom detached bungalow with a garage, off road parking and beautiful well stocked gardens border the property.

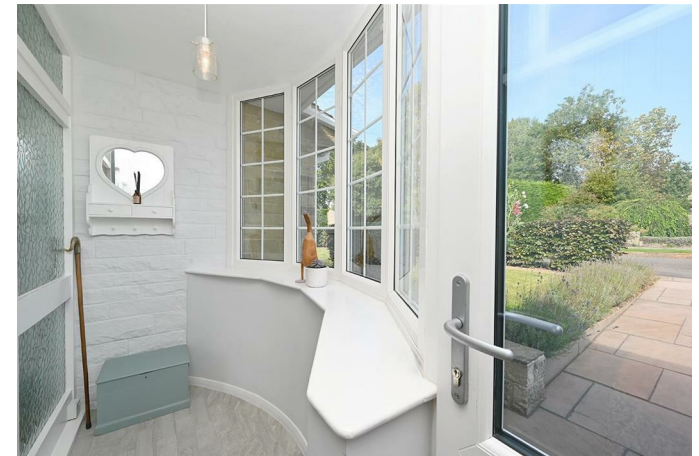
Occupying a picturesque setting in the highly sought after Peak District village of Baslow on the edge of the Chatsworth Country Estate, bordered by stunning Derbyshire countryside with access to many local walks and a wealth of outdoor pursuits. The pretty village offers local shops, a Post Office counter, country inns, restaurants and a primary school as well as being in easy reach of Bakewell, Sheffield and Chesterfield.

Fully renovated throughout to an exceptionally high standard, the spacious accommodation is light and airy and has been completed with an eye for detail. With gas central heating and double glazing the immaculately presented accommodation comprises: a curved front entrance lobby, inner hallway and WC. A fitted kitchen with a range of units and integrated appliances. A large dual aspect living room with feature fireplace opens into the large garden room/dining room. Hallway with built in storage cupboards, a double bedroom with fitted wardrobes, a bathroom, a double bedroom with fitted wardrobes and a further bedroom.

Exterior: a driveway leads to the garage and provides generous off road parking. The landscaped gardens border the property and include seating terraces, planted beds and borders. A wrought iron gate opens into a further enclosed lawned garden.

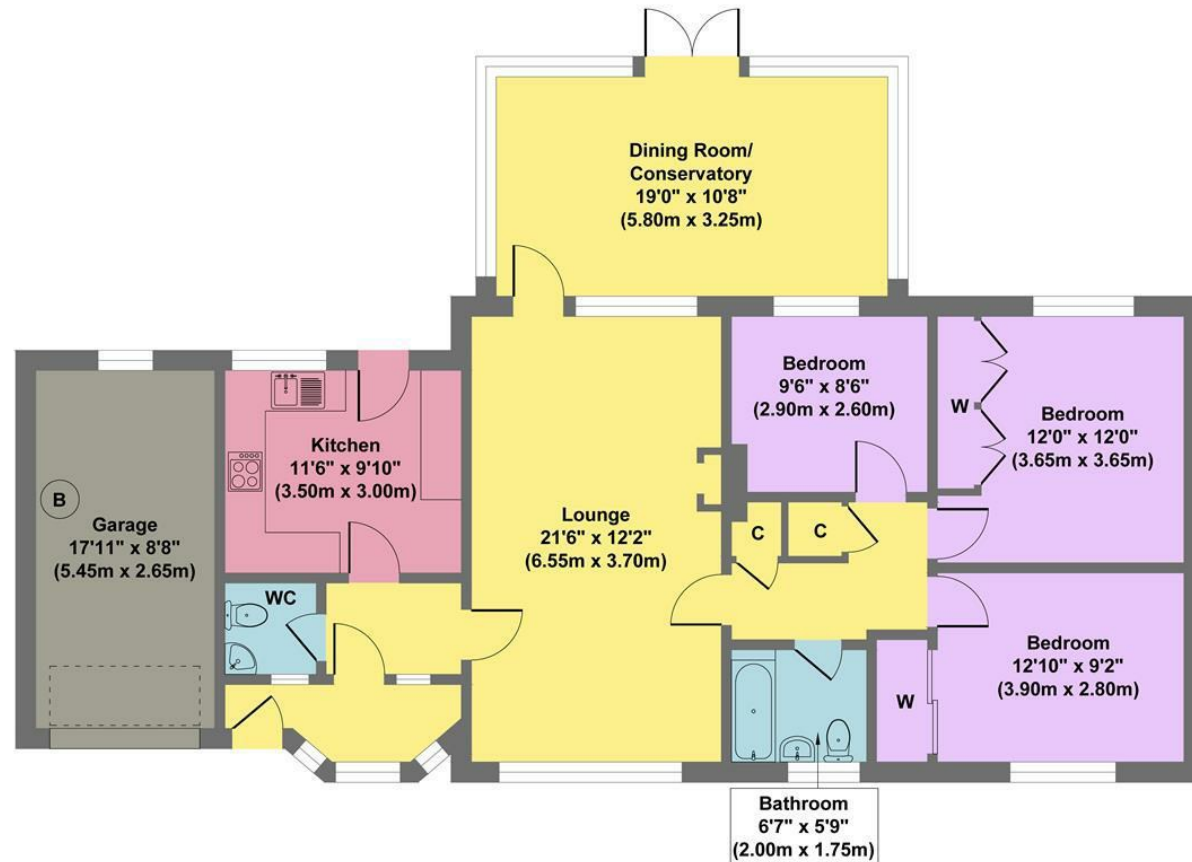


- Sought After Peak District Village
- Fully Refurbished & Immaculately Presented Throught
- Garage & Off Road Parking
- Excellent Local Amenities & Primary School
- Beautiful Generous Gardens
- Access To Many Local Walks & Cycle Trails
- Easy Commutable Distance Of Major Commercial Centres
- Peaceful Picturesque Setting
- EPC:TBC
- Viewings: Bakewell





Veryan, 13 Over Road



Approximate Floor Area
1347 sq.ft
(125.17 sq.m.)

Approx. Gross Internal Floor Area 1347 sq.ft / 125.17 sq.m

Illustration for identification purposes only, measurements are approximate, not to scale

While we endeavour to make our sales particulars fair, accurate and reliable, they are only a general guide to the property and, accordingly, if there is any point, which is of particular importance to you, please contact the relevant office. The Agents have not tested any apparatus, equipment, fittings or services and so cannot verify they are in working order. The buyer is advised to obtain verification. Please note all the measurement details are approximate and should not be relied upon as exact. All plans, floor plans and maps are for guidance purposes only and are not to scale. Under no circumstances should they be relied upon as exact or for use in planning carpets and other such fixtures, fittings or furnishings. YOUR HOME IS AT RISK IF YOU DO NOT KEEP UP REPAYMENTS ON A MORTGAGE OR OTHER LOAN SECURED ON IT. *A Life Assurance policy may be requested.* *Written Quotations of credit terms available on request.*

Banner Cross
T: 0114 268 3241
E: bannercross@saxtonmee.co.uk
www.saxtonmee.co.uk

Dronfield
T: 01246 290992
E: dronfield@saxtonmee.co.uk

Hathersage
T: 01433 650009
E: hathersage@saxtonmee.co.uk

Bakewell
T: 01629 815307
E: bakewell@saxtonmee.co.uk

Saxton Mee