



Rose Cottage, Great Hucklow, Derbyshire, SK17 8RF

Saxton Mee



# Great Hucklow

Offers In The Region Of

## £285,000

Rose Cottage in Great Hucklow is a delightful two bedroom stone-built character home, brimming with charm and period features. Set in the heart of this picturesque Peak District village, the property offers a perfect blend of traditional features and homely comfort. Inside, the cottage opens into a welcoming living and dining room with dual aspect windows. Exposed beams and stonework add a rustic elegance, while the character fireplace with a log-burning stove provides a cosy focal point. The adjoining fitted kitchen includes a range of units and space for appliances.

Upstairs, the charm continues with a light and airy dual aspect double bedroom offering wonderful views across the surrounding countryside. A second bedroom, complete with a decorative fireplace, makes an ideal guest room, study, or creative space. The bathroom is conveniently located off the landing.

Outside, the easy to manage front garden adds a welcoming touch and frames the cottage, while the superb views from the property overlook the stunning natural landscape that surrounds the village. A single garage to the rear offers useful storage options.

Great Hucklow itself is a sought-after Derbyshire village that offers a peaceful, community focused lifestyle. Nestled in the rolling hills of the Peak District, it's perfect for those who enjoy walking, cycling and exploring the great outdoors. The village has a welcoming feel, with a local pub and a strong sense of local heritage. Despite its rural feel, it's conveniently located for access to nearby towns like Bakewell and Buxton, offering the best of countryside.

With no upward chain, Rose Cottage represents a rare opportunity to step into a tranquil, characterful home in one of the Peak District's most desirable locations.



- Peaceful Village Setting With Superb Views
- Traditional Character Features
- Easily Managed Garden
- Single Garage To The Rear
- Direct Access To A Wealth Of Outdoor Pursuits
- Easy Commutable Distance Of Major Commercial Centres
- Contents By Separate Negotiation
- No Upward Chain
- EPC: E
- Viewings: Hathersage Office





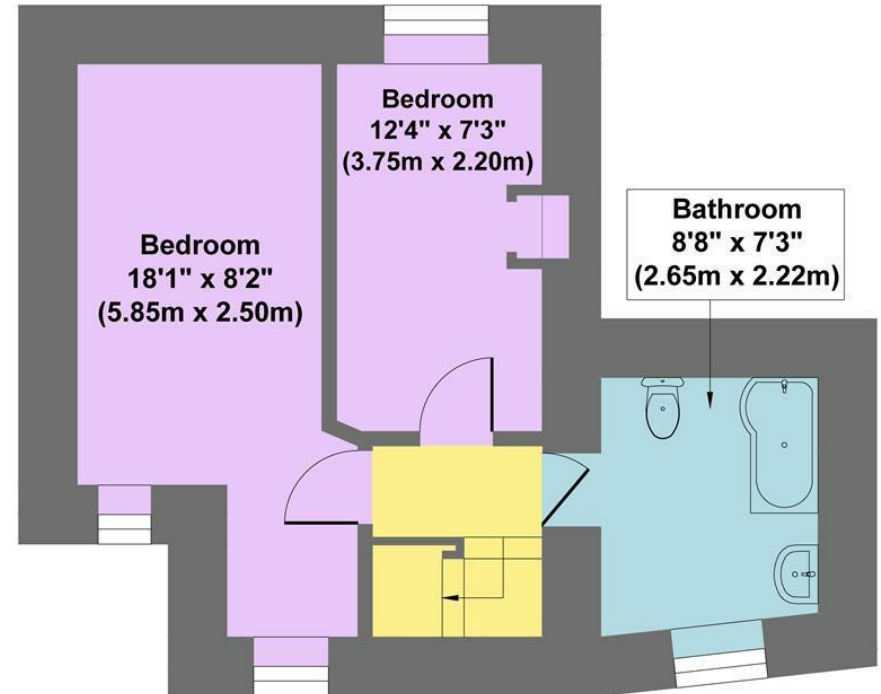




# Rose Cottage



**Ground Floor**  
**Approximate Floor Area**  
**398 sq.ft**  
**(36.95 sq.m.)**



**First Floor**  
**Approximate Floor Area**  
**351 sq.ft**  
**(32.62 sq.m.)**

**Approx. Gross Internal Floor Area 749 sq.ft / 69.57 sq.m**

Illustration for identification puposes only ,measurements are approximate, not to scale

While we endeavour to make our sales particulars fair, accurate and reliable, they are only a general guide to the property and, accordingly, if there is any point, which is of particular importance to you, please contact the relevant office. The Agents have not tested any apparatus, equipment, fittings or services and so cannot verify they are in working order. The buyer is advised to obtain verification. Please note all the measurement details are approximate and should not be relied upon as exact. All plans, floor plans and maps are for guidance purposes only and are not to scale. Under no circumstances should they be relied upon as exact or for use in planning carpets and other such fixtures, fittings or furnishings. YOUR HOME IS AT RISK IF YOU DO NOT KEEP UP REPAYMENTS ON A MORTGAGE OR OTHER LOAN SECURED ON IT. 'A Life Assurance policy may be requested.' 'Written Quotations of credit terms available on request.'

Banner Cross  
T: 0114 268 3241  
E: [bannercross@saxtonmee.co.uk](mailto:bannercross@saxtonmee.co.uk)  
[www.saxtonmee.co.uk](http://www.saxtonmee.co.uk)

Hathersage  
T: 01433 650009  
E: [hathersage@saxtonmee.co.uk](mailto:hathersage@saxtonmee.co.uk)

Bakewell  
T: 01629 815307  
E: [bakewell@saxtonmee.co.uk](mailto:bakewell@saxtonmee.co.uk)

Matlock  
T: 01629 828250  
E: [matlock@saxtonmee.co.uk](mailto:matlock@saxtonmee.co.uk)

