



Win Hill View Cottage Market Close, Hope, Derbyshire, S33 6SE

Saxton Mee

Win Hill View Cottage Market

Offers In The Region Of

£250,000

A charming semi-detached, two-bedroom stone-built property situated in the heart of the highly sought-after Hope Valley village of Hope. Enjoying impressive views towards Win Hill and the surrounding Peak District countryside, this delightful home offers a peaceful yet convenient location with direct access to many scenic walks. Local shops, amenities and train links are all within easy reach and the property is well positioned for commuting to Sheffield and Manchester.

The accommodation features a bright and airy open plan living and dining area with a triple aspect, built-in storage cupboard and a fitted kitchen. The first-floor landing leads to a double bedroom, a further bedroom and a bathroom.

Externally, the property benefits from a driveway providing off-road parking for several vehicles and an enclosed, easily maintained level garden.

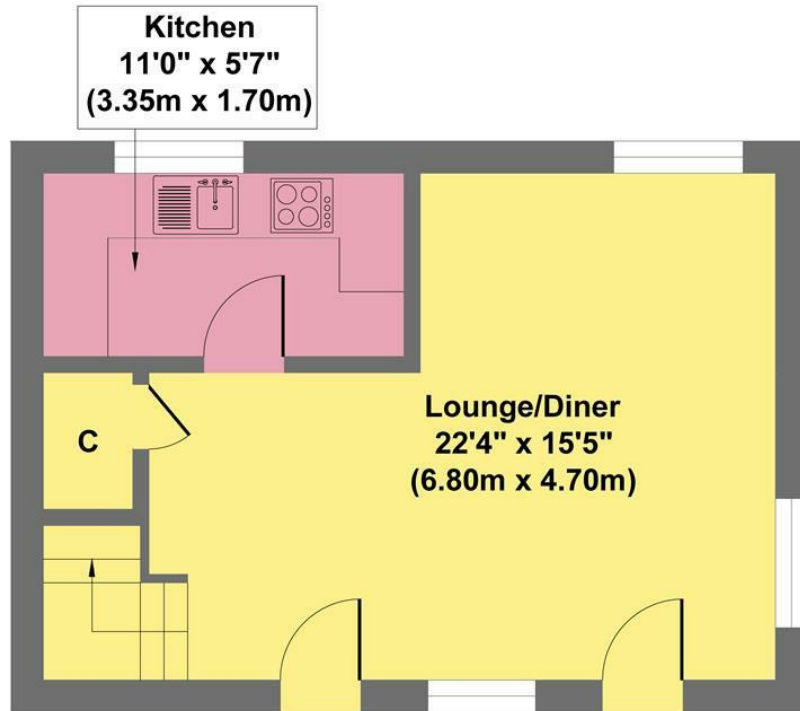
Offered to the market with no upward chain and the contents included.



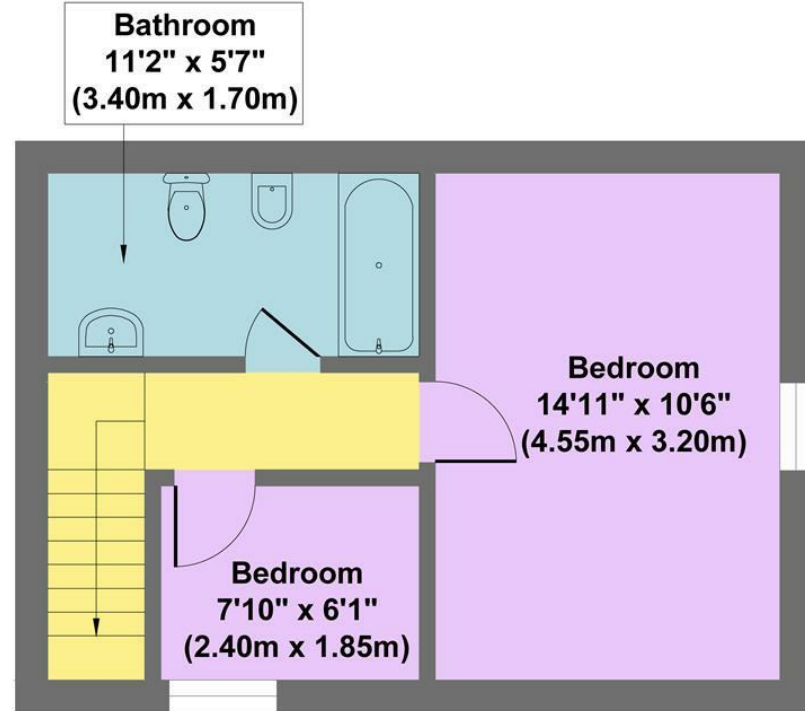
- Easy Commutable Distance Of Sheffield & Manchester
- Popular Peak District Village
- Ideal Main Home Or Holiday Let
- Off Road Parking For Several Vehicles
- Superb Views Towards Win Hill
- Direct Access To Many Local Walks
- Excellent Local Amenities
- No Upward Chain
- EPC: C
- Viewings: Hathersage Office



Win Hill View Cottage



Ground Floor
Approximate Floor Area
344 sq.ft
(31.96 sq.m.)



First Floor
Approximate Floor Area
344 sq.ft
(31.96 sq.m.)

Approx. Gross Internal Floor Area 688 sq.ft / 63.92 sq.m

Illustration for identification puposes only ,measurements are approximate, not to scale

While we endeavour to make our sales particulars fair, accurate and reliable, they are only a general guide to the property and, accordingly, if there is any point, which is of particular importance to you, please contact the relevant office. The Agents have not tested any apparatus, equipment, fittings or services and so cannot verify they are in working order. The buyer is advised to obtain verification. Please note all the measurement details are approximate and should not be relied upon as exact. All plans, floor plans and maps are for guidance purposes only and are not to scale. Under no circumstances should they be relied upon as exact or for use in planning carpets and other such fixtures, fittings or furnishings. YOUR HOME IS AT RISK IF YOU DO NOT KEEP UP REPAYMENTS ON A MORTGAGE OR OTHER LOAN SECURED ON IT. 'A Life Assurance policy may be requested.' 'Written Quotations of credit terms available on request.'

Banner Cross
T: 0114 268 3241
E: bannercross@saxtonmee.co.uk
www.saxtonmee.co.uk

Hathersage
T: 01433 650009
E: hathersage@saxtonmee.co.uk

Bakewell
T: 01629 815307
E: bakewell@saxtonmee.co.uk

Matlock
T: 01629 828250
E: matlock@saxtonmee.co.uk

