



7 Ranmoor Hill, Hathersage, Derbyshire, S32 1BU

Saxton Mee



# 7 Ranmoor Hill

Offers Around

## £425,000

TRULY BREATHTAKING VIEWS OVER THE HOPE VALLEY.

Offers around £425,000

A charming, deceptive, larger style three bedroom Derbyshire Cottage with stunning panoramic views over the Hope Valley and for sale with immediate vacant possession and NO CHAIN.

Larger than the other terraces in this location and with an old Garage, offroad parking, and fantastic long rear garden adjoining open countryside with impressive, far-reaching views over the glorious Derbyshire countryside. Nestling in the pretty village of Hathersage in the heart of the Peak District National Park in an idyllic peaceful setting with local shops, restaurants, country inns, local rail links, outdoor heated swimming pool and within commuter distance of major commercial centres.

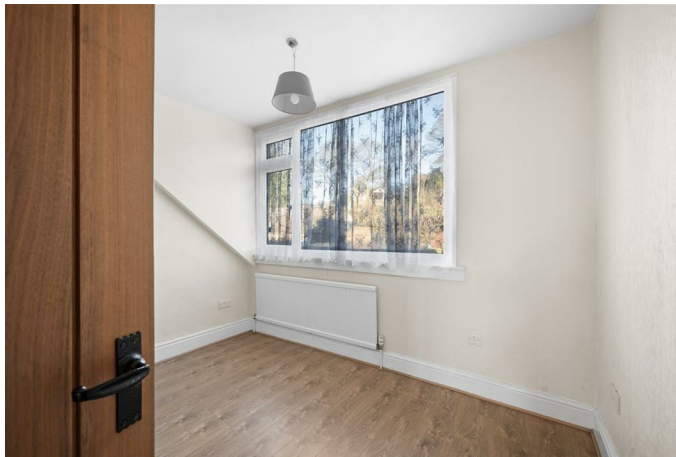
Large Dining Kitchen, good sized Living room with patio doors leading out onto a terrace with stunning views. On the first floor; two good double Bedrooms with lovely, open views, large third Bedroom, and Bathroom with full suite and separate shower.

Outside; to the front is a courtyard area with attached store places with potential to extend into. Small Garden area and also an old detached Garage and offroad parking. To the rear; lovely entertaining terrace with spectacular views and lovely long garden with greenhouse and shed, backing onto open countryside.

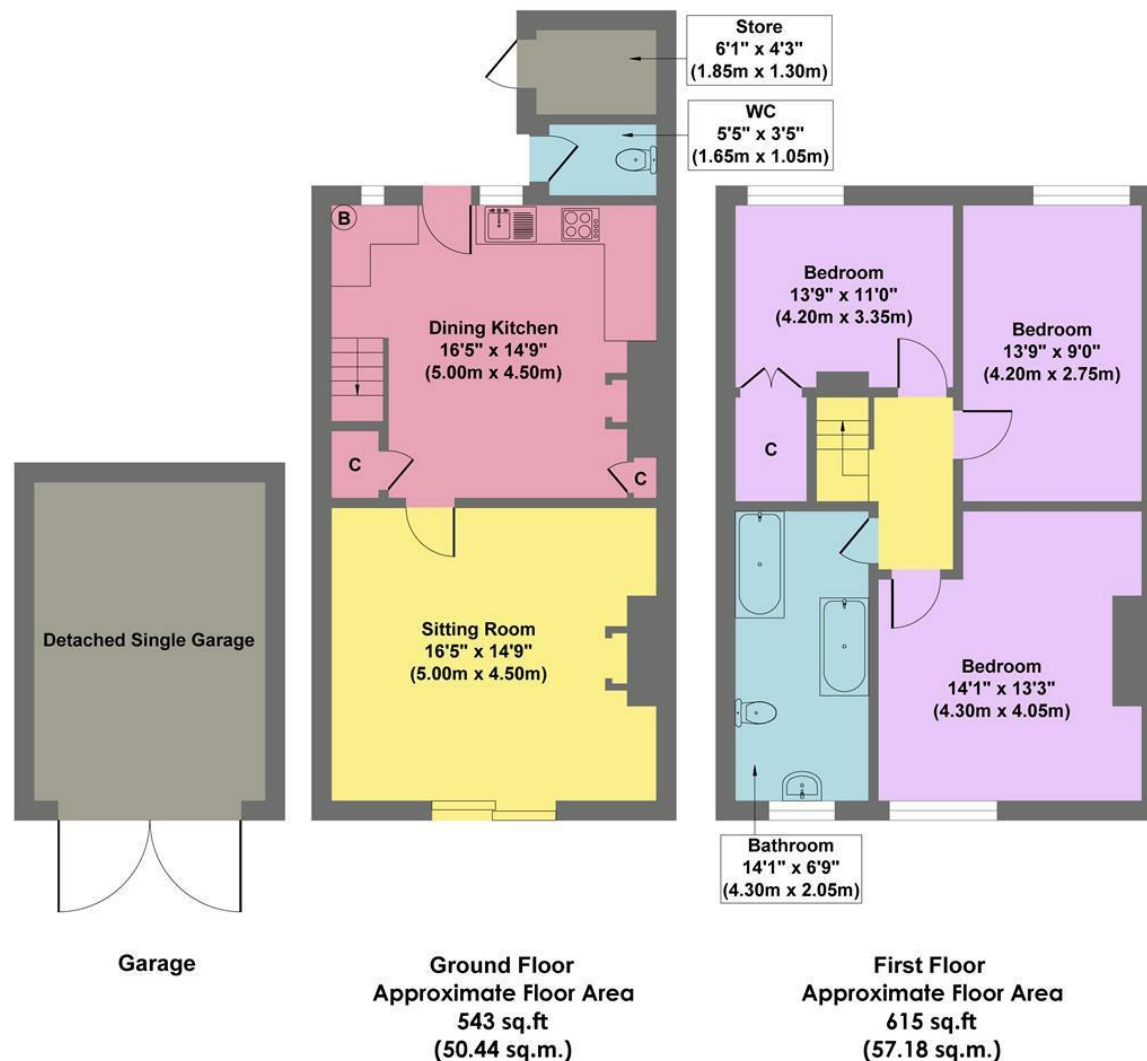


- Breathtaking Panoramic Views
- Garage and Offroad Parking
- Larger Style Accommodation with Three Bedrooms
- For Sale with Immediate Vacant Possession and NO CHAIN
- Lovely Rear Entertaining Terrace and Long Garden
- Hathersage has Excellent Village Amenities with Train Station, Outdoor Swimming Pool, Restaurants and Shops
- Unique Peaceful Picturesque Setting
- Easy Access to Many Local Walks in the Heart of the Peak District
- EPC : E
- Viewings via our Hathersage Office





## 7 Ranmoor Hill



**Approx. Gross Internal Floor Area 1158 sq.ft / 107.62 sq.m**

Illustration for identification purposes only, measurements are approximate, not to scale

While we endeavour to make our sales particulars fair, accurate and reliable, they are only a general guide to the property and, accordingly, if there is any point, which is of particular importance to you, please contact the relevant office. The Agents have not tested any apparatus, equipment, fittings or services and so cannot verify they are in working order. The buyer is advised to obtain verification. Please note all the measurement details are approximate and should not be relied upon as exact. All plans, floor plans and maps are for guidance purposes only and are not to scale. Under no circumstances should they be relied upon as exact or for use in planning carpets and other such fixtures, fittings or furnishings. YOUR HOME IS AT RISK IF YOU DO NOT KEEP UP REPAYMENTS ON A MORTGAGE OR OTHER LOAN SECURED ON IT. 'A Life Assurance policy may be requested.' 'Written Quotations of credit terms available on request.'

Banner Cross  
T: 0114 268 3241  
E: [bannercross@saxtonmee.co.uk](mailto:bannercross@saxtonmee.co.uk)  
[www.saxtonmee.co.uk](http://www.saxtonmee.co.uk)

Hathersage  
T: 01433 650009  
E: [hathersage@saxtonmee.co.uk](mailto:hathersage@saxtonmee.co.uk)

Bakewell  
T: 01629 815307  
E: [bakewell@saxtonmee.co.uk](mailto:bakewell@saxtonmee.co.uk)

Matlock  
T: 01629 828250  
E: [matlock@saxtonmee.co.uk](mailto:matlock@saxtonmee.co.uk)

