



Foundry Adventure Centre, Great Hucklow, Derbyshire, SK17 8RF





# Great Hucklow

Offers In The Region Of

## £1,200,000

Foundry Adventure Centre, situated in the charming village of Great Hucklow within the Peak District National Park, offers a remarkable opportunity for group accommodation amidst stunning natural surroundings. The centre provides flexible lodging options, accommodating either 31 or 52 guests in comfortable bunkroom-style quarters, with additional camping space for up to 30 people.

Central to the national park, the location is ideal for exploring many of the area's attractions, making it a perfect retreat for a diverse range of groups, including families, friends, schools, educational institutions, activity clubs, and corporate teams. The primary goal of Foundry Adventure Centre is to offer good, basic bunkhouse accommodation where guests can unwind and enjoy their stay, with the entire centre booked exclusively for each group.

The accommodation features a spacious lounge with a library, a wood-burning stove, a TV, and Wi-Fi, providing a cozy and relaxing environment. The fully equipped kitchen is designed for group catering, boasting two large fridges, a chest freezer, ten electric hobs, two large ovens, and steel catering surfaces. The dining area is well-appointed to serve and seat up to 60 guests comfortably.

The centre includes ample bathroom facilities with four male and four female showers in two bathrooms, each with private lockable cubicles. An additional bathroom offers two showers, two sinks, and a toilet.

The first floor houses nine bunkrooms with a total of 52 beds, ensuring plenty of space for large groups.

Situated on two acres of enclosed land, the property features grassy areas, trees, and ample car parking. Foundry Adventure Centre is an exceptional facility that combines the charm of its rural setting with practical and comfortable accommodations, making it an ideal base for various group activities and adventures in the Peak District.

No Upward Chain

The site offers scope for conversion (subject to gaining the relevant planning consents).



- A Large Plot Amounting To Approx Two Acres
- Idyllic Peak District Setting
- Currently Run As A Commercial Bunkroom Style Group Holiday Let
- Flexible Accommodation With Potential For Conversion
- Easy Reach Of Commercial Centres
- A Wealth Of Outdoor Pursuits On The Doorstep
- Close To Local Amenities
- No Upward Chain
- EPC: TBC
- Viewings: Hathersage Office

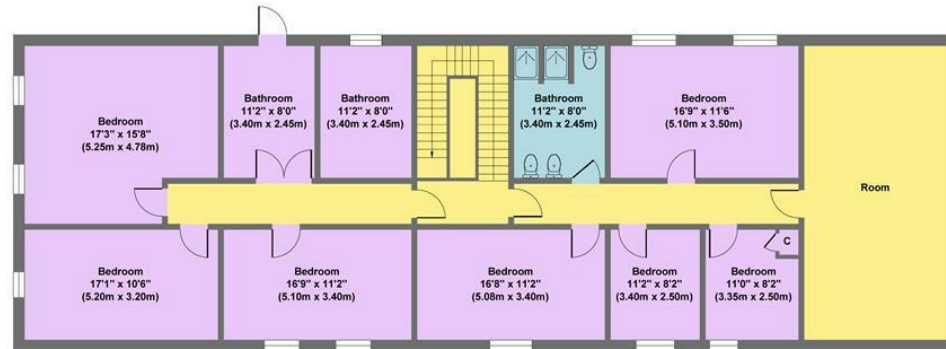








## Foundary Adventure Centre



**First Floor**  
Approximate Floor Area  
1769 sq.ft  
(164.32 sq.m.)



**Ground Floor**  
Approximate Floor Area  
3181 sq.ft  
(295.55 sq.m.)

**Approx. Gross Internal Floor Area 4950 sq.ft / 459.87 sq.m**

Illustration for identification purposes only, measurements are approximate, not to scale

While we endeavour to make our sales particulars fair, accurate and reliable, they are only a general guide to the property and, accordingly, if there is any point, which is of particular importance to you, please contact the relevant office. The Agents have not tested any apparatus, equipment, fittings or services and so cannot verify they are in working order. The buyer is advised to obtain verification. Please note all the measurement details are approximate and should not be relied upon as exact. All plans, floor plans and maps are for guidance purposes only and are not to scale. Under no circumstances should they be relied upon as exact or for use in planning carpets and other such fixtures, fittings or furnishings. YOUR HOME IS AT RISK IF YOU DO NOT KEEP UP REPAYMENTS ON A MORTGAGE OR OTHER LOAN SECURED ON IT. 'A Life Assurance policy may be requested.' 'Written Quotations of credit terms available on request.'

Banner Cross  
T: 0114 268 3241  
E: [bannercross@saxtonmee.co.uk](mailto:bannercross@saxtonmee.co.uk)  
[www.saxtonmee.co.uk](http://www.saxtonmee.co.uk)

Hathersage  
T: 01433 650009  
E: [hathersage@saxtonmee.co.uk](mailto:hathersage@saxtonmee.co.uk)

Bakewell  
T: 01629 815307  
E: [bakewell@saxtonmee.co.uk](mailto:bakewell@saxtonmee.co.uk)

Matlock  
T: 01629 828250  
E: [matlock@saxtonmee.co.uk](mailto:matlock@saxtonmee.co.uk)

