



Birdswood View Townhead, Eyam, Derbyshire, S32 5RE

Saxton Mee



# Birdswood View Townhead

Offers In The Region Of

## £580,000

This generously proportioned three-bedroom detached property is set amidst expansive gardens, featuring an attached croft, a double garage and an array of outbuildings. Situated in a peaceful and picturesque location, it offers breathtaking views over the surrounding Peak District countryside. Nestled in the sought-after village of Eyam, which is rich in local history, the property enjoys proximity to an array of local shops, cafes, country inns and a highly regarded primary school. Additionally, the village offers easy commuting access to major commercial centres, making it a perfect blend of rural tranquillity and convenience.

The spacious accommodation is thoughtfully designed, with gas central heating and double glazing. Upon entering through the rear lobby, there is a convenient WC and a useful storeroom, leading into a well-proportioned dining kitchen. The kitchen is fitted with a range of units and integrated appliances, and double doors open to the rear, seamlessly connecting indoor and outdoor spaces. The dual-aspect living room is bright and welcoming, while a further dual-aspect dining room, which could also serve as a fourth bedroom, adds versatility to the layout.

On the first floor, the property offers two double bedrooms and a third bedroom. The bathroom is equipped with both a bath and a separate shower enclosure.

Outside, the property is equally impressive. A driveway leads to the detached double garage, providing ample off-road parking for several vehicles. The large rear garden is a haven for outdoor enthusiasts, and the adjoining gated croft offers additional space for various uses. The outbuildings are a unique feature, including an equipped catering kitchen, a coal store, and additional storage space, providing potential for a range of activities or hobbies.

This property is offered with no upward chain, making it an attractive proposition for those looking to move into this historic and charming village.

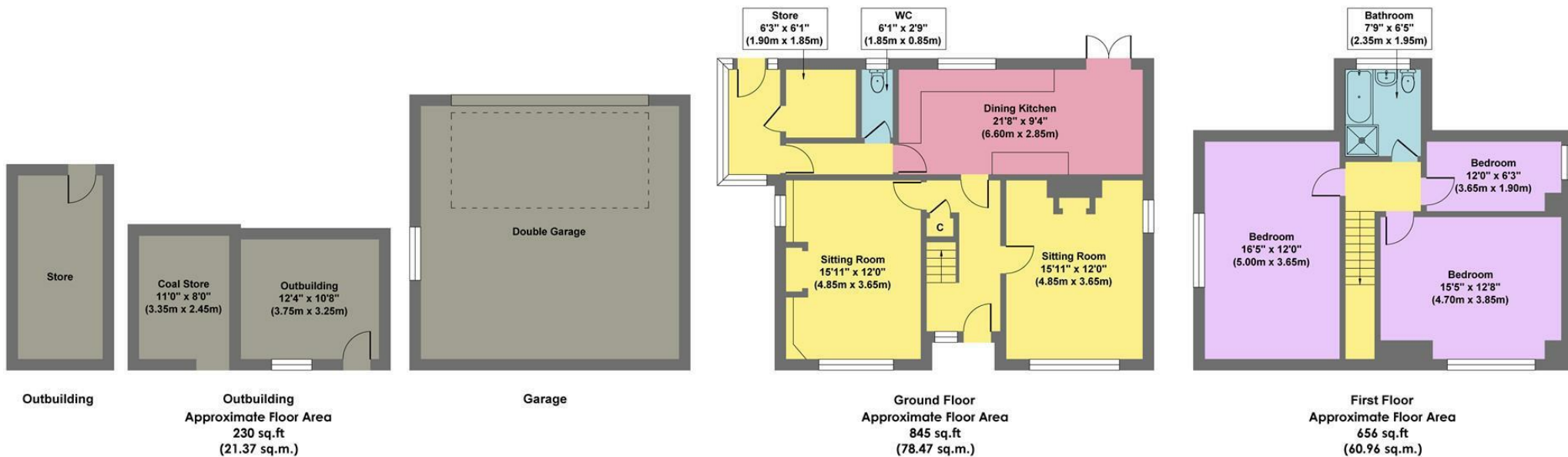


- Double Garage & Generous Off Road parking For Several Vehicles
- An Exterior Catering Kitchen & Additional Outbuildings
- Adjoining Open Countryside
- Spacious & Flexible Living Accommodation
- Generous Rear Garden & Adjoining Croft
- Excellent Local Amenities & Primary School
- Easy Commutable Distance Of Major Commercial Centres
- No Upward Chain
- EPC: E
- Viewings: Hathersage Office









**Approx. Gross Internal Floor Area 1731 sq.ft / 160.80 sq.m**

Illustration for identification puposes only ,measurements are approximate, not to scale

While we endeavour to make our sales particulars fair, accurate and reliable, they are only a general guide to the property and, accordingly, if there is any point, which is of particular importance to you, please contact the relevant office. The Agents have not tested any apparatus, equipment, fittings or services and so cannot verify they are in working order. The buyer is advised to obtain verification. Please note all the measurement details are approximate and should not be relied upon as exact. All plans, floor plans and maps are for guidance purposes only and are not to scale. Under no circumstances should they be relied upon as exact or for use in planning carpets and other such fixtures, fittings or furnishings. YOUR HOME IS AT RISK IF YOU DO NOT KEEP UP REPAYMENTS ON A MORTGAGE OR OTHER LOAN SECURED ON IT. 'A Life Assurance policy may be requested.' 'Written Quotations of credit terms available on request.'

Banner Cross  
 T: 0114 268 3241  
 E: [bannercross@saxtonmee.co.uk](mailto:bannercross@saxtonmee.co.uk)  
[www.saxtonmee.co.uk](http://www.saxtonmee.co.uk)

Hathersage  
 T: 01433 650009  
 E: [hathersage@saxtonmee.co.uk](mailto:hathersage@saxtonmee.co.uk)

Bakewell  
 T: 01629 815307  
 E: [bakewell@saxtonmee.co.uk](mailto:bakewell@saxtonmee.co.uk)

Matlock  
 T: 01629 828250  
 E: [matlock@saxtonmee.co.uk](mailto:matlock@saxtonmee.co.uk)

