



The Orchard, Main Street, Calver, Derbyshire, S32 3XR



Main Street

Offers In The Region Of

£1,100,000

An impressive architecturally designed four-bedroom detached home, this property is nestled among beautifully landscaped gardens in a tranquil setting within the desirable village of Calver, located in the heart of The Peak District National Park. Ideally situated, it offers convenient access to local country stores, pubs, primary schools, and secondary school catchments, as well as the many picturesque Derbyshire villages and major commercial centres within commutable distance.

The property is immaculately presented, offering light and airy accommodation with stunning features. Upon entering, you are greeted by an inviting entrance hall and a ground floor shower room. The cosy snug boasts an original fireplace and built-in storage and display shelving. The large dual-aspect living and dining room, with five sets of full-height French doors opening out to the rear seating terrace, creates an ideal space for entertaining. The bespoke fitted kitchen includes a range of units and appliances, a central island, and a seating area.

Ascending to the first floor, you will find a triple-aspect double bedroom with built-in storage and an en-suite shower room, another double bedroom with a Juliette balcony, a family bathroom and two additional bedrooms. The well-stocked private gardens encircle the property, featuring planted beds, borders with specimen shrubs and trees and seating terraces that provide a perfect spot to admire the spectacular views.

An open-fronted double garage with a workshop and storage space complements the property, along with ample off-road parking for several vehicles.

This home offers a unique blend of architectural elegance, modern convenience, and natural beauty in a sought-after location.

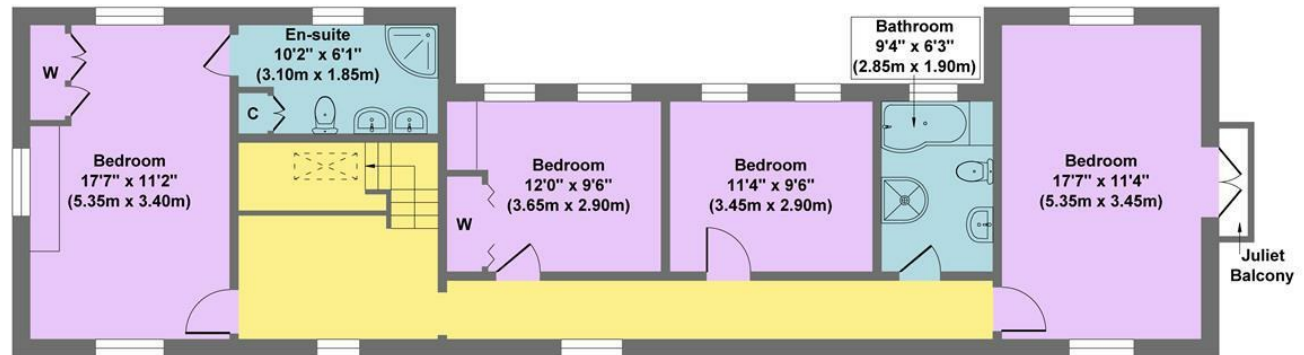


- An Impressive Individually Architecturally Designed Home
- Peaceful Backwater Setting In A Sought After Peak District Village
- Commanding Countryside Views With Direct Access to Many Local Walks
- Within Highly Regarded School Catchment
- Excellent Local Shops & Amenities
- Easy Commutable Distance Of Sheffield & Chesterfield
- Beautifully Presented Throughout
- Double Garage & Ample Off Road Parking For Several Vehicles
- EPC : C
- Viewings: Hathersage Office

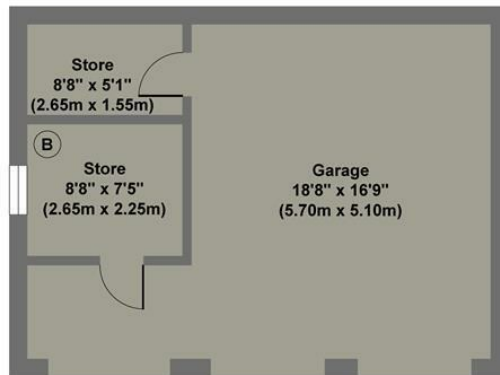




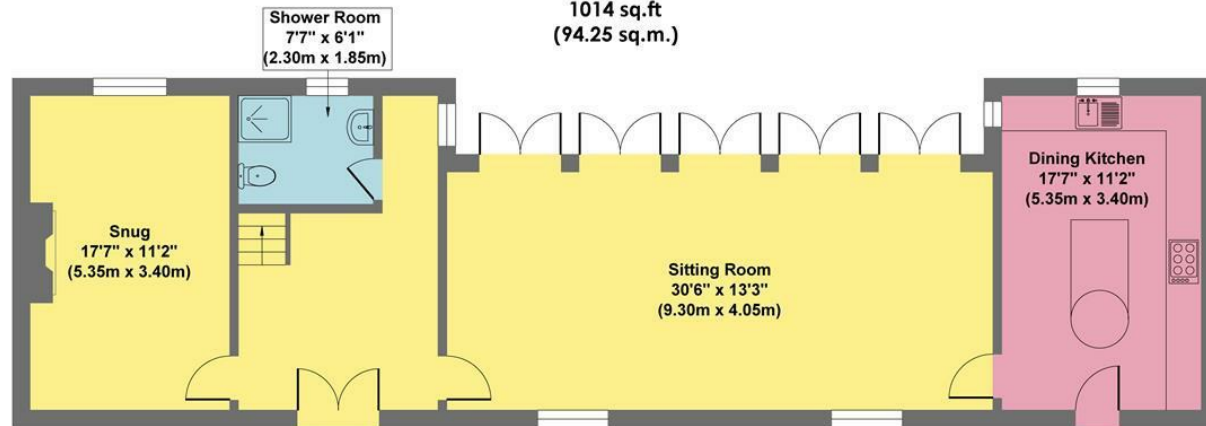
The Orchard



First Floor
Approximate Floor Area
1014 sq.ft
(94.25 sq.m.)



Garage
Approximate Floor Area
485 sq.ft
(45.03 sq.m.)



Ground Floor
Approximate Floor Area
1014 sq.ft
(94.25 sq.m.)

Approx. Gross Internal Floor Area 2513 sq.ft / 233.53 sq.m

Illustration for identification purposes only, measurements are approximate, not to scale

While we endeavour to make our sales particulars fair, accurate and reliable, they are only a general guide to the property and, accordingly, if there is any point, which is of particular importance to you, please contact the relevant office. The Agents have not tested any apparatus, equipment, fittings or services and so cannot verify they are in working order. The buyer is advised to obtain verification. Please note all the measurement details are approximate and should not be relied upon as exact. All plans, floor plans and maps are for guidance purposes only and are not to scale. Under no circumstances should they be relied upon as exact or for use in planning carpets and other such fixtures, fittings or furnishings. YOUR HOME IS AT RISK IF YOU DO NOT KEEP UP REPAYMENTS ON A MORTGAGE OR OTHER LOAN SECURED ON IT. 'A Life Assurance policy may be requested.' 'Written Quotations of credit terms available on request.'

Banner Cross
T: 0114 268 3241
E: bannercross@saxtonmee.co.uk
www.saxtonmee.co.uk

Hathersage
T: 01433 650009
E: hathersage@saxtonmee.co.uk

Bakewell
T: 01629 815307
E: bakewell@saxtonmee.co.uk

Matlock
T: 01629 828250
E: matlock@saxtonmee.co.uk

