



11 Marsh Avenue, Hope, Derbyshire, S33 6RJ

Saxton Mee



# 11 Marsh Avenue

Guide Price

## £275,000

Nestled in the charming Peak District village of Hope, this end-terrace home boasts two spacious double bedrooms, a detached garage, and generous off-road parking.

£275,000 - £300,000 Guide Price

The property is set in a peaceful residential area, surrounded by stunning Derbyshire countryside, offering easy access to a wealth of outdoor activities and picturesque neighbouring villages. It is conveniently located within walking distance of the highly regarded primary and secondary schools, the doctors surgery and local rail links are nearby, making it an ideal choice for families and commuters alike.

The home features gas central heating and double glazing throughout. Upon entering, you are greeted by an entrance lobby with built-in storage, leading to a triple aspect L-shaped living/dining room and a convenient WC. The fitted kitchen adjoins a sunroom, which includes built-in storage and opens onto a rear seating terrace, perfect for enjoying the generous garden which benefits from the afternoon to late evening sun.

Upstairs, the first-floor landing leads to a double bedroom with built-in storage cupboards, a bathroom, and another double bedroom also featuring built-in storage.

The property is approached via a driveway that provides ample off-road parking for several vehicles, culminating in a detached garage with an attached store.

This home is offered with no upward chain and holds potential for further expansion, subject to the necessary planning consents, allowing new owners to customize it to their individual tastes.



- Generous Rear Garden
- Local Rail Links
- Direct Access To A Wealth Of Outdoor Pursuits
- Within Highly Regarded School Catchment
- Garage & Off Road Parking
- Offers Scope To Enlarge & Refurbish To Individual Specifications
- Excellent Village Amenities
- No Upward Chain
- EPC: E
- Viewings: Hathersage Office







# 11 Marsh Avenue

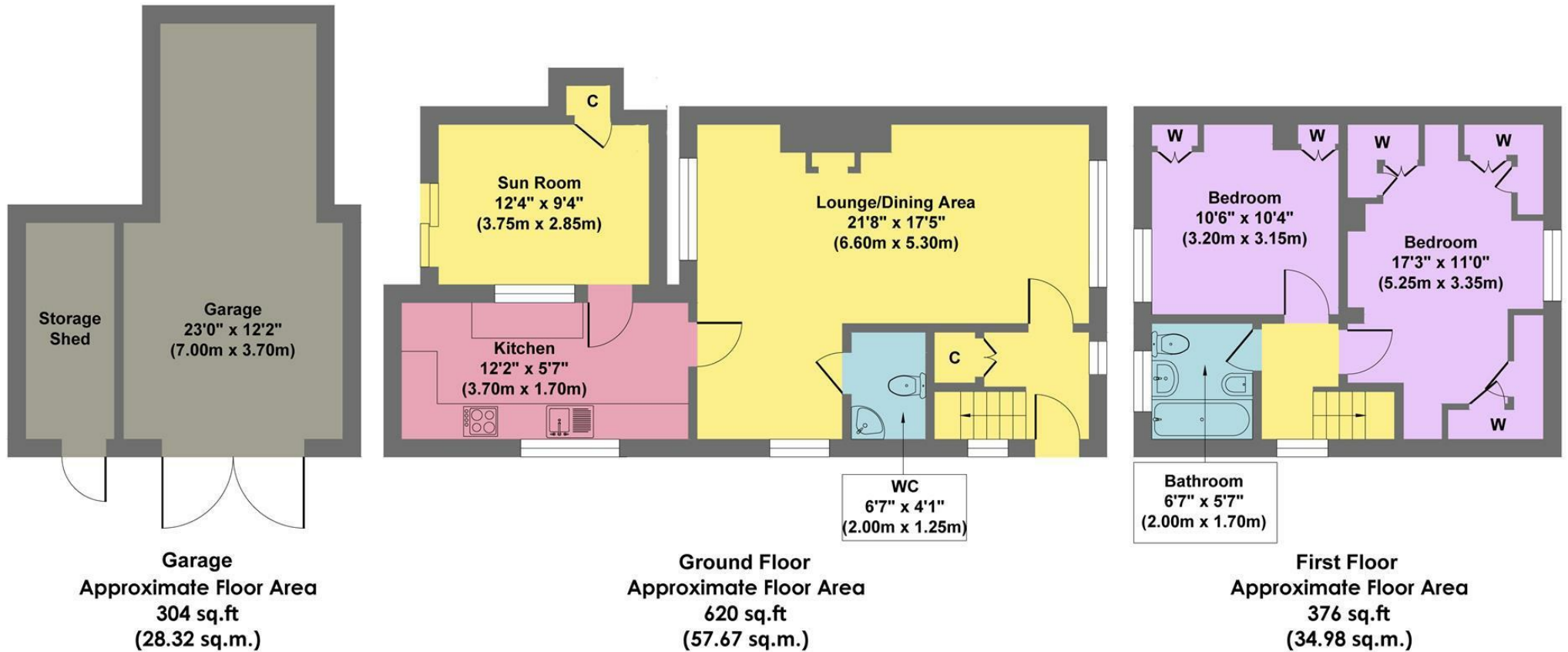


Illustration for identification purposes only, measurements are approximate, not to scale

While we endeavour to make our sales particulars fair, accurate and reliable, they are only a general guide to the property and, accordingly, if there is any point, which is of particular importance to you, please contact the relevant office. The Agents have not tested any apparatus, equipment, fittings or services and so cannot verify they are in working order. The buyer is advised to obtain verification. Please note all the measurement details are approximate and should not be relied upon as exact. All plans, floor plans and maps are for guidance purposes only and are not to scale. Under no circumstances should they be relied upon as exact or for use in planning carpets and other such fixtures, fittings or furnishings. YOUR HOME IS AT RISK IF YOU DO NOT KEEP UP REPAYMENTS ON A MORTGAGE OR OTHER LOAN SECURED ON IT. 'A Life Assurance policy may be requested.' 'Written Quotations of credit terms available on request.'

Banner Cross  
T: 0114 268 3241  
E: [bannercross@saxtonmee.co.uk](mailto:bannercross@saxtonmee.co.uk)  
[www.saxtonmee.co.uk](http://www.saxtonmee.co.uk)

Hathersage  
T: 01433 650009  
E: [hathersage@saxtonmee.co.uk](mailto:hathersage@saxtonmee.co.uk)

Bakewell  
T: 01629 815307  
E: [bakewell@saxtonmee.co.uk](mailto:bakewell@saxtonmee.co.uk)

Matlock  
T: 01629 828250  
E: [matlock@saxtonmee.co.uk](mailto:matlock@saxtonmee.co.uk)

