



The Former Youth Club, Sir William Hill Road, Grindleford, S32 2HS



Sir William Hill Road

Grindleford

Guide Price

£200,000

£200,000 - £225,000 Guide Price

A unique opportunity to purchase a former Wesleyan Chapel with planning consent granted to convert into a two bedroom cottage. Steeped in local history, the property occupies a peaceful picturesque setting in the highly sought after village of Grindleford bordered by spectacular Derbyshire countryside. In the heart of The Peak District National Park whilst within easy commutable access to major commercial centres and with excellent local rail links. With a generous rear garden accessed from Sir William Hill.

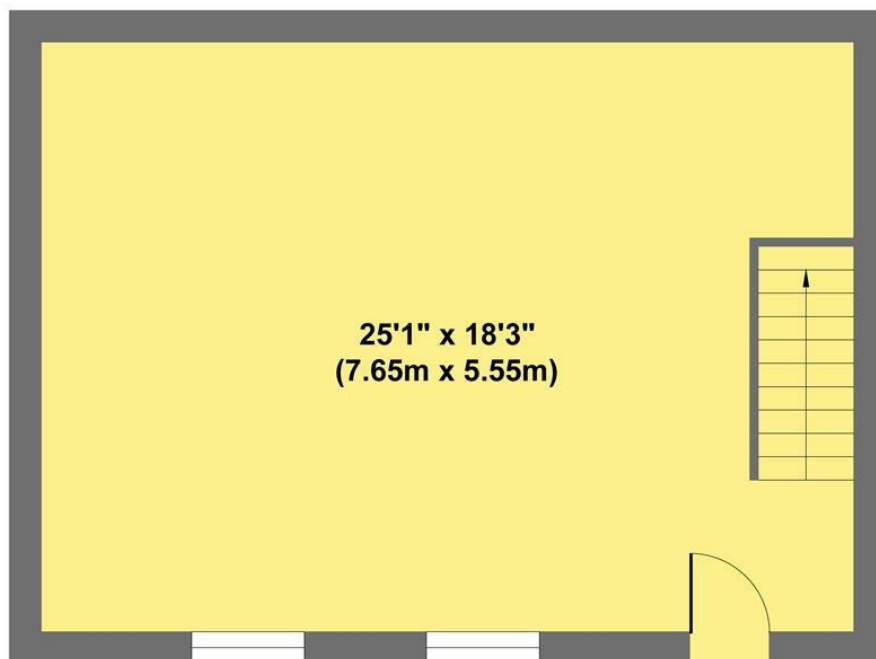
Council Tax Band - Not Applicable

- Picturesque Village
- Planning Permission Granted
- Rail links to Sheffield & Manchester
- Former Wesleyan Chapel
- No Chain

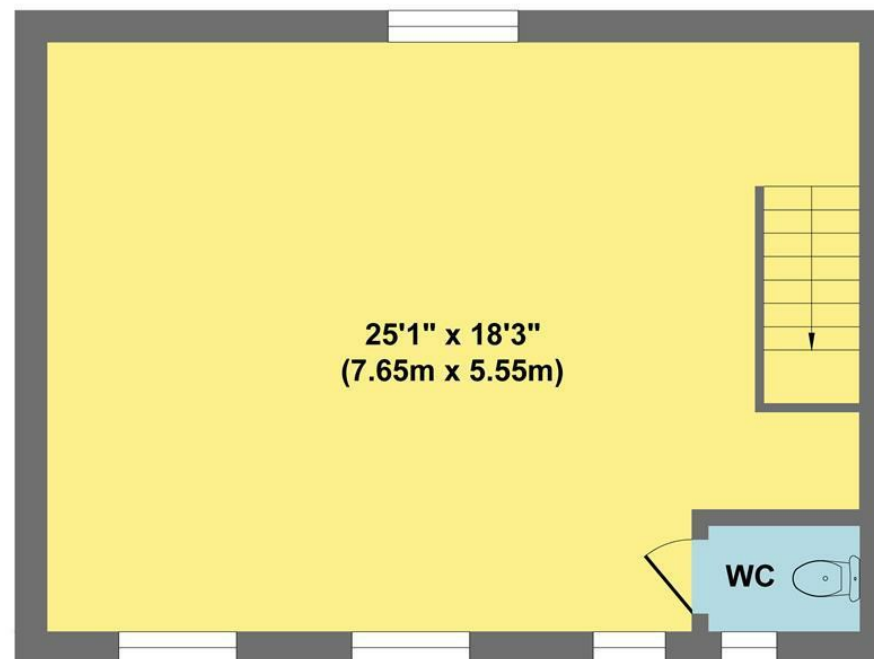




The Former Youth Club



Ground Floor
Approximate Floor Area
Area 457 sq.ft
(42.45 sq.m.)



First Floor
Approximate Floor Area
Area 457 sq.ft
(42.45 sq.m.)

Approx. Gross Internal Floor Area 814 sq.ft / 84.90 sq.m

Illustration for identification purposes only, measurements are approximate, not to scale

While we endeavour to make our sales particulars fair, accurate and reliable, they are only a general guide to the property and, accordingly, if there is any point, which is of particular importance to you, please contact the relevant office. The Agents have not tested any apparatus, equipment, fittings or services and so cannot verify they are in working order. The buyer is advised to obtain verification. Please note all the measurement details are approximate and should not be relied upon as exact. All plans, floor plans and maps are for guidance purposes only and are not to scale. Under no circumstances should they be relied upon as exact or for use in planning carpets and other such fixtures, fittings or furnishings. YOUR HOME IS AT RISK IF YOU DO NOT KEEP UP REPAYMENTS ON A MORTGAGE OR OTHER LOAN SECURED ON IT. 'A Life Assurance policy may be requested.' 'Written Quotations of credit terms available on request.'

Banner Cross
T: 0114 268 3241
E: bannercross@saxtonmee.co.uk
www.saxtonmee.co.uk

Hathersage
T: 01433 650009
E: hathersage@saxtonmee.co.uk

Bakewell
T: 01629 815307
E: bakewell@saxtonmee.co.uk

Matlock
T: 01629 828250
E: matlock@saxtonmee.co.uk

