



39 Castleton Road, Hope, Hope Valley, S33 6SB

Saxton Mee

39 Castleton Road

Hope

Offers In The Region Of

£350,000

Great Family Home In A Highly Sought After Hope Valley Village

A substantial three bedroom terraced property with a generous rear garden and off road parking. Occupying a sought after position in the heart of the village of Hope in HopeValley. Bordered by spectacular Derbyshire countryside with a wealth of outdoor pursuits on the doorstep. The popular Peak District village offers shops, a secondary school, amenities and local rail links.

The accommodation with gas central heating and double glazing comprises: entrance lobby, a sitting room with a bay window and a decorative fireplace. A dining room with built in display shelving, a storage cupboard and a fireplace and patio doors leading to the rear garden. A fitted kitchen with a rear utility porch and WC.

First floor: landing with a staircase leading to the second floor, two bedrooms and a bathroom.

Second floor: a double bedroom with far reaching views.

Exterior: a driveway provides off road parking. To the rear of the property is a long enclosed garden with planted beds, specimen trees, a glazed greenhouse and a timber storage shed.

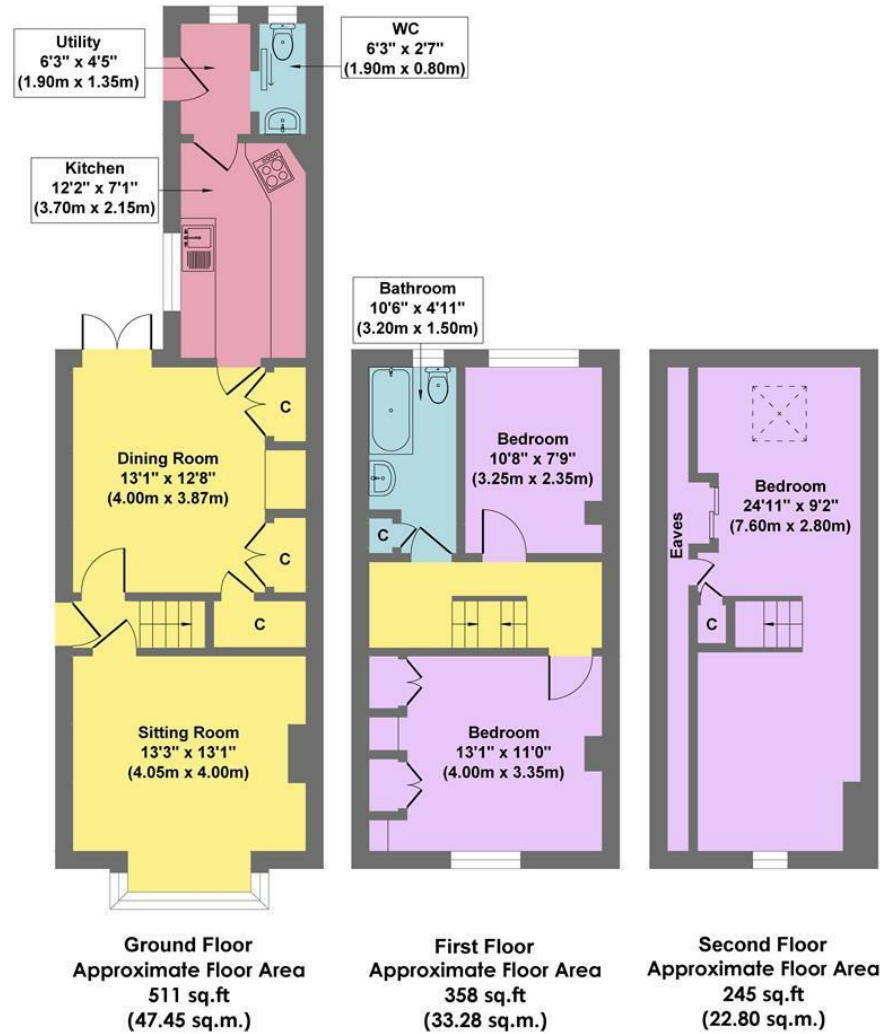
No Upward Chain

- Close To Excellent Local Amenities
- Within Highly Regarded School Catchment
- Access To A Wealth Of Outdoor Pursuits
- Offers Potential To Complete To Individual Specifications
- Easy Commutable Distance Of Major Commercial Centres
- Off Road Parking
- Local Train Links
- No Upward Chain
- EPC: E
- Viewings: Hathersage Office





39 Castleton Road



Approx. Gross Internal Floor Area 1114 sq.ft / 103.53 sq.m

Illustration for identification purposes only, measurements are approximate, not to scale

While we endeavour to make our sales particulars fair, accurate and reliable, they are only a general guide to the property and, accordingly, if there is any point, which is of particular importance to you, please contact the relevant office. The Agents have not tested any apparatus, equipment, fittings or services and so cannot verify they are in working order. The buyer is advised to obtain verification. Please note all the measurement details are approximate and should not be relied upon as exact. All plans, floor plans and maps are for guidance purposes only and are not to scale. Under no circumstances should they be relied upon as exact or for use in planning carpets and other such fixtures, fittings or furnishings. YOUR HOME IS AT RISK IF YOU DO NOT KEEP UP REPAYMENTS ON A MORTGAGE OR OTHER LOAN SECURED ON IT. 'A Life Assurance policy may be requested.' 'Written Quotations of credit terms available on request.'

Banner Cross
T: 0114 268 3241
E: bannercross@saxtonmee.co.uk
www.saxtonmee.co.uk

Hathersage
T: 01433 650009
E: hathersage@saxtonmee.co.uk

Bakewell
T: 01629 815307
E: bakewell@saxtonmee.co.uk

Matlock
T: 01629 828250
E: matlock@saxtonmee.co.uk

