



27 Park Head Crescent, Parkhead, Sheffield, S11 9RD

Saxton Mee

27 Park Head Crescent

Parkhead

Guide Price

£450,000

GUIDE PRICE: £450,000-£475,000

Nestled in the heart of Park Head, one of Ecclesall's most desirable neighbourhoods, this attractive three-bedroom semi-detached home offers the perfect blend of space, style, and convenience. Ideally located just a short stroll from the excellent amenities of Ecclesall Road, residents will enjoy easy access to boutique shops, cafés, restaurants, and highly regarded local schools. The property is also perfectly positioned for nature lovers, with Ecclesall Woods, Endcliffe Park, and the Peak District National Park all nearby.

The accommodation is arranged over three floors and features a thoughtfully extended ground floor, providing generous and versatile living space ideal for modern family life.

Ground Floor:

A welcoming hallway leads to a spacious living room, a stylish open-plan kitchen/dining area, and a bright sun room overlooking the garden — perfect for entertaining or relaxing. A convenient downstairs WC completes this level.

First Floor:

There are three well-proportioned bedrooms and a modern family bathroom, along with a useful storage room for additional practicality.

Second Floor:

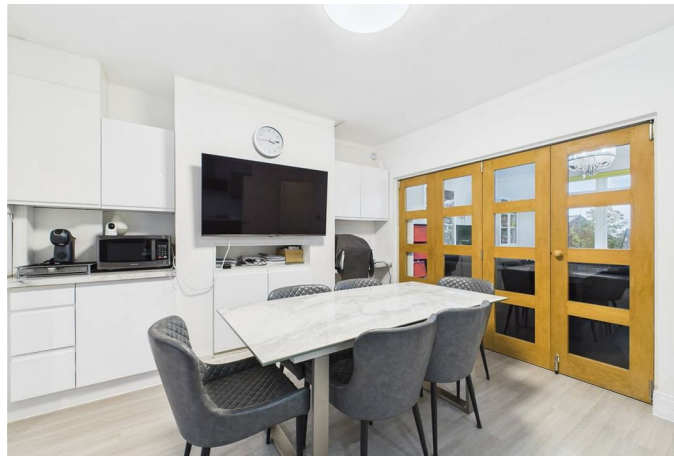
A converted attic space, accessed via a proper staircase, offers excellent storage or potential for future development (subject to necessary permissions).

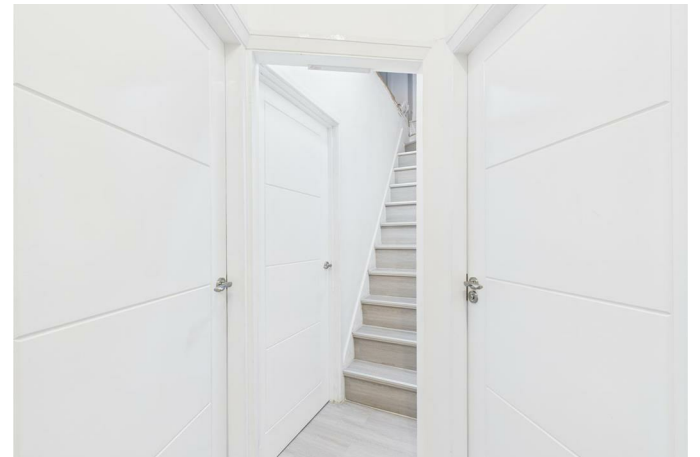
Outside, the property benefits from parking on the driveway, and a level enclosed rear garden — ideal for outdoor dining and family activities.

With its superb location, extended living space, parking, and access to excellent schools and green spaces, this is a wonderful opportunity to acquire a home in one of Sheffield's most desirable residential areas.



- Situated in the highly sought-after Park Head area of Ecclesall, close to amenities on Ecclesall Road
- Three well-proportioned bedrooms and a modern family bathroom
- Extended ground floor offering spacious open-plan kitchen/dining area and bright sun room
- Separate living room and convenient downstairs WC
- Converted attic with full staircase access, providing excellent storage space
- Driveway parking
- Level, enclosed rear garden — perfect for families and outdoor entertaining
- Within catchment for highly regarded local schools and close to Ecclesall Woods and the Peak District National Park







While we endeavour to make our sales particulars fair, accurate and reliable, they are only a general guide to the property and, accordingly, if there is any point, which is of particular importance to you, please contact the relevant office. The Agents have not tested any apparatus, equipment, fittings or services and so cannot verify they are in working order. The buyer is advised to obtain verification. Please note all the measurement details are approximate and should not be relied upon as exact. All plans, floor plans and maps are for guidance purposes only and are not to scale. Under no circumstances should they be relied upon as exact or for use in planning carpets and other such fixtures, fittings or furnishings. YOUR HOME IS AT RISK IF YOU DO NOT KEEP UP REPAYMENTS ON A MORTGAGE OR OTHER LOAN SECURED ON IT. 'A Life Assurance policy may be requested.' 'Written Quotations of credit terms available on request.'

Banner Cross
T: 0114 268 3241
E: bannercross@saxtonmee.co.uk
www.saxtonmee.co.uk

Hathersage
T: 01433 650009
E: hathersage@saxtonmee.co.uk

Bakewell
T: 01629 815307
E: bakewell@saxtonmee.co.uk

Matlock
T: 01629 828250
E: matlock@saxtonmee.co.uk

