



322 Abbey Lane, Beauchief, Sheffield, S8 0BX

Saxton Mee

322 Abbey Lane

Beauchief

Guide Price

£675,000

GUIDE PRICE £675,000-£695,000

An Exceptional Four-Bedroom Detached Bungalow in the Heart of Beauchief, Abbey Lane – South West Sheffield

Welcome to one of South West Sheffield's most remarkable homes. Situated proudly on the prestigious Abbey Lane in the sought-after suburb of Beauchief, this outstanding four-bedroom detached bungalow offers an exquisite blend of style, space, and architectural brilliance – a home that truly must be seen to be believed.

From the moment you arrive, the property captivates with its charming frontage: a beautifully maintained, flower-filled garden and a long driveway providing ample off-road parking.

Step inside and prepare to be impressed. The heart of the home lies in the spectacular open-plan rear extension, where architecturally designed glass and exposed red brickwork create a dramatic and light-filled living space. This exceptional area includes a bespoke kitchen complete with a breakfast bar and expansive dining space – perfect for family gatherings or entertaining on a grand scale.

The bungalow also features four well-proportioned bedrooms, ideal for families or flexible use as a home office or guest accommodation, the principal bedroom has a modern en-suite and the bungalow has a stylish and contemporary family bathroom.

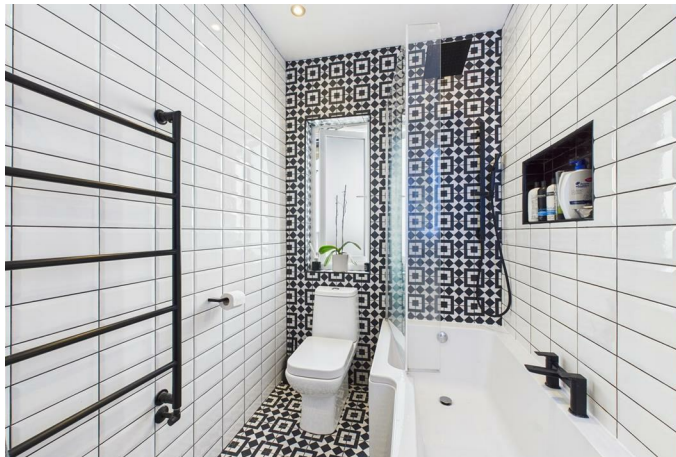
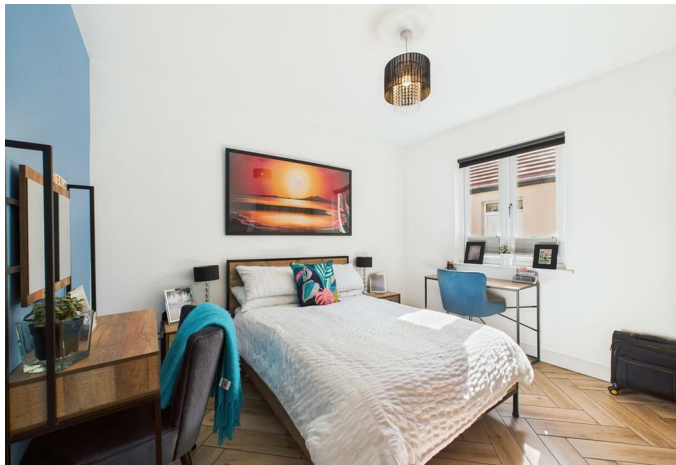
To the rear, the garden is a true retreat. Lovingly landscaped, it offers a pergola-covered seating area, a generous patio, well-kept lawn, colourful flower borders, and a concealed vegetable patch – a perfect blend of beauty and practicality.

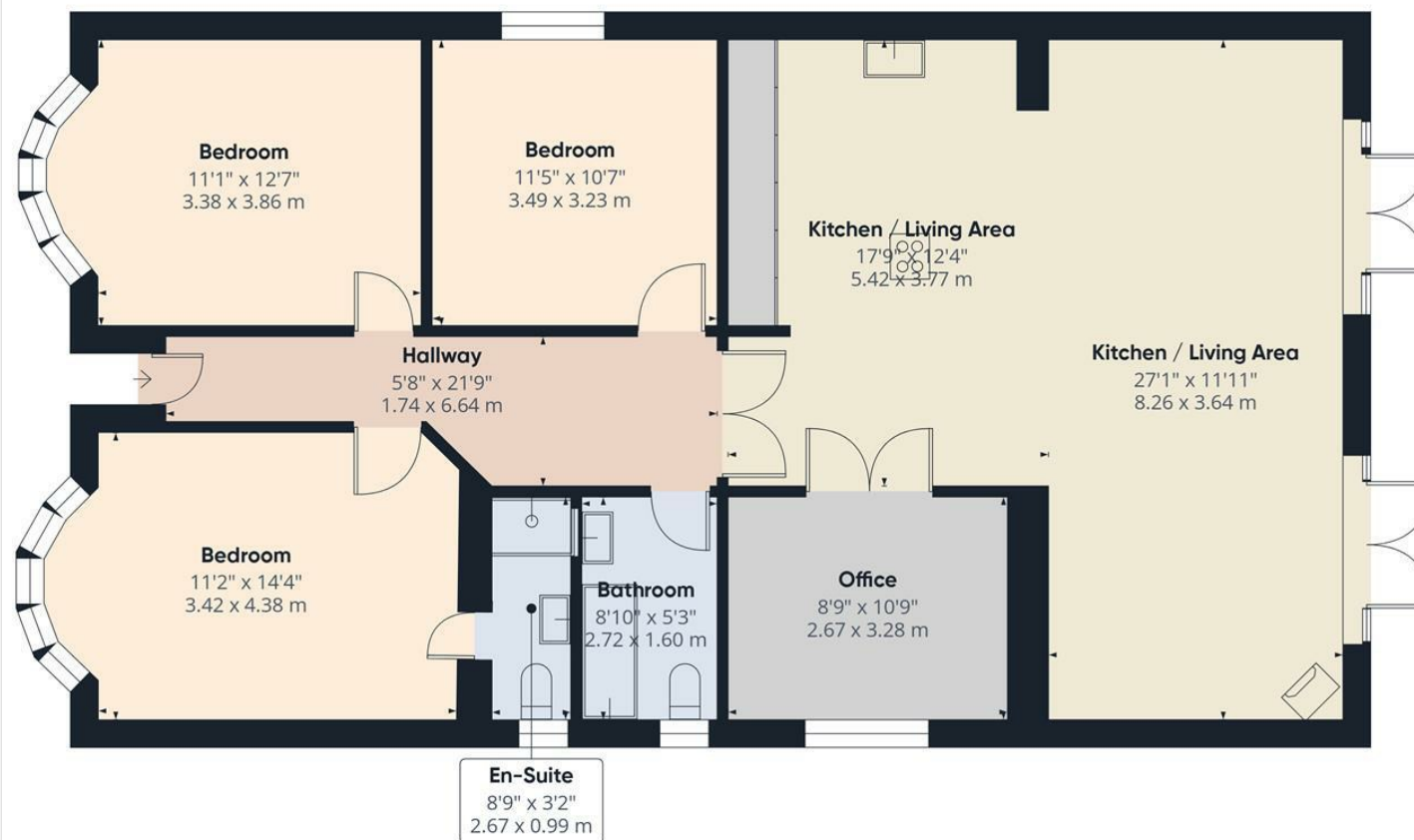
Located in the highly desirable Beauchief area, this home is just moments from excellent local amenities, highly regarded schools, fantastic transport links, and the green spaces Sheffield is known for – including easy access to the Peak District.



- Detached bungalow with four well-proportioned bedrooms offering flexible living space
- Striking open-plan rear extension with expansive floor to ceiling glass and exposed brick
- Excellent well connected location close to amenities and transport links
- Bright and spacious with stylish decor throughout
- Stunning landscaped rear garden with patio seating area, pergola, lawn, flower beds and vegetable patches
- Underfloor heating and contemporary gas log burner
- Seeing is believing!
- Ample parking on the driveway







Approximate total area^m
1262 ft²
117.2 m²

(1) Excluding balconies and terraces

While every attempt has been made to ensure accuracy, all measurements are approximate, not to scale. This floor plan is for illustrative purposes only.

Calculations are based on RICS IPMS 3C standard.

GIRAFFE360

While we endeavour to make our sales particulars fair, accurate and reliable, they are only a general guide to the property and, accordingly, if there is any point, which is of particular importance to you, please contact the relevant office. The Agents have not tested any apparatus, equipment, fittings or services and so cannot verify they are in working order. The buyer is advised to obtain verification. Please note all the measurement details are approximate and should not be relied upon as exact. All plans, floor plans and maps are for guidance purposes only and are not to scale. Under no circumstances should they be relied upon as exact or for use in planning carpets and other such fixtures, fittings or furnishings. YOUR HOME IS AT RISK IF YOU DO NOT KEEP UP REPAYMENTS ON A MORTGAGE OR OTHER LOAN SECURED ON IT. 'A Life Assurance policy may be requested.' 'Written Quotations of credit terms available on request.'

Banner Cross
T: 0114 268 3241
E: bannercross@saxtonmee.co.uk
www.saxtonmee.co.uk

Hathersage
T: 01433 650009
E: hathersage@saxtonmee.co.uk

Bakewell
T: 01629 815307
E: bakewell@saxtonmee.co.uk

Matlock
T: 01629 828250
E: matlock@saxtonmee.co.uk