



126 Springfield Road, Millhouses, Sheffield, S7 2GF

Saxton Mee

126 Springfield Road

Millhouses

Offers Around

£550,000

A stunning, sympathetically and tastefully extended four Bedroom, two Bathroom semi detached family home, located in the highly desirable residential area of Millhouses with close proximity to excellent schools, local parks, and an excellent range of amenities.

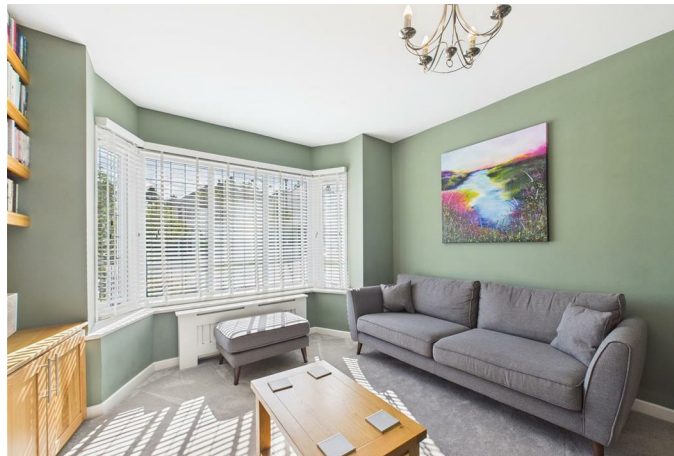
The property has been extended to the side and rear offering great bespoke accommodation which must be viewed internally to do full justice.

Reception Hall, Cloakroom, lovely open plan living Kitchen well fitted out with an extensive range of units and integrated appliances, adjacent Dining area with bifold doors leading out on to the terrace and garden, and separate family area ideal for young children. Utility room, small Garage/store, Sitting room with bay window. On the first floor; master Bedroom with bay window, range of built in wardrobes, and ensuite luxury Bathroom. Double Bedroom 2 with bay window, two further good Bedrooms, luxury family Bathroom with shower.

Outside to the front; offroad parking for two and garden area. To the rear, a lovely private aspect with terrace, lawn, and floral borders.



- Stunning Family Home
- Superbly Extended to the Side and Rear
- Four Excellent Bedrooms and Two Bathrooms
- Excellent Catchment Area for Schools
- Immaculately Presented Throughout
- Large Open Plan Kitchen, Dining Area, and Family Area with Bifold Doors
- Attractive Rear Garden with Patio, Lawned Area and Private Aspect
- Good Offroad Parking





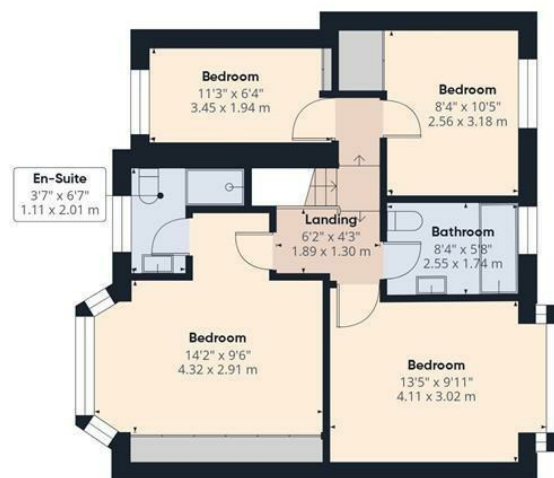


Ground Floor

Approximate total area^m

1307 ft²

121.4 m²



Floor 1

(1) Excluding balconies and terraces

While every attempt has been made to ensure accuracy, all measurements are approximate, not to scale. This floor plan is for illustrative purposes only.

Calculations are based on RICS IPMS 3C standard.

GIRAFFE360

While we endeavour to make our sales particulars fair, accurate and reliable, they are only a general guide to the property and, accordingly, if there is any point, which is of particular importance to you, please contact the relevant office. The Agents have not tested any apparatus, equipment, fittings or services and so cannot verify they are in working order. The buyer is advised to obtain verification. Please note all the measurement details are approximate and should not be relied upon as exact. All plans, floor plans and maps are for guidance purposes only and are not to scale. Under no circumstances should they be relied upon as exact or for use in planning carpets and other such fixtures, fittings or furnishings. YOUR HOME IS AT RISK IF YOU DO NOT KEEP UP REPAYMENTS ON A MORTGAGE OR OTHER LOAN SECURED ON IT. 'A Life Assurance policy may be requested.' 'Written Quotations of credit terms available on request.'

Banner Cross
T: 0114 268 3241
E: bannercross@saxtonmee.co.uk
www.saxtonmee.co.uk

Hathersage
T: 01433 650009
E: hathersage@saxtonmee.co.uk

Bakewell
T: 01629 815307
E: bakewell@saxtonmee.co.uk

Matlock
T: 01629 828250
E: matlock@saxtonmee.co.uk

