



Flat 163 Ormond Road, Jordanthorpe, Sheffield, S8 8FT

Saxton Mee

Flat 163 Ormond Road

Jordanthorpe

Guide Price

£75,000

GUIDE PRICE £75,000-£85,000

Nestled on the second floor of a well-maintained block in the convenient and popular Jordanthorpe area, this charming apartment presents a fantastic opportunity for those looking to take their first step onto the property ladder or expand a rental portfolio.

The layout features a spacious double bedroom, a compact additional room ideal for a home office or storage, a contemporary family bathroom, and a well-equipped fitted kitchen. The property offers a comfortable and practical living space, full of potential.

Residents also benefit from access to shared garden areas.

With excellent transport links, easy motorway access, and a range of local shops and amenities nearby, this home is perfectly positioned for commuters and convenience seekers alike.

Don't miss out—this is a great choice in a popular location.

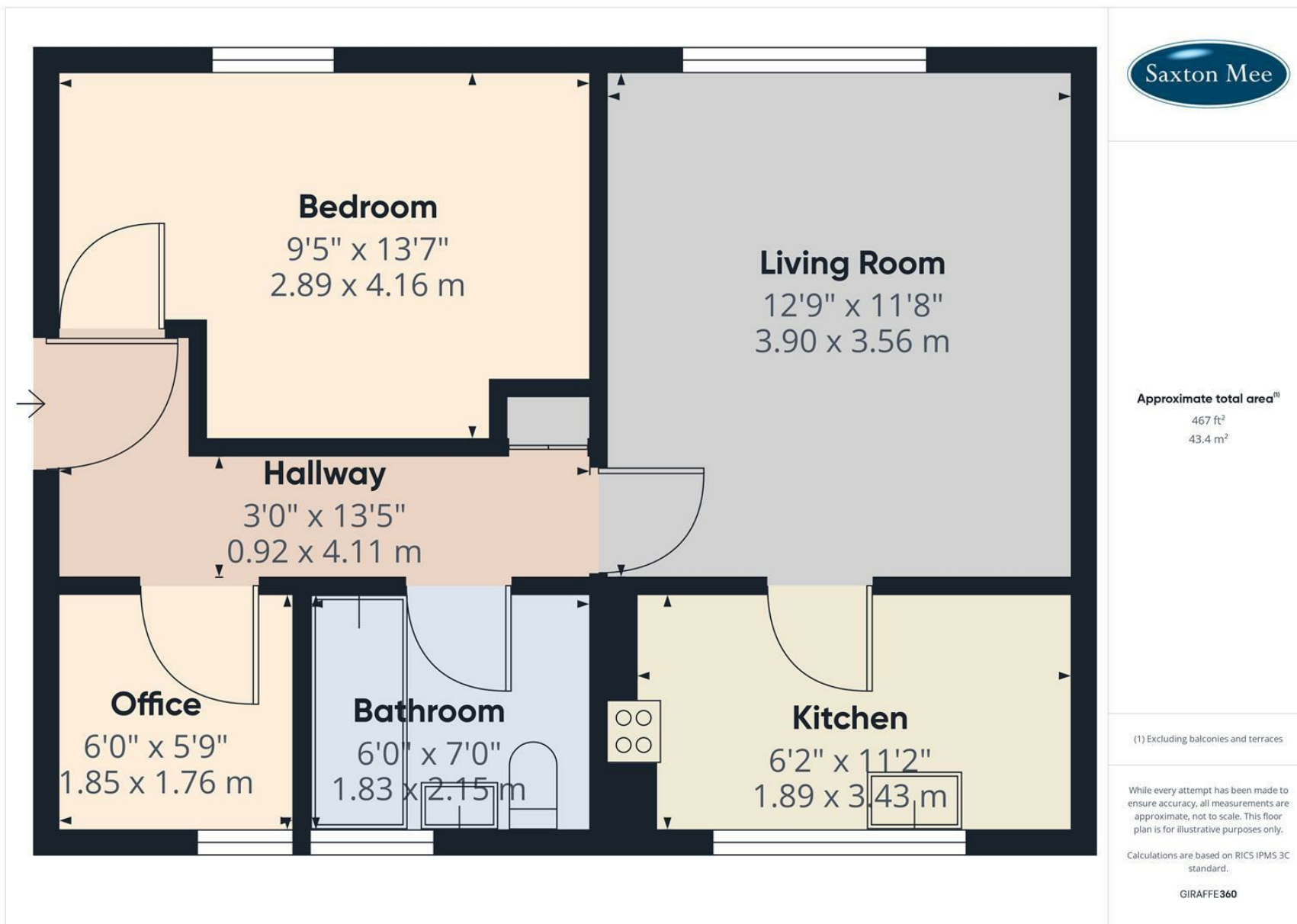
When rented out this apartment achieves a strong rental yield of approximately 10%



- Spacious second floor apartment in a popular Jordanthorpe location
- Generous main bedroom plus a versatile study/storage room
- Modern fitted kitchen and well-appointed family bathroom
- Ideal for first-time buyers or buy-to-let investors
- Close to local amenities, shops, and local schools
- Excellent motorway access and public transport links
- Offered for sale with no onward chain







While we endeavour to make our sales particulars fair, accurate and reliable, they are only a general guide to the property and, accordingly, if there is any point, which is of particular importance to you, please contact the relevant office. The Agents have not tested any apparatus, equipment, fittings or services and so cannot verify they are in working order. The buyer is advised to obtain verification. Please note all the measurement details are approximate and should not be relied upon as exact. All plans, floor plans and maps are for guidance purposes only and are not to scale. Under no circumstances should they be relied upon as exact or for use in planning carpets and other such fixtures, fittings or furnishings. YOUR HOME IS AT RISK IF YOU DO NOT KEEP UP REPAYMENTS ON A MORTGAGE OR OTHER LOAN SECURED ON IT. 'A Life Assurance policy may be requested.' 'Written Quotations of credit terms available on request.'

Banner Cross
T: 0114 268 3241
E: bannercross@saxtonmee.co.uk
www.saxtonmee.co.uk

Hathersage
T: 01433 650009
E: hathersage@saxtonmee.co.uk

Bakewell
T: 01629 815307
E: bakewell@saxtonmee.co.uk

Matlock
T: 01629 828250
E: matlock@saxtonmee.co.uk

