



17 Brooklands Crescent, Fulwood, Sheffield, S10 4GE

Saxton Mee

17 Brooklands Crescent

Fulwood

Offers Around

£400,000

Situated in a superb location within a very short walk of the nearby Forge Dam and Mayfield Valley and on a quiet road in the heart of Fulwood within walking distance of nearby shops, restaurants and public transport links. A good sized three bedroom semi detached family home in need of updating and on an excellent plot with very long rear garden and excellent potential to extend. Offered for sale with immediate vacant possession and NO CHAIN.

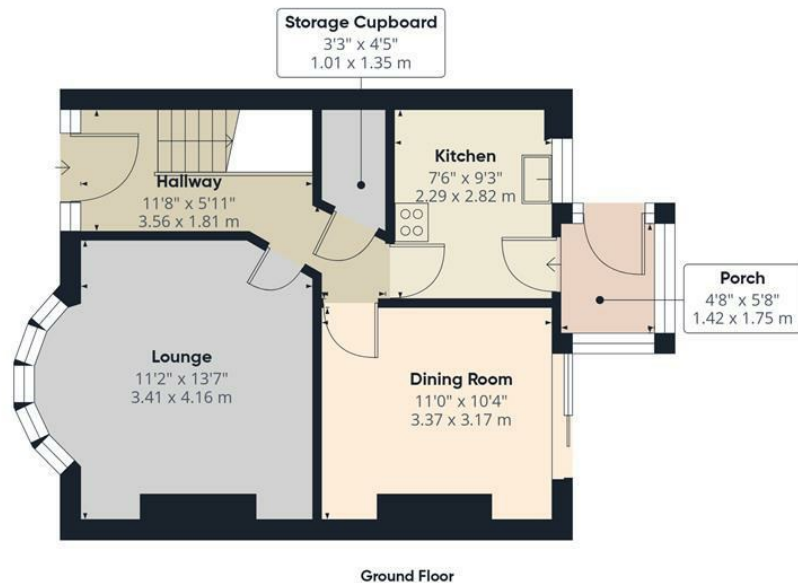
Reception Hall, bay windowed Sitting room, separate Dining room with patio doors leading out to terrace and Garden, well fitted Kitchen, Rear Porch. On the first floor; two good double Bedrooms and an excellent sized third Bedroom, Bathroom with full suite and electric shower.

Outside; Driveway and attractive front Garden. To the rear; detached Garage, terrace area, and lovely, very long, well established and maintained rear Garden which is south westerly facing.

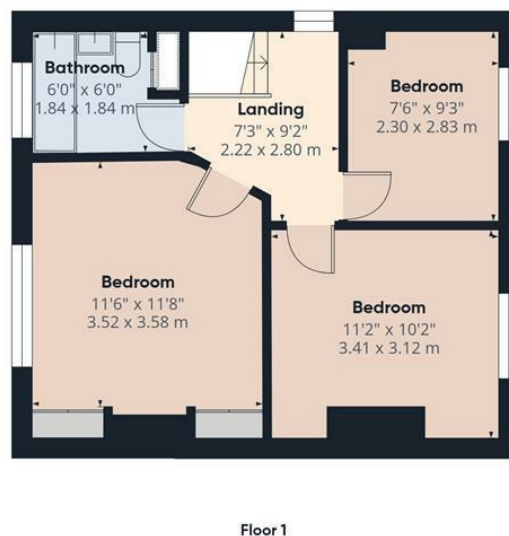
- Superb Location on the Level Within Short Walk of Forge Dam and Mayfield Valley
- For Sale with Immediate Vacant Possession and NO CHAIN
- In Need of Updating but Offering Good Sized, Spacious Accommodation
- Excellent Potential to Extend Subject to Planning
- Rear Dining Room with Patio Doors to Long South Facing Garden
- Detached Garage
- Short Walk of the Excellent Shopping Facilities of Fulwood Village and Other Amenities
- EPC TBC







Approximate total area^m
893 ft²
83 m²



(1) Excluding balconies and terraces

While every attempt has been made to ensure accuracy, all measurements are approximate, not to scale. This floor plan is for illustrative purposes only.

Calculations are based on RICS IPMS 3C standard.

GIRAFFE360

While we endeavour to make our sales particulars fair, accurate and reliable, they are only a general guide to the property and, accordingly, if there is any point, which is of particular importance to you, please contact the relevant office. The Agents have not tested any apparatus, equipment, fittings or services and so cannot verify they are in working order. The buyer is advised to obtain verification. Please note all the measurement details are approximate and should not be relied upon as exact. All plans, floor plans and maps are for guidance purposes only and are not to scale. Under no circumstances should they be relied upon as exact or for use in planning carpets and other such fixtures, fittings or furnishings. YOUR HOME IS AT RISK IF YOU DO NOT KEEP UP REPAYMENTS ON A MORTGAGE OR OTHER LOAN SECURED ON IT. 'A Life Assurance policy may be requested.' 'Written Quotations of credit terms available on request.'

Banner Cross
T: 0114 268 3241
E: bannercross@saxtonmee.co.uk
www.saxtonmee.co.uk

Hathersage
T: 01433 650009
E: hathersage@saxtonmee.co.uk

Bakewell
T: 01629 815307
E: bakewell@saxtonmee.co.uk

Matlock
T: 01629 828250
E: matlock@saxtonmee.co.uk

