



Flat 3 Nether Court Oakdale Road, Nether Edge, Sheffield, S7 1SL

Saxton Mee



# Flat 3 Nether Court Oakdale

## Nether Edge

Guide Price

# £150,000

GUIDE PRICE £150,000-£160,000

Situated in the desirable suburb of Nether Edge, this fabulous first-floor one-bedroom apartment offers generous living space and a peaceful outlook, making it an ideal choice for first-time buyers, downsizers, or buy-to-let investors.

The apartment features a spacious lounge with open access to a well-appointed kitchen, creating a sociable and functional living area. The good-sized double bedroom and the lounge both enjoy attractive views of mature trees and greenery, providing a tranquil setting. A modern family bathroom completes the accommodation.

Further benefits include an allocated parking space and a private storage room, adding valuable practicality to this already appealing home.

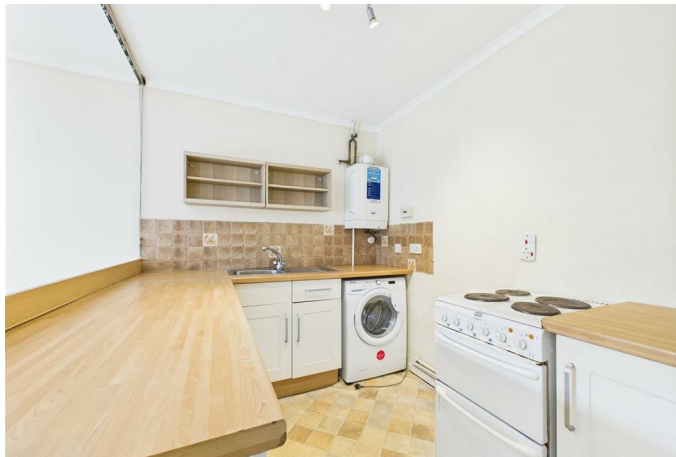
Located close to a vibrant mix of independent cafes, local shops, desirable schools, and excellent transport links, this property combines the charm of its leafy surroundings with superb urban convenience.

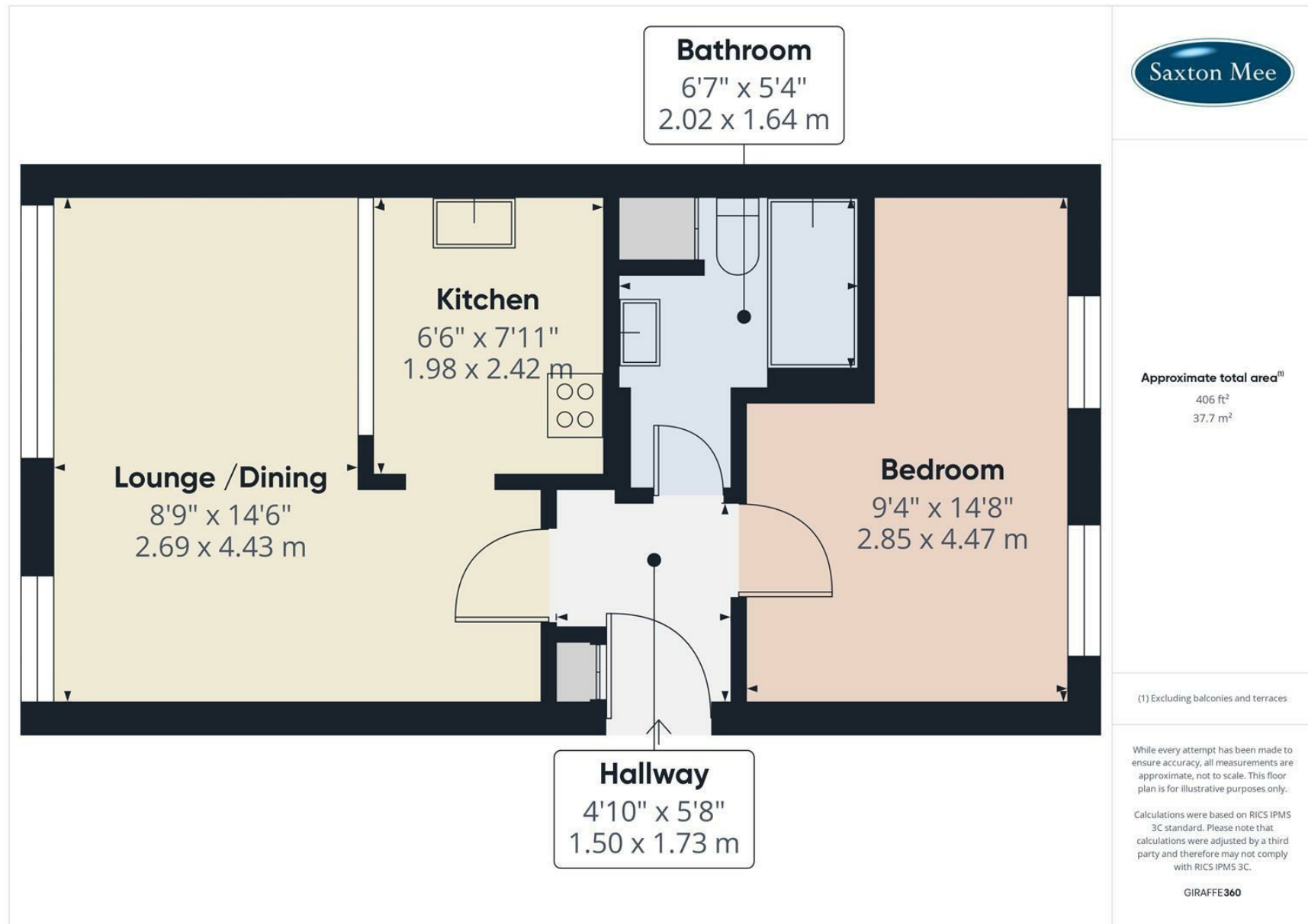
Offered for sale with no onward chain, this is a fantastic opportunity to secure a well-maintained apartment in one of Sheffield's most sought-after areas.

- No onward chain!
- Spacious one bedroom 1st floor apartment
- Allocated parking space
- Allocated storage room on ground floor
- Has been a successful rental property so would be a great investment for someone
- Perfect for a first time buyer, downsizer or buy to let investor
- Excellent and highly sought after location of Nether Edge
- Council Tax Band: A
- Tenure: Leasehold









While we endeavour to make our sales particulars fair, accurate and reliable, they are only a general guide to the property and, accordingly, if there is any point, which is of particular importance to you, please contact the relevant office. The Agents have not tested any apparatus, equipment, fittings or services and so cannot verify they are in working order. The buyer is advised to obtain verification. Please note all the measurement details are approximate and should not be relied upon as exact. All plans, floor plans and maps are for guidance purposes only and are not to scale. Under no circumstances should they be relied upon as exact or for use in planning carpets and other such fixtures, fittings or furnishings. YOUR HOME IS AT RISK IF YOU DO NOT KEEP UP REPAYMENTS ON A MORTGAGE OR OTHER LOAN SECURED ON IT. 'A Life Assurance policy may be requested.' 'Written Quotations of credit terms available on request.'

**Banner Cross**  
T: 0114 268 3241  
E: [bannercross@saxtonmee.co.uk](mailto:bannercross@saxtonmee.co.uk)  
[www.saxtonmee.co.uk](http://www.saxtonmee.co.uk)

**Hathersage**  
T: 01433 650009  
E: [hathersage@saxtonmee.co.uk](mailto:hathersage@saxtonmee.co.uk)

**Bakewell**  
T: 01629 815307  
E: [bakewell@saxtonmee.co.uk](mailto:bakewell@saxtonmee.co.uk)

**Matlock**  
T: 01629 828250  
E: [matlock@saxtonmee.co.uk](mailto:matlock@saxtonmee.co.uk)

