



70 Studfield Hill & Two Building Plots To The Rear, Loxley, Sheffield, S6 4SJ

Saxton Mee

70 Studfield Hill & Two Building Plots To The Rear

Loxley

Offers Around

£700,000

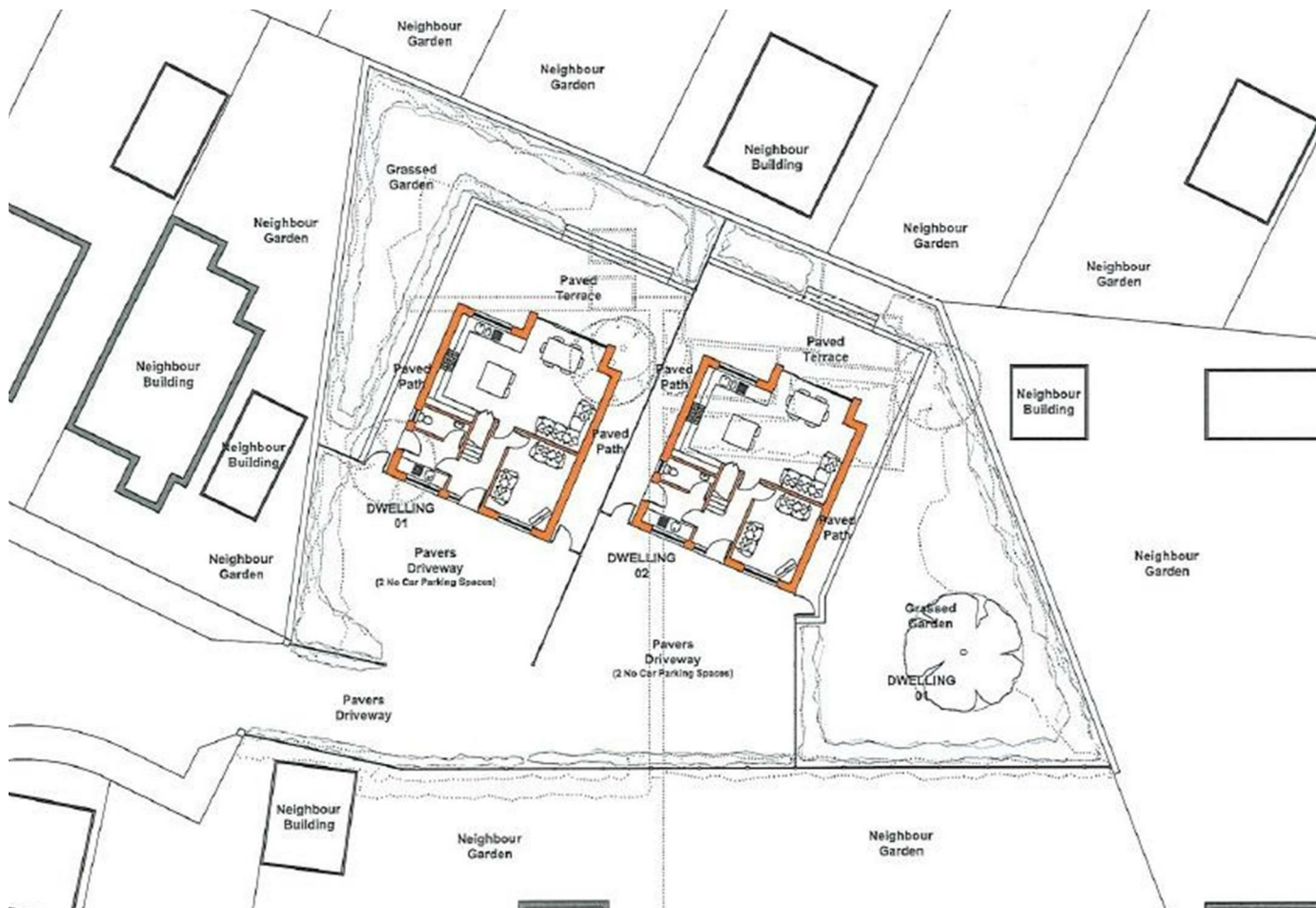
Situated in a great location, on this popular road, a large three bedroom detached bungalow with large double garage in need of some general updating. The property is situated on a good plot with in and out driveway and offered for sale with immediate vacant possession and no chain.

To the rear with separate access off Studfield Drive, are TWO BUILDING PLOTS with PLANNING PERMISSION GRANTED for TWO, 4 BEDROOM, 3 BATHROOM DETACHED HOUSES.

The bungalow comprises: reception hall, good sized lounge, dining room, kitchen with good range of units, long inner hall, two double bedrooms and good sized third bedroom, bathroom and separate WC. Outside: To the front, garden area and great in and out driveway providing extensive off road parking. Driveway to the side giving access to the large detached double garage with workshop/utility to the rear and WC. Good sized rear garden.

Great location convenient for all amenities and within easy access of the open countryside.

Planning Reference Number: 23/03090/OUT (Formerly PP/12492556)



- Attractive Large Three Bedroom Detached Bungalow in Need of Some General Updating
- Lovely Wide Plot with In and Out Driveway
- For Sale with Immediate Vacant Possession and No Chain
- Building Plots with PLANNING PERMISSION for Two, Four Bedroom Detached Houses
- Attractive Garden to Front and Rear
- Large Detached Double Garage with Workshop/Utility and WC to Rear
- Planning Reference Number: 23/03090/OUT (Formerly PP/12492556)
- EPC Rating TBC
- Viewing: Banner Cross Office



Proposed Front Elevations





Ground Floor



Ground Floor



Approximate total area⁽¹⁾

1538 ft²

142.8 m²

(1) Excluding balconies and terraces.

While every attempt has been made to ensure accuracy, all measurements are approximate, not to scale. This floor plan is for illustrative purposes only.

Calculations were based on RICS IPMS 3C standard. Please note that calculations were adjusted by a third party and therefore may not comply with RICS IPMS 3C.

GIRAFFE360

While we endeavour to make our sales particulars fair, accurate and reliable, they are only a general guide to the property and, accordingly, if there is any point, which is of particular importance to you, please contact the relevant office. The Agents have not tested any apparatus, equipment, fittings or services and so cannot verify they are in working order. The buyer is advised to obtain verification. Please note all the measurement details are approximate and should not be relied upon as exact. All plans, floor plans and maps are for guidance purposes only and are not to scale. Under no circumstances should they be relied upon as exact or for use in planning carpets and other such fixtures, fittings or furnishings. YOUR HOME IS AT RISK IF YOU DO NOT KEEP UP REPAYMENTS ON A MORTGAGE OR OTHER LOAN SECURED ON IT. 'A Life Assurance policy may be requested.' 'Written Quotations of credit terms available on request.'

Banner Cross
T: 0114 268 3241
E: bannercross@saxtonmee.co.uk
www.saxtonmee.co.uk

Hathersage
T: 01433 650009
E: hathersage@saxtonmee.co.uk

Bakewell
T: 01629 815307
E: bakewell@saxtonmee.co.uk

Matlock
T: 01629 828250
E: matlock@saxtonmee.co.uk

