



8 Woodstock Road, Loxley, Sheffield, S6 6TF

Saxton Mee

8 Woodstock Road

Loxley

Guide Price

£240,000

GUIDE PRICE £240,000 - £250,000

Charming 3-Bedroom Semi-Detached Home – Renovation Opportunity in Desirable Loxley

Located in the sought-after area of Loxley, this delightful three-bedroom semi-detached property offers a fantastic opportunity for buyers looking for a renovation project. Nestled on a generous corner plot, the home benefits from a private driveway and a detached garage, providing both space and potential.

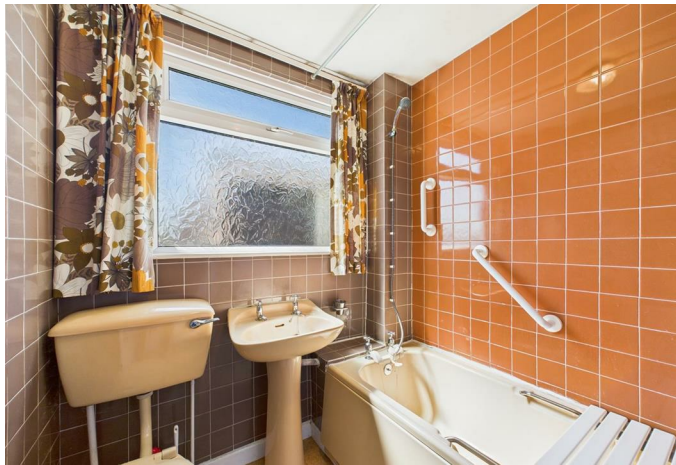
The accommodation comprises an entrance hallway leading into a spacious living room, which flows through to a bright kitchen/diner with direct access to the small rear garden. A lovely sun trap perfect for enjoying some fresh air. Upstairs, the first floor hosts three well-proportioned bedrooms and a family bathroom.

With excellent access to local amenities, reputable schools, and the beautiful surrounding countryside, this property is perfectly positioned for family life. Offering great scope to modernise and add value, this home presents an ideal project for those looking to put their own stamp on a property in a prime location.

Early viewing is highly recommended.

- Fantastic location in Loxley, close to the countryside, amenities and local schools
- Good size three bedroom semi detached house
- In need of modernisation and full of potential
- Corner plot with driveway and separate garage
- Small lawned garden to the rear
- No onward chain







While we endeavour to make our sales particulars fair, accurate and reliable, they are only a general guide to the property and, accordingly, if there is any point, which is of particular importance to you, please contact the relevant office. The Agents have not tested any apparatus, equipment, fittings or services and so cannot verify they are in working order. The buyer is advised to obtain verification. Please note all the measurement details are approximate and should not be relied upon as exact. All plans, floor plans and maps are for guidance purposes only and are not to scale. Under no circumstances should they be relied upon as exact or for use in planning carpets and other such fixtures, fittings or furnishings. YOUR HOME IS AT RISK IF YOU DO NOT KEEP UP REPAYMENTS ON A MORTGAGE OR OTHER LOAN SECURED ON IT. 'A Life Assurance policy may be requested.' 'Written Quotations of credit terms available on request.'

Banner Cross
T: 0114 268 3241
E: bannercross@saxtonmee.co.uk
www.saxtonmee.co.uk

Hathersage
T: 01433 650009
E: hathersage@saxtonmee.co.uk

Bakewell
T: 01629 815307
E: bakewell@saxtonmee.co.uk

Matlock
T: 01629 828250
E: matlock@saxtonmee.co.uk

