



98 Smithy Moor Avenue, Stocksbridge, Sheffield, S36 1FN

Saxton Mee

98 Smithy Moor Avenue

Stocksbridge

Offers In The Region Of

£210,000

£210,000 Offers In The Region Of

A well presented and effectively extended three bedroom semi detached family home offering three bedrooms upstairs and an abundance of space downstairs due to the rear extension. This delightful property is situated in this popular residential area and a stones throw from open countryside and nearby fox valley retail centre with a variety of amenities including shops, cafes and bars.

This lovely family home briefly comprises; Entrance lobby with useful storage cupboard, downstairs bathroom with shower over bath, pedestal wash hand basin and w.c., great size lounge with feature fireplace and a HUGE open plan living family dining kitchen with Velux skylights, and plenty of space for the whole family to use. Within the kitchen area there is a great range of base, drawer and wall units and integrated appliances. The dining area offers plenty of space for a family dining suite and there is still space for a sofa/lounge area.

To the first floor, the property benefits from three bedrooms-two lovely size doubles and a good size single. The master bedroom has built in wardrobes.

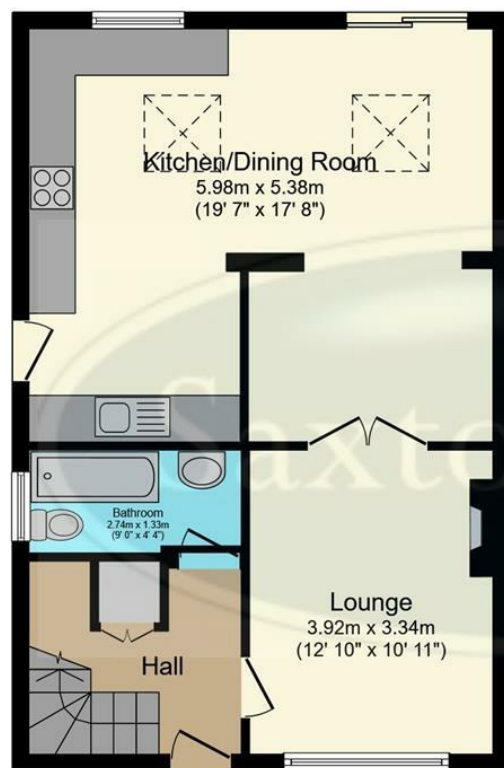
Externally the property has steps to the front door and a garden. A driveway to the side provides access to the rear garden where there is a tiered lawn garden with a variety of mature shrubs and trees.



- THREE BEDROOMS
- DOWNSTAIRS WC
- EXTENDED TO THE REAR TO PROVIDE A HUGE LIVING FAMILY DINING KITCHEN
- LOUNGE
- FRONT AND REAR GARDENS
- DRIVEWAY
- GREAT LOCATION
- EPC RATING: C
- COUNCIL TAX BAND: B
- TENURE: Freehold

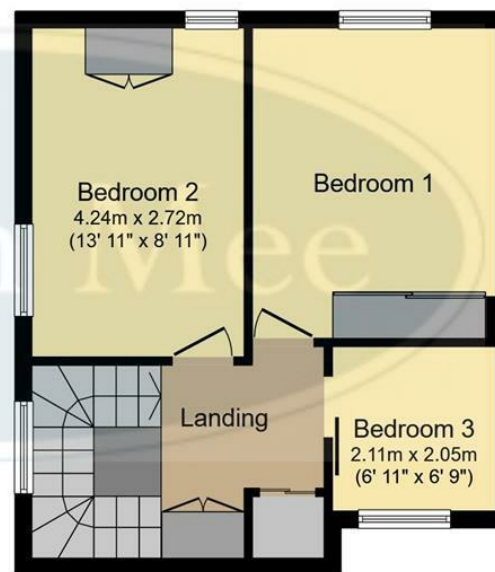






Ground Floor

Floor area 55.7 m² (600 sq.ft.)



First Floor

Floor area 39.5 m² (425 sq.ft.)

TOTAL: 95.2 m² (1,025 sq.ft.)

This floor plan is for illustrative purposes only. It is not drawn to scale. Any measurements, floor areas (including any total floor area), openings and orientations are approximate. No details are guaranteed, they cannot be relied upon for any purpose and do not form any part of any agreement. No liability is taken for any error, omission or misstatement. A party must rely upon its own inspection(s). Powered by www.Propertybox.io

While we endeavour to make our sales particulars fair, accurate and reliable, they are only a general guide to the property and, accordingly, if there is any point, which is of particular importance to you, please contact the relevant office. The Agents have not tested any apparatus, equipment, fittings or services and so cannot verify they are in working order. The buyer is advised to obtain verification. Please note all the measurement details are approximate and should not be relied upon as exact. All plans, floor plans and maps are for guidance purposes only and are not to scale. Under no circumstances should they be relied upon as exact or for use in planning carpets and other such fixtures, fittings or furnishings. YOUR HOME IS AT RISK IF YOU DO NOT KEEP UP REPAYMENTS ON A MORTGAGE OR OTHER LOAN SECURED ON IT. 'A Life Assurance policy may be requested.' 'Written Quotations of credit terms available on request.'

Banner Cross
T: 0114 268 3241
E: bannercross@saxtonmee.co.uk
www.saxtonmee.co.uk

Hathersage
T: 01433 650009
E: hathersage@saxtonmee.co.uk

Bakewell
T: 01629 815307
E: bakewell@saxtonmee.co.uk

Matlock
T: 01629 828250
E: matlock@saxtonmee.co.uk

