



10 Thorne Road, Nether Edge, Sheffield, S7 1RG

Saxton Mee

10 Thorne Road

Nether Edge

Guide Price

£300,000

GUIDE PRICE: £300,000-£325,000

Situated in the highly regarded area of Nether Edge, this three-bedroom semi-detached property offers a fantastic opportunity for buyers looking to modernise and add their own style. With no onward chain, it's an ideal prospect for those keen to take on a project with plenty of potential.

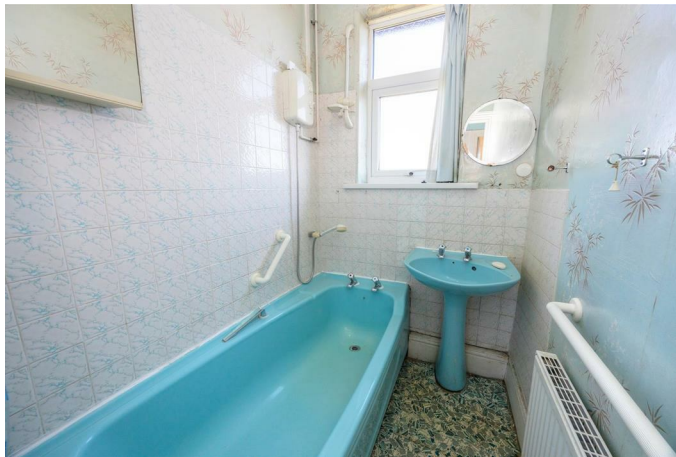
The accommodation is well-proportioned and includes a bay-fronted lounge, separate dining room, and a kitchen on the ground floor. Upstairs, there are three bedrooms, a family bathroom with bath, WC, and wash basin, as well as a separate WC and wash basin for added convenience.

Outside, the property enjoys a lovely, level rear garden—mainly laid to lawn and bordered by well-stocked flower beds—providing a quiet and attractive outdoor space. A private driveway also offers useful off-street parking.

Ideally located close to local amenities, schools, and excellent transport links, this home combines potential, space, and a great location—making it a brilliant opportunity for first-time buyers, families, or investors alike.

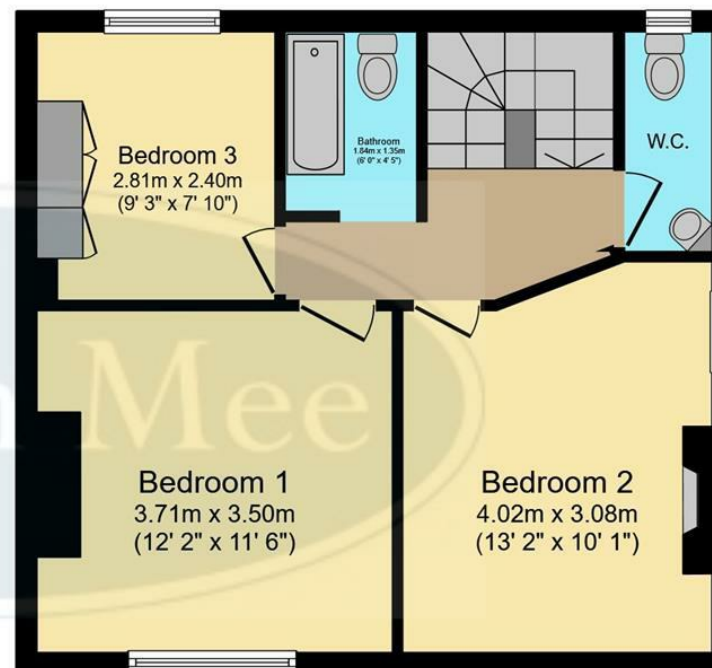
- Excellent Location close to Amenities, Local schools and Transport Links
- Offered for Sale with No Onward Chain
- In Need of Modernisation and full of Potential
- Driveway for Off-Street Parking
- Beautiful Garden to the Rear with Lawn Area and Flower Borders
- Ample Storage throughout
- Bay Fronted Lounge, separate Dining room and Kitchen to the Ground Floor
- Three Bedrooms, a Family Bathroom and Second Convenient WC
- EPC TBC







Ground Floor
Floor area 45.0 sq.m. (484 sq.ft.)



First Floor
Floor area 43.9 sq.m. (472 sq.ft.)

Total floor area: 88.9 sq.m. (956 sq.ft.)

This floor plan is for illustrative purposes only. It is not drawn to scale. Any measurements, floor areas (including any total floor area), openings and orientations are approximate. No details are guaranteed, they cannot be relied upon for any purpose and do not form any part of any agreement. No liability is taken for any error, omission or misstatement. A party must rely upon its own inspection(s). Powered by www.Propertybox.io

While we endeavour to make our sales particulars fair, accurate and reliable, they are only a general guide to the property and, accordingly, if there is any point, which is of particular importance to you, please contact the relevant office. The Agents have not tested any apparatus, equipment, fittings or services and so cannot verify they are in working order. The buyer is advised to obtain verification. Please note all the measurement details are approximate and should not be relied upon as exact. All plans, floor plans and maps are for guidance purposes only and are not to scale. Under no circumstances should they be relied upon as exact or for use in planning carpets and other such fixtures, fittings or furnishings. YOUR HOME IS AT RISK IF YOU DO NOT KEEP UP REPAYMENTS ON A MORTGAGE OR OTHER LOAN SECURED ON IT. 'A Life Assurance policy may be requested.' 'Written Quotations of credit terms available on request.'

Banner Cross
T: 0114 268 3241
E: bannercross@saxtonmee.co.uk
www.saxtonmee.co.uk

Hathersage
T: 01433 650009
E: hathersage@saxtonmee.co.uk

Bakewell
T: 01629 815307
E: bakewell@saxtonmee.co.uk

Matlock
T: 01629 828250
E: matlock@saxtonmee.co.uk

