



29b Binfield Road, Meersbrook, Sheffield, S8 9FA

Saxton Mee

29b Binfield Road

Meersbrook

Offers Around

£100,000

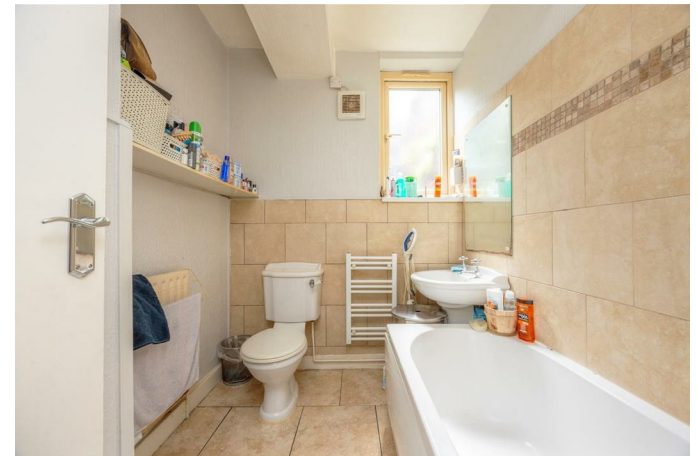
**** INVESTMENT OPPORTUNITY ****

For sale with NO CHAIN is this two bedroom, ground floor apartment forming part of this converted end Victorian terrace.

The property is located in a sought after position, within walking distance of Meersbrook Park, shopping facilities on Chesterfield Road and excellent public transport links.

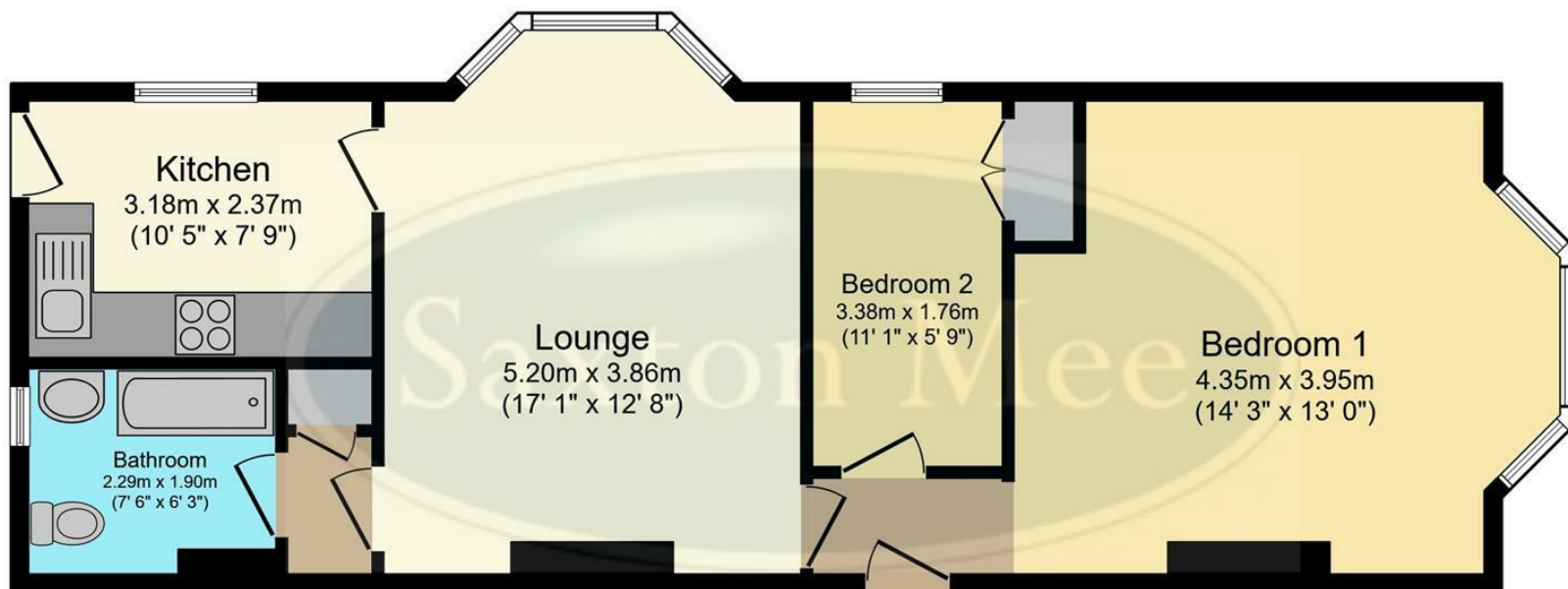
Briefly, the accommodation comprises: Kitchen to the rear fitted with a range of base and wall unit, space for a cooker, washing machine and fridge/freezer. A good sized living room with side facing bay window. Inner lobby with airing cupboard. Modern family bathroom with bath with electric shower over, wash basin and W.C. Bedroom one to the front with bay window. Double bedroom two with in-built cupboard.

Outside there is a courtyard area ideal for sitting out and a useful bin store.



- Two Good Bedrooms
- Ideal Investment Opportunity
- No Chain
- Excellent Location Close To Meersbrook Park
- A Wealth Of Amenities Nearby
- Regular Transport Links
- EPC Rating:
- Council Tax: Band A
- Tenure: Leasehold
- Viewing Via Banner Cross Office





Floor Plan
Floor area 61.6 m² (663 sq.ft.)

TOTAL: 61.6 m² (663 sq.ft.)

This floor plan is for illustrative purposes only. It is not drawn to scale. Any measurements, floor areas (including any total floor area), openings and orientations are approximate. No details are guaranteed, they cannot be relied upon for any purpose and do not form any part of any agreement. No liability is taken for any error, omission or misstatement. A party must rely upon its own inspection(s). Powered by www.Propertybox.io

While we endeavour to make our sales particulars fair, accurate and reliable, they are only a general guide to the property and, accordingly, if there is any point, which is of particular importance to you, please contact the relevant office. The Agents have not tested any apparatus, equipment, fittings or services and so cannot verify they are in working order. The buyer is advised to obtain verification. Please note all the measurement details are approximate and should not be relied upon as exact. All plans, floor plans and maps are for guidance purposes only and are not to scale. Under no circumstances should they be relied upon as exact or for use in planning carpets and other such fixtures, fittings or furnishings. YOUR HOME IS AT RISK IF YOU DO NOT KEEP UP REPAYMENTS ON A MORTGAGE OR OTHER LOAN SECURED ON IT. 'A Life Assurance policy may be requested.' 'Written Quotations of credit terms available on request.'

Banner Cross
T: 0114 268 3241
E: bannercross@saxtonmee.co.uk
www.saxtonmee.co.uk

Hathersage
T: 01433 650009
E: hathersage@saxtonmee.co.uk

Bakewell
T: 01629 815307
E: bakewell@saxtonmee.co.uk

Matlock
T: 01629 828250
E: matlock@saxtonmee.co.uk

