



1 Broomcroft Park, Whirlow, Sheffield, S11 9NZ

Saxton Mee

1 Broomcroft Park

Whirlow

Offers Around

£1,075,000

Delightfully situated in this small, exclusive development on this quiet and leafy backwater in the heart of Whirlow a very well-proportioned five Bedroom, two Bathroom, detached, executive family home on a good plot.

Strikingly attractive in stone and with stone mullion windows, the accommodation comprising; broad Reception Hall, Cloakroom, large Sitting room with French windows to rear, separate Family room, Breakfast Kitchen with a range of built in appliances and adjacent dining area, Utility room, integral double Garage. On the first floor; stunning galleried Landing, large Master Bedroom with ensuite dressing room and ensuite shower room, four further double Bedrooms and family Bathroom with full suite and separate shower.

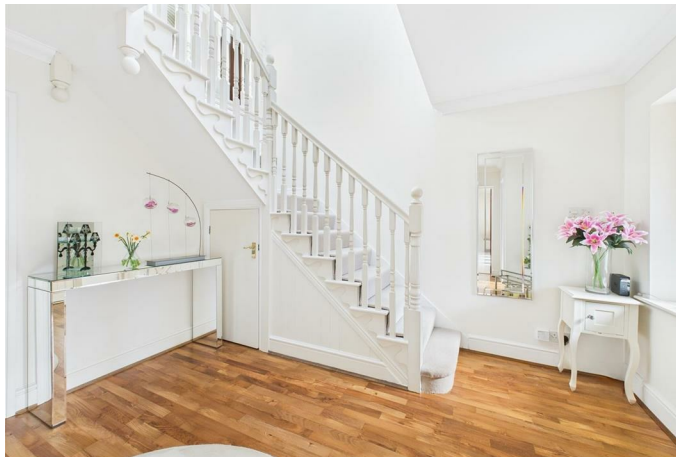
Outside; double width Driveway giving access to the integral double Garage, attractive landscaped front garden, and to the rear and side a well-stocked and maintained walled garden with entertaining terrace.

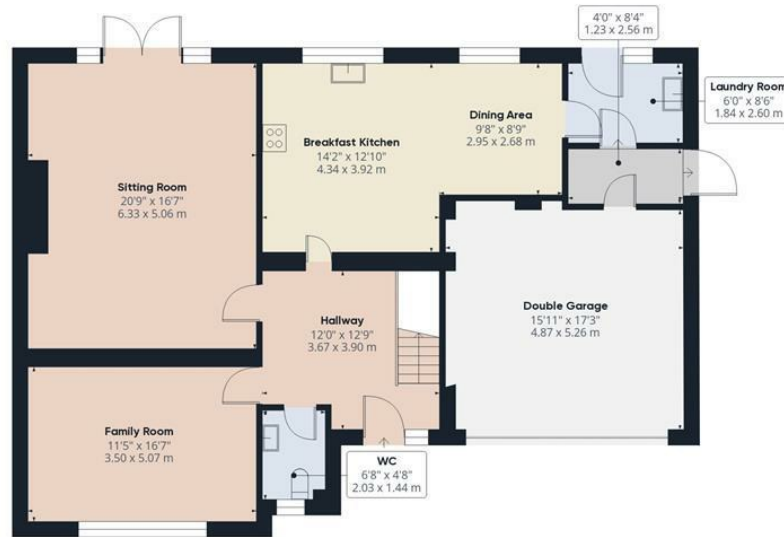
Whirlow is an exclusive suburb of Sheffield with first class schools being in catchment for Silverdale and Dobcroft, local sports club at Abbeydale and nearby golf and tennis. Within walking distance of Whirlow Farm and open countryside of the Peak District.



- Attractive Stone Built Substantial Family Home
- Five Bedrooms, Two Bathrooms
- Small Exclusive Cul-de-sac and Lovely Plot
- Stone Mullion Windows and Good Spec.
- Large Drawing Room and Separate Family Room
- Integral Double Garage
- Large Master Bedroom with Ensuite Dressing Room and Ensuite Shower Room
- Attractive Grounds and Adjoining Woodland
- Excellent Catchment Area for Schools
- Walking Distance of Nearby Sports Facilities and Peak District National Park







Ground Floor



Floor 1



Approximate total area⁽¹⁾

2571.82 ft²
238.93 m²

Reduced headroom

5.83 ft²
0.54 m²

(1) Excluding balconies and terraces

Reduced headroom

Below 5 ft/1.5 m

While every attempt has been made to ensure accuracy, all measurements are approximate, not to scale. This floor plan is for illustrative purposes only.

Calculations are based on RICS IPMS 3C standard.

GIRAFFE360

While we endeavour to make our sales particulars fair, accurate and reliable, they are only a general guide to the property and, accordingly, if there is any point, which is of particular importance to you, please contact the relevant office. The Agents have not tested any apparatus, equipment, fittings or services and so cannot verify they are in working order. The buyer is advised to obtain verification. Please note all the measurement details are approximate and should not be relied upon as exact. All plans, floor plans and maps are for guidance purposes only and are not to scale. Under no circumstances should they be relied upon as exact or for use in planning carpets and other such fixtures, fittings or furnishings. YOUR HOME IS AT RISK IF YOU DO NOT KEEP UP REPAYMENTS ON A MORTGAGE OR OTHER LOAN SECURED ON IT. 'A Life Assurance policy may be requested.' 'Written Quotations of credit terms available on request.'

Banner Cross
T: 0114 268 3241
E: bannercross@saxtonmee.co.uk
www.saxtonmee.co.uk

Hathersage
T: 01433 650009
E: hathersage@saxtonmee.co.uk

Bakewell
T: 01629 815307
E: bakewell@saxtonmee.co.uk

Matlock
T: 01629 828250
E: matlock@saxtonmee.co.uk

