



Christchurch Cottage Townhead Road, Dore, Sheffield, S17 3GA

Saxton Mee

Christchurch Cottage

Dore

Offers Around

£895,000

A substantial, large five Bedroom, three Bathroom Freehold Detached family home situated in a great location in the heart of Dore within a very short walk of the centre of the village which has great amenities, including first class schools including Dore Primary and King Egberts secondary. Also equal distance of the beautiful open countryside of Blackmoor and the Peak District. The accommodation which has been extended and considerably improved by the current owners fully warrants an internal inspection.

Entrance Lobby, long Reception Hall with Amtico flooring, Cloakroom, bay windowed Dining room with feature Limestone fireplace, 'L' shaped Sitting room with Amtico flooring and French windows to rear terrace, very large living Kitchen with well fitted kitchen area and range of appliances, central dining island and family area, Utility room, access to large Garage. On the first floor; Master Bedroom with ensuite shower room, Bedroom suite two with ensuite shower room, two further double bedrooms and a further fifth bedroom currently used as a study, family Bathroom with full suite comprising Jacuzzi bath and separate shower cubicle.

Outside; electric entrance gate opens onto an extensive Driveway providing ample parking and giving access to the large integral Garage. To the rear; broad terrace area ideal for entertaining and attractive level landscape garden.



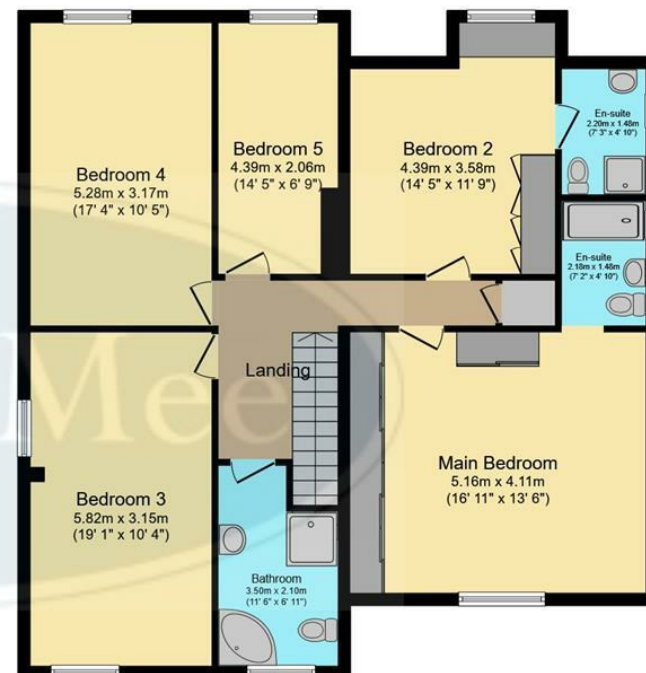
- Large Freehold Five Bedroom Detached Family Residence
- Great Road Close to the Centre of Dore Village
- Master Bedroom with Ensuite Shower Room, Further Bedroom with Ensuite Shower Room and Large Family Bathroom
- Very Large Living Kitchen with French Windows to Rear Terrace and Garden
- Extensive Offroad Parking, Electric Entrance Gate and Large Garage
- Attractive Easily Maintained Rear Garden with Large Entertaining Terrace, Lawn and Borders
- Great Location within less than 100m of Dore Village Centre and Equal Distance to Lovely Walks on Blackmoor and the Peak District
- Great Catchment for Schools including Dore Primary and King Egberts







Ground Floor
Floor area 137.6 sq.m. (1,481 sq.ft.)



First Floor
Floor area 110.4 sq.m. (1,188 sq.ft.)

Total floor area: 247.9 sq.m. (2,669 sq.ft.)

This floor plan is for illustrative purposes only. It is not drawn to scale. Any measurements, floor areas (including any total floor area), openings and orientations are approximate. No details are guaranteed, they cannot be relied upon for any purpose and do not form any part of any agreement. No liability is taken for any error, omission or misstatement. A party must rely upon its own inspection(s). Powered by www.Propertybox.io

While we endeavour to make our sales particulars fair, accurate and reliable, they are only a general guide to the property and, accordingly, if there is any point, which is of particular importance to you, please contact the relevant office. The Agents have not tested any apparatus, equipment, fittings or services and so cannot verify they are in working order. The buyer is advised to obtain verification. Please note all the measurement details are approximate and should not be relied upon as exact. All plans, floor plans and maps are for guidance purposes only and are not to scale. Under no circumstances should they be relied upon as exact or for use in planning carpets and other such fixtures, fittings or furnishings. YOUR HOME IS AT RISK IF YOU DO NOT KEEP UP REPAYMENTS ON A MORTGAGE OR OTHER LOAN SECURED ON IT. 'A Life Assurance policy may be requested.' 'Written Quotations of credit terms available on request.'

Banner Cross
T: 0114 268 3241
E: bannercross@saxtonmee.co.uk
www.saxtonmee.co.uk

Hathersage
T: 01433 650009
E: hathersage@saxtonmee.co.uk

Bakewell
T: 01629 815307
E: bakewell@saxtonmee.co.uk

Matlock
T: 01629 828250
E: matlock@saxtonmee.co.uk

