



1 Mayfield Heights, Brookhouse Hill, Fulwood, Sheffield, S10 3TT

Saxton Mee

1 Mayfield Heights, Fulwood

Guide Price

£500,000

GUIDE PRICE £500,000-£525,000

Delightfully situated in a prime position in this prestigious development within walking distance of Fulwood village and taking full advantage of the magnificent uninterrupted south facing views over the Mayfield Valley to Ringinglow. This fabulous family home has an abundance of space and offers light and airy accommodation with windows thoughtfully placed to take advantage of the magnificent setting.

This lovely family home briefly comprises;

Entrance lobby with downstairs w.c. open plan living dining space with feature fireplace and open plan kitchen fitted with a range of base, drawer and wall units with integrated appliances. There is also an open plan sunroom offering a cosy space to take advantage of the views.

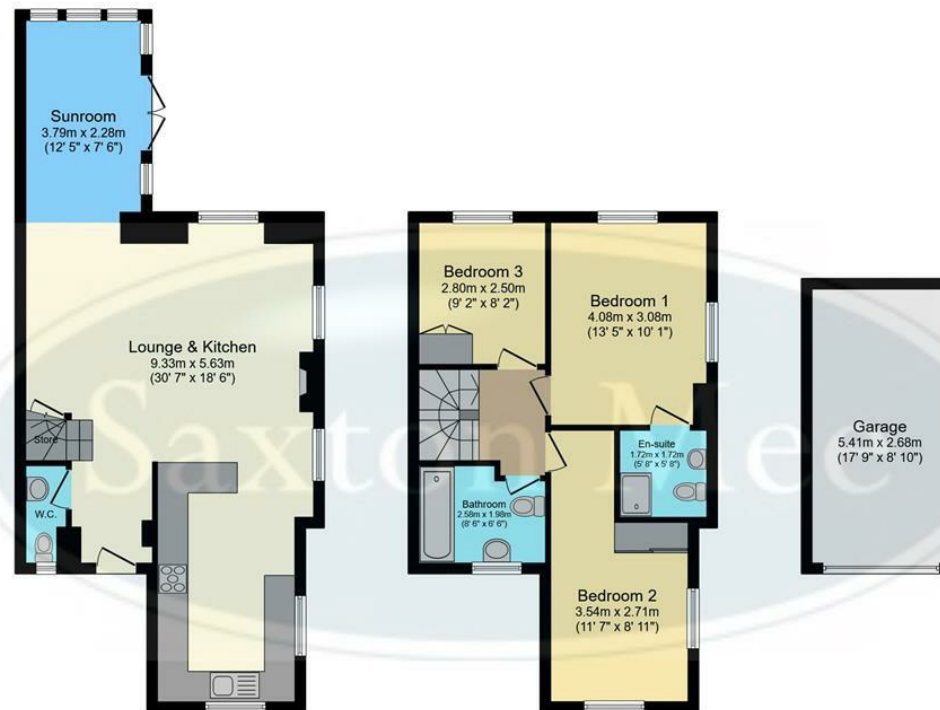
To the first floor the property has a master bedroom with en suite shower room, a second double bedroom and a good size bedroom three. The family bathroom is furnished with a bath, pedestal wash hand basin and low flush w.c.

To the front and side of the property there are planted areas. A single garage offers additional storage or parking. To the rear of the property is a courtyard garden ideal for sitting out with a glass of wine to take in the magnificent view while the sun goes down. Private development with extensive communal gardens.



- STUNNING VIEWS TO THE REAR
- BEAUTIFULLY PRESENTED THROUGHOUT WITH LIGHT AND AIRY SPACES
- OPEN PLAN MODERN LIVING
- MODERN FITTED DINING KITCHEN
- OPEN PLAN LIVING SPACE WITH A SUNROOM
- COURTYARD GARDEN WITH STUNNING VIEWS OVER THE VALLEY
- SINGLE GARAGE
- EPC AWAITED
- COUNCIL TAX BAND: E
- VIEWINGS VIA BANNER CROSS BRANCH





Ground Floor
 Floor area 54.4 sq.m.
 (585 sq.ft.)

First Floor
 Floor area 45.3 sq.m.
 (487 sq.ft.)

Garage
 Floor area 14.5 sq.m.
 (156 sq.ft.)

TOTAL: 114.1 sq.m. (1,229 sq.ft.)

This floor plan is for illustrative purposes only. It is not drawn to scale. Any measurements, floor areas (including any total floor area), openings and orientations are approximate. No details are guaranteed, they cannot be relied upon for any purpose and do not form any part of any agreement. No liability is taken for any error, omission or misstatement. A party must rely upon its own inspection(s). Powered by www.Propertybox.io

While we endeavour to make our sales particulars fair, accurate and reliable, they are only a general guide to the property and, accordingly, if there is any point, which is of particular importance to you, please contact the relevant office. The Agents have not tested any apparatus, equipment, fittings or services and so cannot verify they are in working order. The buyer is advised to obtain verification. Please note all the measurement details are approximate and should not be relied upon as exact. All plans, floor plans and maps are for guidance purposes only and are not to scale. Under no circumstances should they be relied upon as exact or for use in planning carpets and other such fixtures, fittings or furnishings. YOUR HOME IS AT RISK IF YOU DO NOT KEEP UP REPAYMENTS ON A MORTGAGE OR OTHER LOAN SECURED ON IT. 'A Life Assurance policy may be requested.' 'Written Quotations of credit terms available on request.'

Banner Cross
 T: 0114 268 3241
 E: bannercross@saxtonmee.co.uk
www.saxtonmee.co.uk

Hathersage
 T: 01433 650009
 E: hathersage@saxtonmee.co.uk

Bakewell
 T: 01629 815307
 E: bakewell@saxtonmee.co.uk

Matlock
 T: 01629 828250
 E: matlock@saxtonmee.co.uk

