



54 Carter Knowle Avenue, Carterknowle, Sheffield, S11 9FU

Saxton Mee

54 Carter Knowle Avenue

Carterknowle

Offers Over

£550,000

Nestled in the sought-after area of Carter Knowle, known for its desirable schools, excellent amenities, and green spaces, this exceptional three-bedroom detached property is a true gem, flooded with natural light through its large windows.

The home begins with a driveway leading to a garage, offering ample off-road parking. Upon entering, a spacious entrance hall provides access to a downstairs toilet and the dining room at the front of the property, where a large window overlooks the front garden.

To the rear, a spectacular open-plan living space combines a generous living area with a modern kitchen and dining area. A lantern window in the extension ensures natural light floods the room, while downlighting adds elegance. The kitchen is fitted with integrated appliances including ceramic hob, electric oven plus further combi oven/microwave, dishwasher, large fridge and separate 3 drawer freezer plus instant boiling water tap. Doors from the bright extended living room open onto the patio, featuring stylish glass balustrades.

Adjacent to the kitchen is a study room, perfect for a quiet workspace, and access to the garage, which includes a utility area.

Upstairs, the property boasts three well-proportioned bedrooms, offering ample space and comfort.

To the rear is a beautifully landscaped, low-maintenance slate patio with tiered garden areas, perfect for outdoor entertaining while enjoying the stunning views. Several seating areas throughout the garden make the most of the natural surroundings, while a charming water feature adds a tranquil touch.

Further enhancing the garden is a spacious garden office or wooden storage room, ideal for a home office or additional storage.

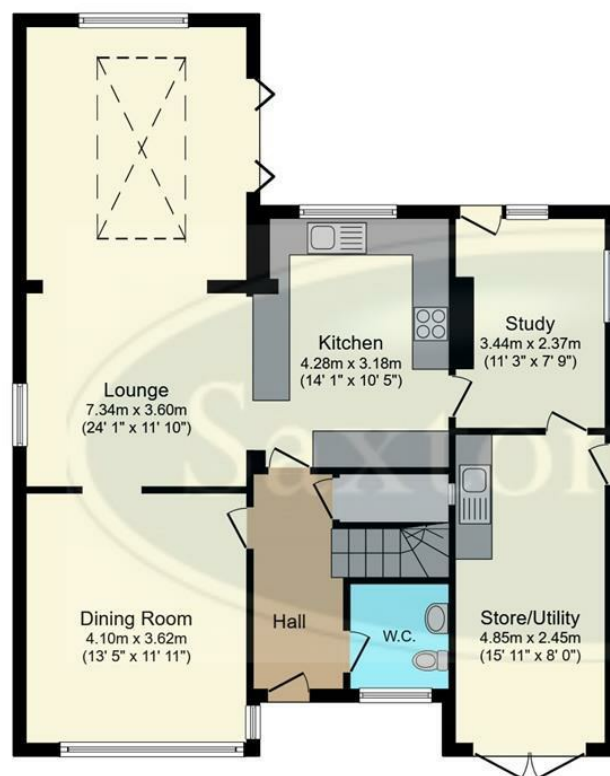
This property can only be fully appreciated through an internal viewing, where you'll be impressed by the combination of space, light, and design. Don't miss the opportunity to make this house your home.



- Detached Three Bedroom Home In Sought-After Area Of Carter Knowle
- Bright And Spacious With Large Windows Filling Every Room With Natural Light
- Modern Kitchen Including Integrated Neff and Siemens Appliances And Breakfast Bar
- Study Room Ideal For Working From Home
- Garage And Utility Area – Extra Storage And Laundry Space
- Two Bathrooms – Includes A Downstairs Toilet And A Family Bathroom
- Private Off-Road Parking On Driveway
- Landscaped Garden With Views Towards Brincliffe
- Close To Highly Regarded Schools
- Freehold







Ground Floor

Floor area 90.0 sq.m. (969 sq.ft.)



First Floor

Floor area 45.0 sq.m. (485 sq.ft.)

TOTAL: 135.0 sq.m. (1,453 sq.ft.)

This floor plan is for illustrative purposes only. It is not drawn to scale. Any measurements, floor areas (including any total floor area), openings and orientations are approximate. No details are guaranteed, they cannot be relied upon for any purpose and do not form any part of any agreement. No liability is taken for any error, omission or misstatement. A party must rely upon its own inspection(s). Powered by www.Propertybox.io

While we endeavour to make our sales particulars fair, accurate and reliable, they are only a general guide to the property and, accordingly, if there is any point, which is of particular importance to you, please contact the relevant office. The Agents have not tested any apparatus, equipment, fittings or services and so cannot verify they are in working order. The buyer is advised to obtain verification. Please note all the measurement details are approximate and should not be relied upon as exact. All plans, floor plans and maps are for guidance purposes only and are not to scale. Under no circumstances should they be relied upon as exact or for use in planning carpets and other such fixtures, fittings or furnishings. YOUR HOME IS AT RISK IF YOU DO NOT KEEP UP REPAYMENTS ON A MORTGAGE OR OTHER LOAN SECURED ON IT. 'A Life Assurance policy may be requested.' 'Written Quotations of credit terms available on request.'

Banner Cross
T: 0114 268 3241
E: bannercross@saxtonmee.co.uk
www.saxtonmee.co.uk

Hathersage
T: 01433 650009
E: hathersage@saxtonmee.co.uk

Bakewell
T: 01629 815307
E: bakewell@saxtonmee.co.uk

Matlock
T: 01629 828250
E: matlock@saxtonmee.co.uk

