



Apt 32 Victoria Court, Lyndhurst Road, Brincliffe, Sheffield, S11 9DR

Saxton Mee



# Apt 32 Victoria Court

## Lyndhurst Road

Guide Price

# £250,000

Guide Price £250,000 to £270,000

Nestled in the historic heart of this beautifully converted Victorian former hospital, this delightful two-bedroom ground floor apartment offers a unique blend of character and modern convenience. Boasting high ceilings and generous living spaces, the property is set within a highly sought-after development featuring attractive communal grounds and exclusive access to on-site swimming pool and gym facilities.

The accommodation comprises a welcoming reception hall, an impressive open-plan lounge and dining area that seamlessly flows into a well-appointed kitchen. There are two spacious double bedrooms, one of which benefits from built-in wardrobes, and a stylish bathroom with a full suite.

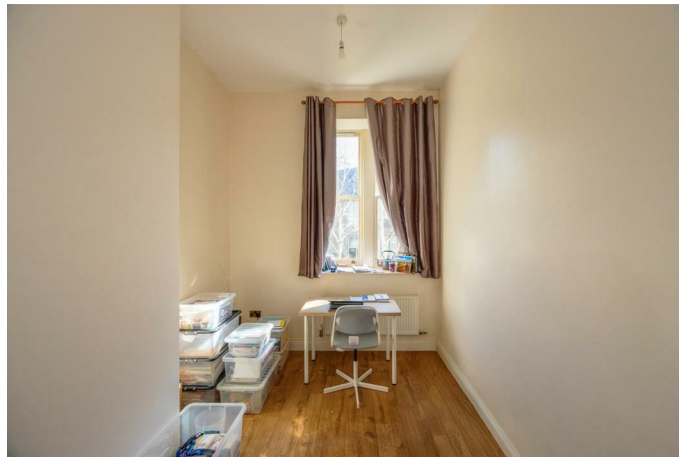
Externally, the development offers secure gated parking alongside additional visitor parking, all within a peaceful and well-maintained setting. Ideally positioned for excellent local amenities, picturesque parks, and easy access to open countryside, this property presents an exceptional opportunity for those seeking both charm and convenience.



- Charming And Spacious Two Bedroom Ground Floor Apartment
- Located In The Historic Part Of A Beautifully Converted Victorian Former Hospital
- High Ceilings And Generous Living Spaces
- Sought-After Development With Attractive Communal Grounds
- Secure Gated Parking Plus Visitor Parking
- Well-Placed For Excellent Local Amenities, Parks, And Open Countryside
- Offered For Sale With No Onward Chain
- Open-Plan Lounge And Dining Area Leading To A Well-Appointed Kitchen
- Exclusive Access To On-Site Swimming Pool And Gym Facilities
- Leasehold 200 years from 29th September 2001











## Floor Plan

Floor area 67.3 m<sup>2</sup> (725 sq.ft.)

**TOTAL: 67.3 m<sup>2</sup> (725 sq.ft.)**

This floor plan is for illustrative purposes only. It is not drawn to scale. Any measurements, floor areas (including any total floor area), openings and orientations are approximate. No details are guaranteed, they cannot be relied upon for any purpose and do not form any part of any agreement. No liability is taken for any error, omission or misstatement. A party must rely upon its own inspection(s). Powered by [www.Propertybox.io](http://www.Propertybox.io)

While we endeavour to make our sales particulars fair, accurate and reliable, they are only a general guide to the property and, accordingly, if there is any point, which is of particular importance to you, please contact the relevant office. The Agents have not tested any apparatus, equipment, fittings or services and so cannot verify they are in working order. The buyer is advised to obtain verification. Please note all the measurement details are approximate and should not be relied upon as exact. All plans, floor plans and maps are for guidance purposes only and are not to scale. Under no circumstances should they be relied upon as exact or for use in planning carpets and other such fixtures, fittings or furnishings. YOUR HOME IS AT RISK IF YOU DO NOT KEEP UP REPAYMENTS ON A MORTGAGE OR OTHER LOAN SECURED ON IT. 'A Life Assurance policy may be requested.' 'Written Quotations of credit terms available on request.'

Banner Cross  
T: 0114 268 3241  
E: [bannercross@saxtonmee.co.uk](mailto:bannercross@saxtonmee.co.uk)  
[www.saxtonmee.co.uk](http://www.saxtonmee.co.uk)

Hathersage  
T: 01433 650009  
E: [hathersage@saxtonmee.co.uk](mailto:hathersage@saxtonmee.co.uk)

Bakewell  
T: 01629 815307  
E: [bakewell@saxtonmee.co.uk](mailto:bakewell@saxtonmee.co.uk)

Matlock  
T: 01629 828250  
E: [matlock@saxtonmee.co.uk](mailto:matlock@saxtonmee.co.uk)

**Saxton Mee**