



1 Pickard Drive, Richmond, Sheffield, S13 8EW

Saxton Mee

1 Pickard Drive

Richmond

Asking Price

£400,000

Beautifully Presented Four Bedroom Detached Family Home

A superbly appointed four-bedroom, three-bathroom detached family home, situated on a generous corner plot in this ever-popular area. Offering excellent access to Sheffield City Centre, Sheffield Parkway, and the M1 motorway, this property is perfect for commuters and families alike.

Occupying a wonderful corner plot, this beautifully presented detached family home offers spacious and flexible living accommodation, ideal for a growing family.

The ground floor comprises a welcoming reception hall, cloakroom/WC, a bright and airy living room with bay window and French doors opening onto the attractive rear garden, a separate dining room, and a good-sized breakfast kitchen with access to a practical utility room.

To the first floor, the master bedroom features an en-suite shower room. There are three further well-proportioned bedrooms and a modern family bathroom.

Outside the property boasts a double-width driveway and an attached double garage, providing ample off-road parking. The front garden is well maintained, while the rear and side offer a particularly spacious, private garden with lawn, patio areas, and a variety of mature shrubs and trees—perfect for outdoor entertaining or family relaxation.

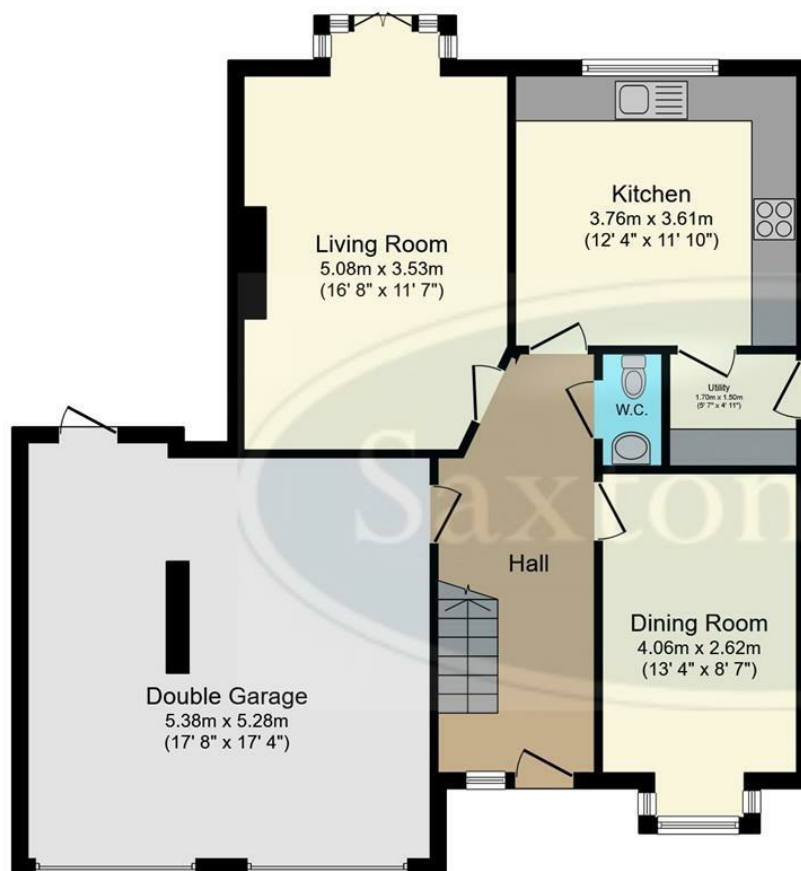
Situated in a highly desirable residential area with easy access to excellent local amenities, schools, and major transport links into Sheffield and beyond via Sheffield Parkway and the M1.



- Four Great Size Bedrooms
- Three Bathrooms
- Two Reception Room
- Modern Fitted Dining Kitchen
- Utility Room
- Double Garage And Double Width Driveway
- Much Larger Garden Than Average
- Council Tax Band D/EPC Rating C
- Freehold
- Viewings Via Banner Cross Branch







Ground Floor

Floor area 89.1 sq.m. (959 sq.ft.)



First Floor

Floor area 64.8 sq.m. (698 sq.ft.)

TOTAL: 153.9 sq.m. (1,657 sq.ft.)

This floor plan is for illustrative purposes only. It is not drawn to scale. Any measurements, floor areas (including any total floor area), openings and orientations are approximate. No details are guaranteed, they cannot be relied upon for any purpose and do not form any part of any agreement. No liability is taken for any error, omission or misstatement. A party must rely upon its own inspection(s). Powered by www.Propertybox.io

While we endeavour to make our sales particulars fair, accurate and reliable, they are only a general guide to the property and, accordingly, if there is any point, which is of particular importance to you, please contact the relevant office. The Agents have not tested any apparatus, equipment, fittings or services and so cannot verify they are in working order. The buyer is advised to obtain verification. Please note all the measurement details are approximate and should not be relied upon as exact. All plans, floor plans and maps are for guidance purposes only and are not to scale. Under no circumstances should they be relied upon as exact or for use in planning carpets and other such fixtures, fittings or furnishings. YOUR HOME IS AT RISK IF YOU DO NOT KEEP UP REPAYMENTS ON A MORTGAGE OR OTHER LOAN SECURED ON IT. 'A Life Assurance policy may be requested.' 'Written Quotations of credit terms available on request.'

Banner Cross
T: 0114 268 3241
E: bannercross@saxtonmee.co.uk
www.saxtonmee.co.uk

Hathersage
T: 01433 650009
E: hathersage@saxtonmee.co.uk

Bakewell
T: 01629 815307
E: bakewell@saxtonmee.co.uk

Matlock
T: 01629 828250
E: matlock@saxtonmee.co.uk

