



Ground Floor Apartment, Rustlings House 205A Rustlings Road, Endcliffe

Saxton Mee

Rustlings House 205A

Endcliffe Park

Offers Around

£375,000

In a stunning position, a rare opportunity to purchase a large two double bedroom apartment in this strikingly attractive detached Victorian house at the end of Rustlings Road, overlooking Endcliffe Park and to the rear backing onto Bingham Park. Offered for sale with immediate vacant possession and no chain.

The property retains some lovely original features and has the benefit of having the delightful garden to front, side and rear.

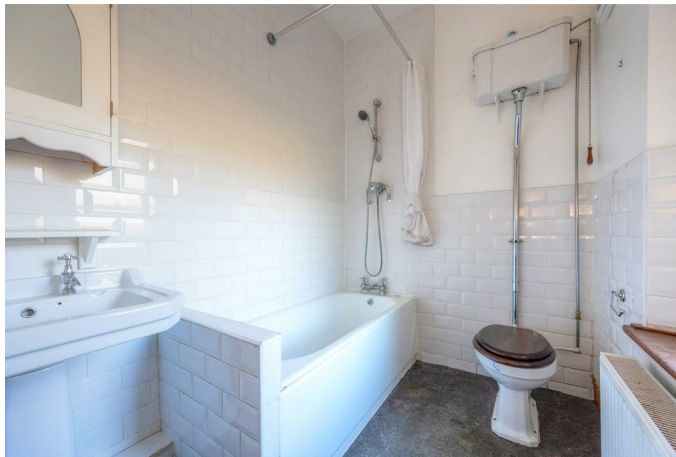
Large reception hall, bay windowed sitting room with feature marble fireplace and magnificent plasterwork to the ceiling and walls and strip pine flooring, two double bedrooms and family bathroom. Good sized dining room with feature fireplace, kitchen with custom range of units and granite work surfaces. Basement useful storage cellar. Outside: front and side garden and to the rear, large terrace and lovely south facing well maintained garden backing onto Bingham Park. Original old wash house.

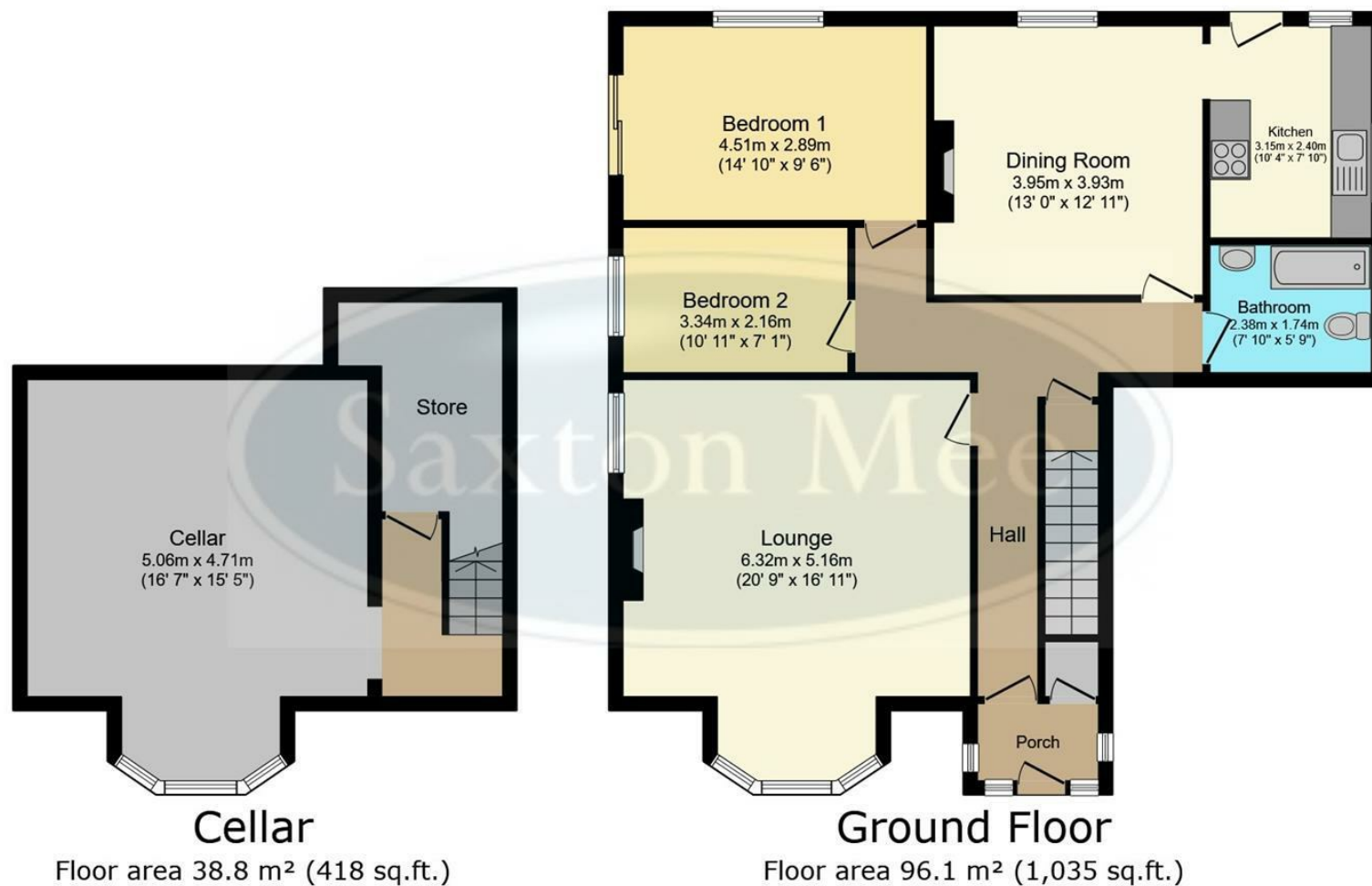
Endcliffe Park is well placed for excellent nearby shops on Ecclesall Road and Nether Green, superb local walks and sports clubs, nearby restaurants and other excellent amenities.



- Stunning Position in Converted Detached Victorian Residence
- Large Two Bedroom Ground Floor Apartment
- Retaining Some Lovely Original Features
- Vacant Possession and No Chain
- Large Bay Windowed Sitting Room with Views over the Park & Separate Dining Room
- Owning all the Garden to Front and Side and South Facing to Rear
- Great Views over Endcliffe Park and Bingham Park
- Well Placed for Excellent Amenities
- EPC Rating TBC
- Viewing: Banner Cross Office







This floor plan is for illustrative purposes only. It is not drawn to scale. Any measurements, floor areas (including any total floor area), openings and orientations are approximate. No details are guaranteed, they cannot be relied upon for any purpose and do not form any part of any agreement. No liability is taken for any error, omission or misstatement. A party must rely upon its own inspection(s). Powered by www.Propertybox.io

While we endeavour to make our sales particulars fair, accurate and reliable, they are only a general guide to the property and, accordingly, if there is any point, which is of particular importance to you, please contact the relevant office. The Agents have not tested any apparatus, equipment, fittings or services and so cannot verify they are in working order. The buyer is advised to obtain verification. Please note all the measurement details are approximate and should not be relied upon as exact. All plans, floor plans and maps are for guidance purposes only and are not to scale. Under no circumstances should they be relied upon as exact or for use in planning carpets and other such fixtures, fittings or furnishings. YOUR HOME IS AT RISK IF YOU DO NOT KEEP UP REPAYMENTS ON A MORTGAGE OR OTHER LOAN SECURED ON IT. 'A Life Assurance policy may be requested.' 'Written Quotations of credit terms available on request.'

Banner Cross
T: 0114 268 3241
E: bannercross@saxtonmee.co.uk
www.saxtonmee.co.uk

Hathersage
T: 01433 650009
E: hathersage@saxtonmee.co.uk

Bakewell
T: 01629 815307
E: bakewell@saxtonmee.co.uk

Matlock
T: 01629 828250
E: matlock@saxtonmee.co.uk

